

# PLAT OF SURVEY

by  
**R. C. WOLFGRAM**  
REGISTERED LAND SURVEYOR  
ST. PAUL, MINNESOTA

#9677

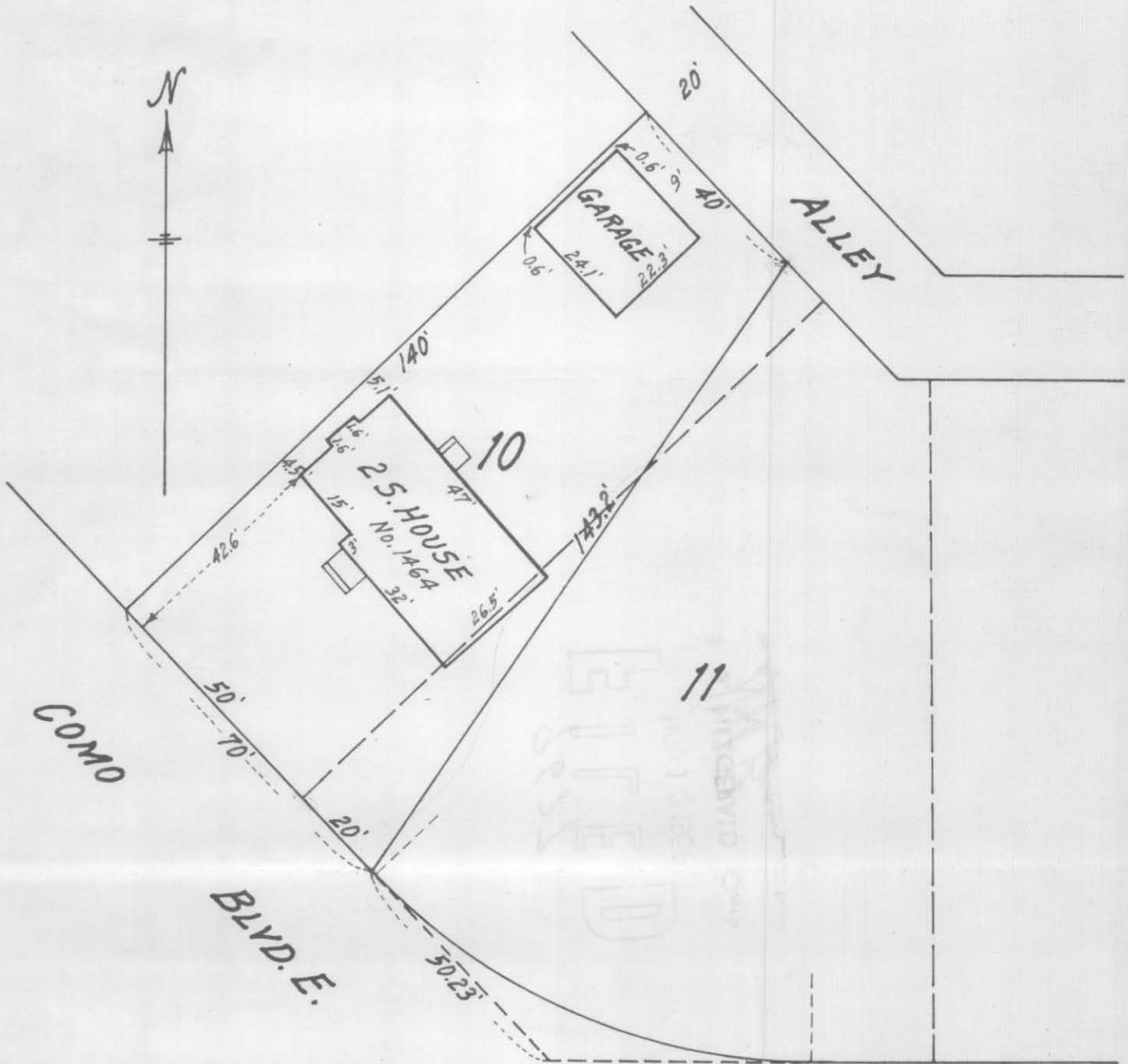
I hereby certify that this is a true and correct plat of a survey of the land shown and described hereon, and that any monuments or markers indicated hereon have been placed as shown, and that any improvements or physical conditions indicated hereon are as shown.

Surveyed Apr., 9, 1958.

*R. C. Wolfram*

Plat Scale - 1 in. = 30 ft.

Description - That part of Lots 10 and 11, Block 2, North Shore Addition lying Northwesterly of a line running from a point on extended Southwesterly line of and 20 feet Southeasterly from South corner of said Lot 10 to a point on Northeasterly line of and 10 feet Northwesterly from the East corner of said Lot 10.



W. ARLINGTON AVE.

#9677