

PLAT OF SURVEY

by
R. C. WOLFGRAM, REGISTERED LAND SURVEYOR
ST. PAUL, MINNESOTA

I hereby certify that this is a true and correct plat of a survey of the land shown and described hereon, and that any monuments or markers indicated hereon have been placed as shown, and that any improvements or physical conditions indicated hereon are as shown.

Surveyed *Nov., 25, 1955.*

R. C. Wolfram

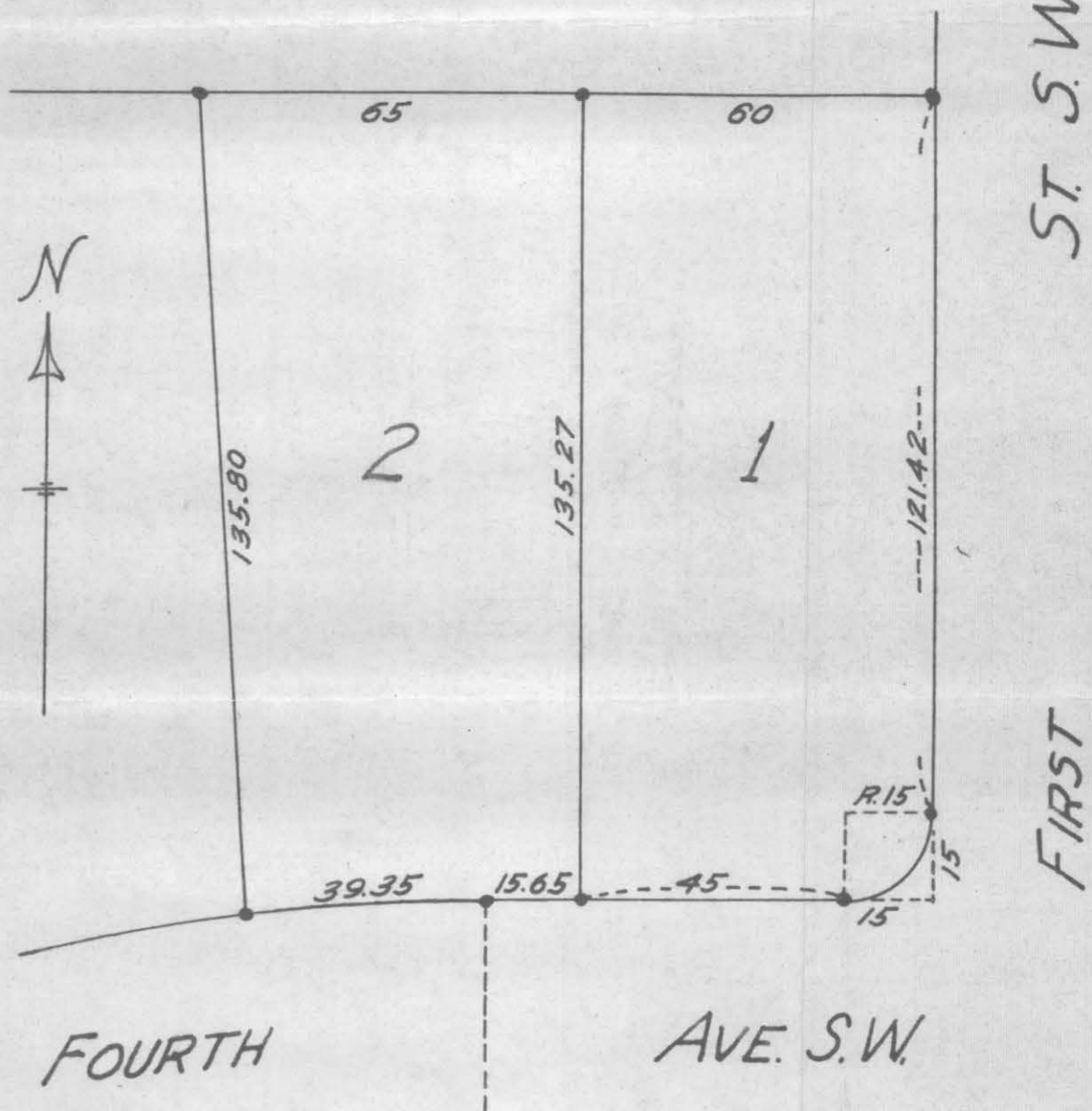
Plat Scale - 1 in = 30 ft. • Indicates Iron Mont.

Description - *Lots 1 and 2, Block 1, Country Club Heights.*

This is to certify that this is a true and correct plat of the land shown and described hereon as surveyed by me on November 25th, 1955.

St. Paul, Minnesota. August 9, 1958.

R. C. Wolfram
Registered Land Surveyor
Minn. Certif. No. 1340



#9667