

BOHN

BIGELOW

SYNDICATE

LOTA

SOLD TO BROWN & BIGELOW AFE 6771

9512

EXHIBIT "A"

ENGINEERING DEPARTMENT C. M. ST. P. & P. R. R. CO.

PLAT SHOWING spur track across southerly
 1 1/4 feet of Lot 3, Block 5, Midway Industrial
 Division

St. Paul Ramsey Minnesota
TOWN COUNTY STATE

SCALE 100 FEET PER INCH.

OFFICE OF DIVISION ENGINEER October 29, 1958.
MINNEAPOLIS, MINN. DATE

TCT-114

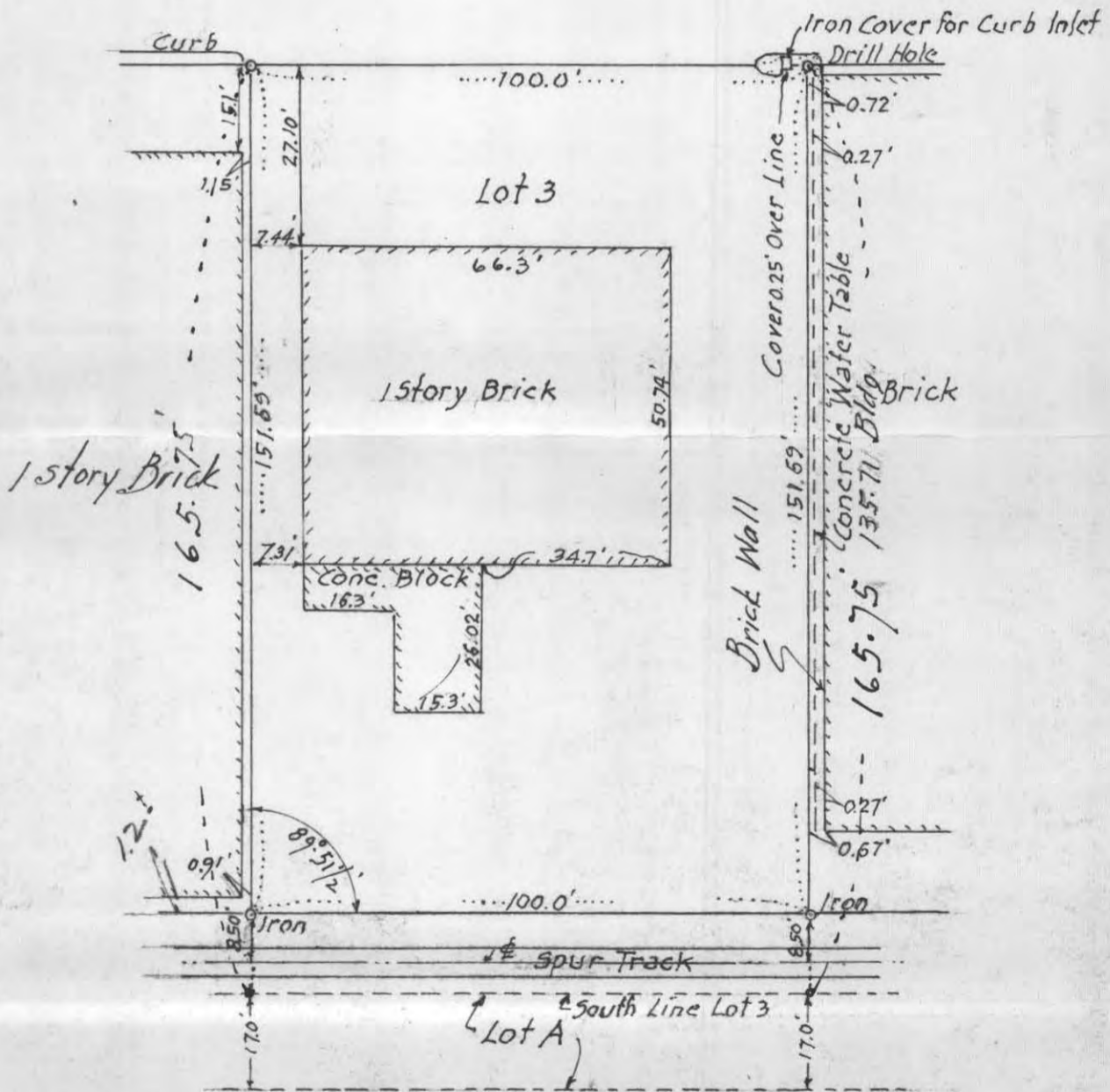
9512

CERTIFICATE of SURVEY

F. J. ARMSTRONG
Civil Engineer and Surveyor
ST. PAUL, MINN.



BOHN AVE.



Scale 1" = 30'

I HEREBY CERTIFY that on the 10th day of April, A. D. 1958

I made a survey of the following described property, to-wit: Lot 3, Block 5, Midway Industrial Division, St. Paul, Minn.

Subscribed and sworn to before me this

17 day of April, 1958

Genevieve Wolf
Notary Public.

My Commission Expires Feb 20, 1964

and the above map is a true and correct map of said survey and the improvements shown thereon are correctly indicated and there are no encroachments except as indicated

F. J. Armstrong Civil Engineer

9512