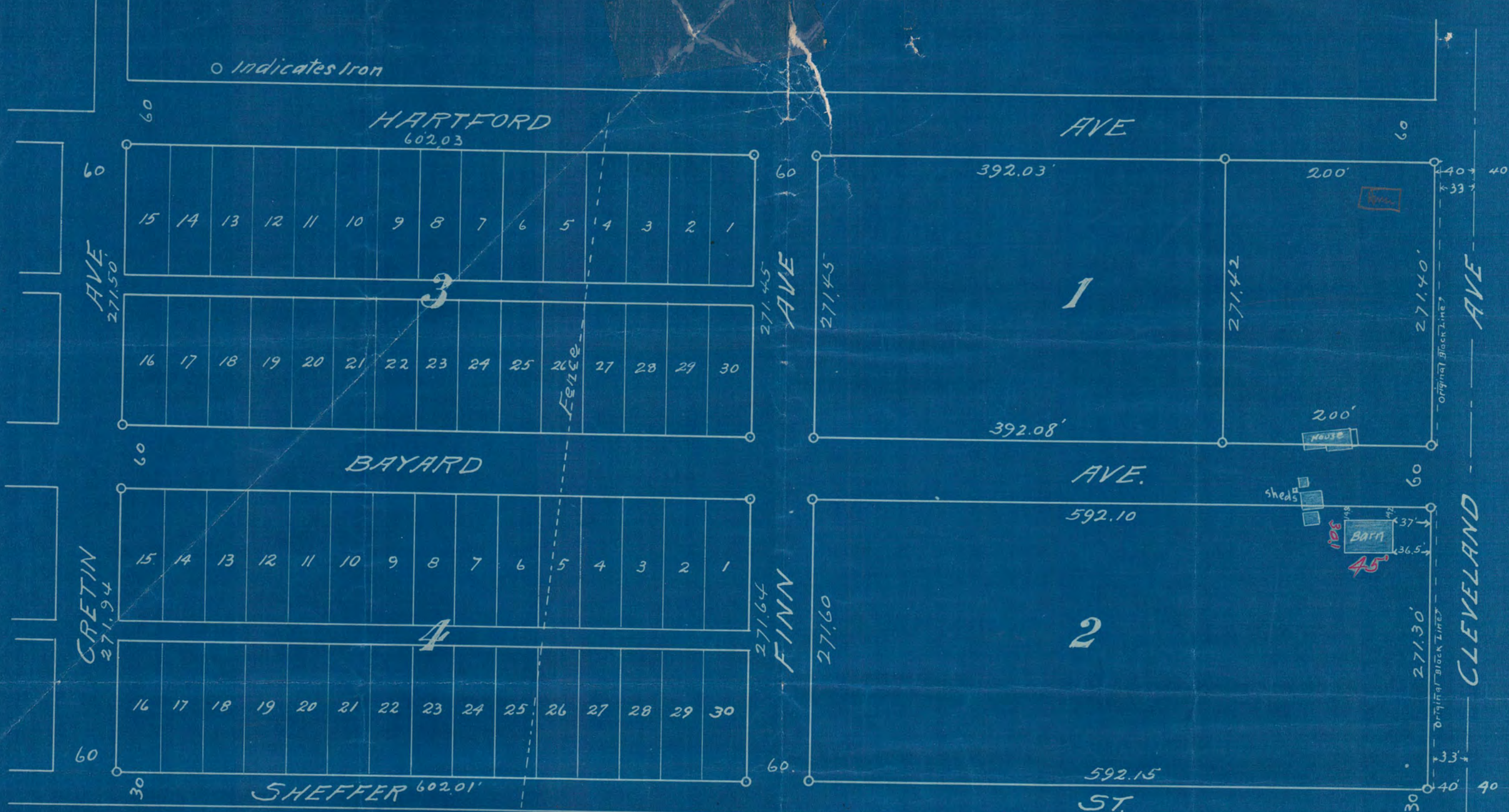


○ indicates Iron



St. Paul, Minn.
August 9, 1909.

We certify this diagram correctly represents Blocks 1-2-3 and 4 River Boulevard Addition, St. Paul, Minn. as surveyed by us in August 1909.

SURVEYED FOR
W.W. DUNN.

Fowble & Fitz
Civil Engineers & Surveyors.
ST. PAUL, MINN.

Scale: 100 Ft. Per Inch.

941