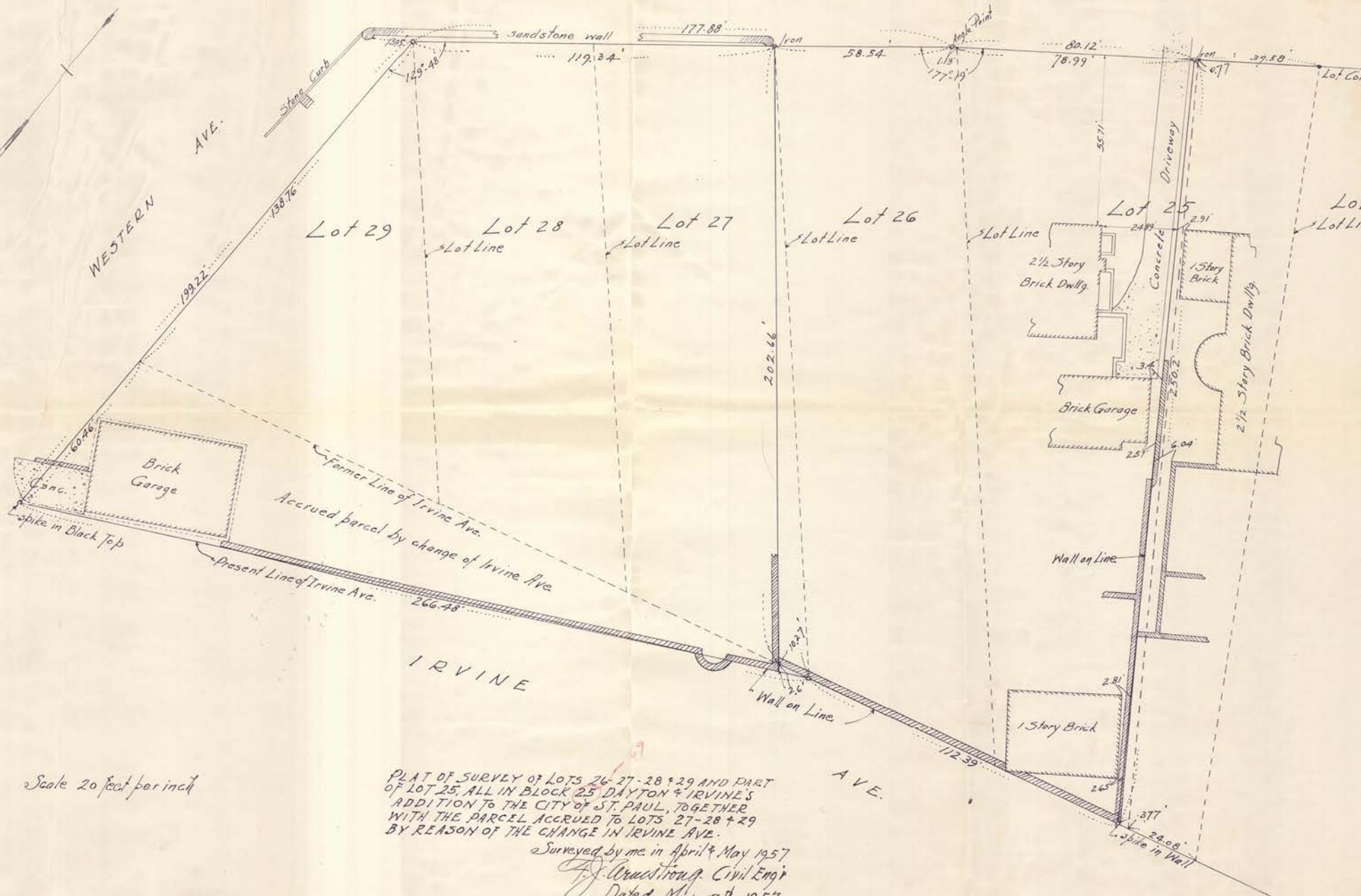


SUMMIT AVE.



WESTERN AVE.



Scale 20 feet per inch

PLAT OF SURVEY OF LOTS 26-27-28 & 29 AND PART OF LOT 25, ALL IN BLOCK 25 DAYTON & IRVINE'S ADDITION TO THE CITY OF ST. PAUL, TOGETHER WITH THE PARCEL ACCRUED TO LOTS 27-28 & 29 BY REASON OF THE CHANGE IN IRVINE AVE.

Surveyed by me in April & May 1957  
*J. J. Condit* Civil Eng'r  
 Dated May 17<sup>th</sup> 1957