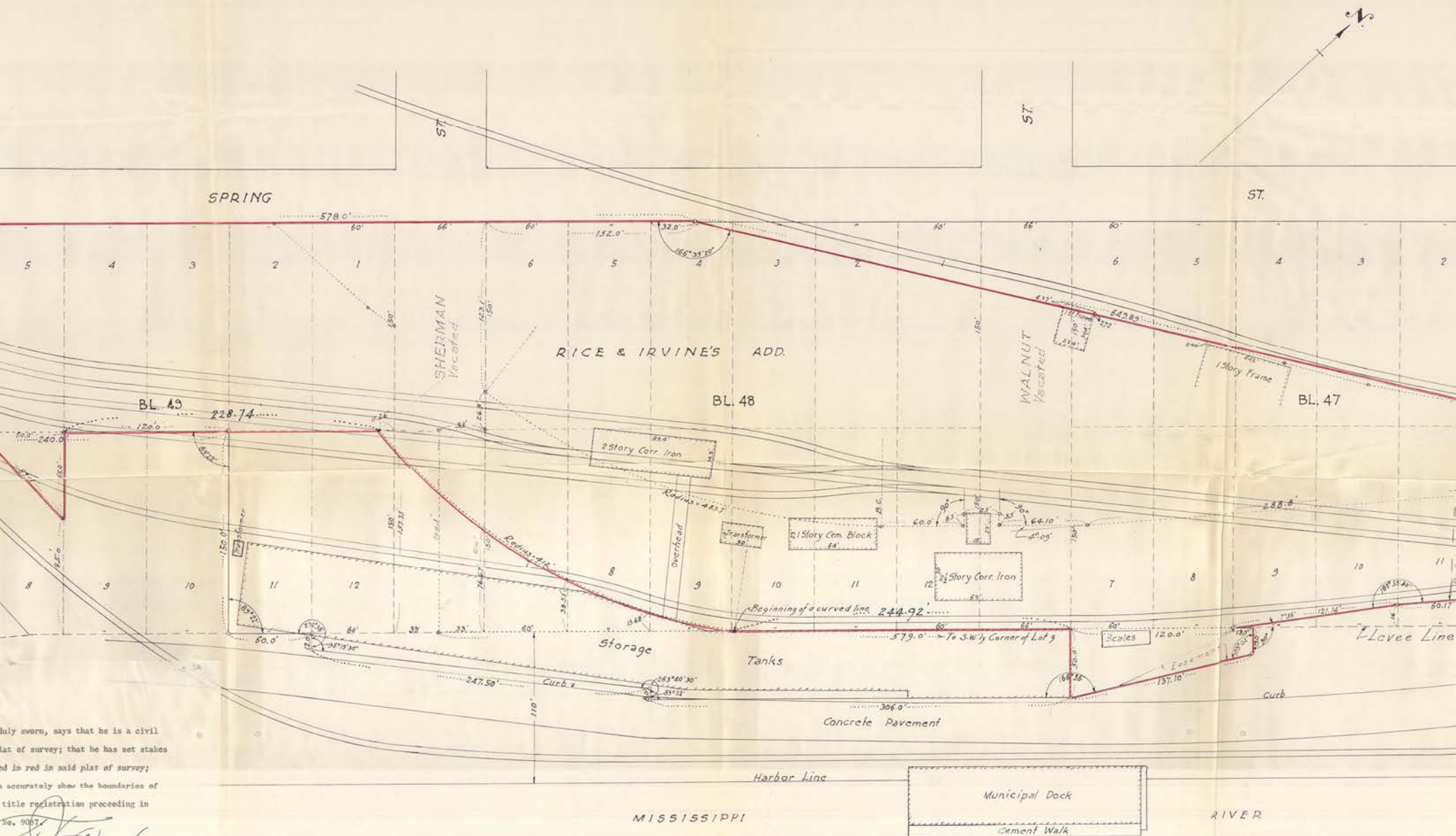


I hereby sworn, says that he is a civil
 plat of survey; that he has set stakes
 and in red in said plat of survey;
 to accurately show the boundaries of
 title registration proceeding in
 No. 9057.

F. J. Armstrong
 F. J. Armstrong



PLAT OF SURVEY
 FARMERS UNION BLOCKS
 PROPERTY IN BLOCKS
 IRVINE'S ADDN. TO ST. PA
 VACATED STREETS AND
 IN LEVEE.
 Scale 1"=40'