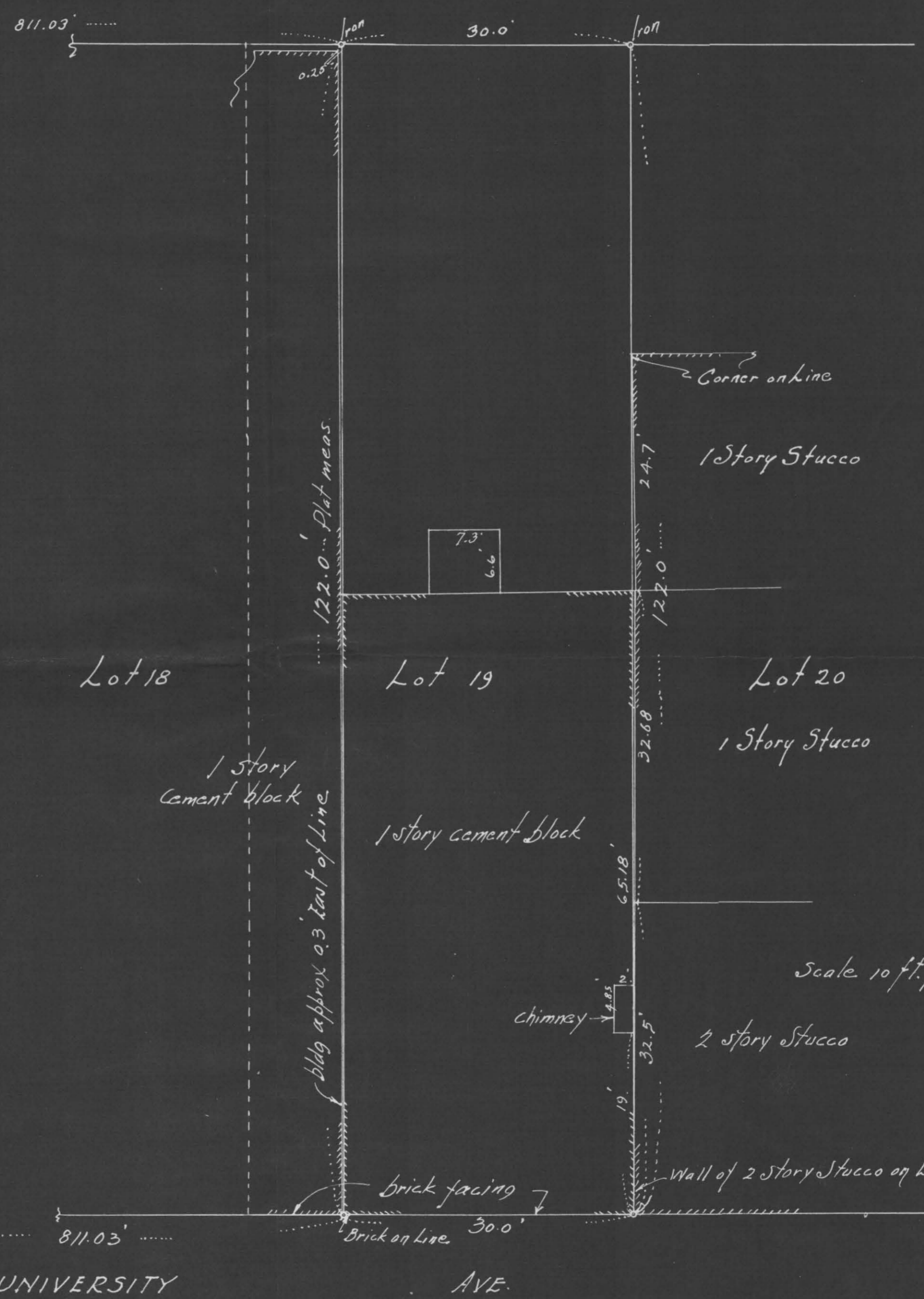


VICTORIA ST.
North & South 1/4 Line Section 35 Town 29 Range 23

16' ALLEY



Scale 10 ft. per inch

Scale 10 feet per inch

PLAT OF SURVEY OF THE EAST 30 FEET OF
LOT 19 BLOCK 3 SYNDICATE No 1 ADDITION
RAMSEY COUNTY, MINN.

July 3rd 1952

J. J. Orzechowski Civil Engr

7774