

PLAT OF SURVEY

by
R. C. WOLFGRAM, REGISTERED LAND SURVEYOR
ST. PAUL, MINNESOTA

I hereby certify that this is a true and correct plat of a survey of the land shown and described hereon, and that any monuments or markers indicated hereon have been placed as shown, and that any improvements or physical conditions indicated hereon are as shown.

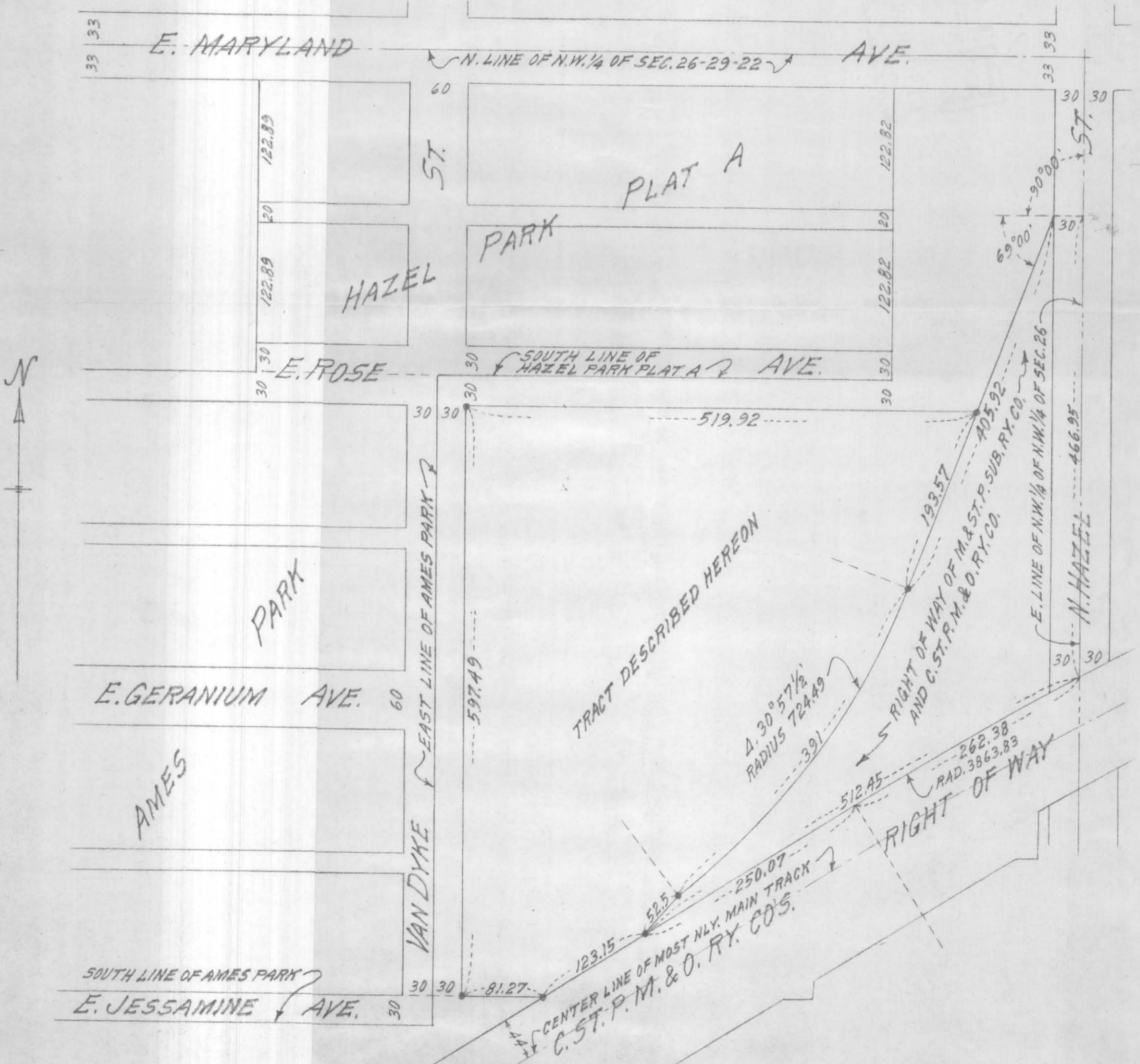
Surveyed Nov., 1952

Plat Scale - 1 in. = 100 ft. ● Indicates Iron Mont.

R. C. Wolfgram

Description -

That part of Northwestern one quarter lying Northerly of C. St. P. M. & O. Ry. Co. right of way and North line of Jessamine Avenue in Ames Park extended East; Westerly of Minneapolis and St. Paul Suburban Ry. Co. right of way; South of a line 30 feet South of and parallel with South line of Hazel Park Plat A which (and) said line extended East, and East of a line 30 feet East of and parallel with East line of Ames Park; in Section 26, Township 29, Range 22.



7576