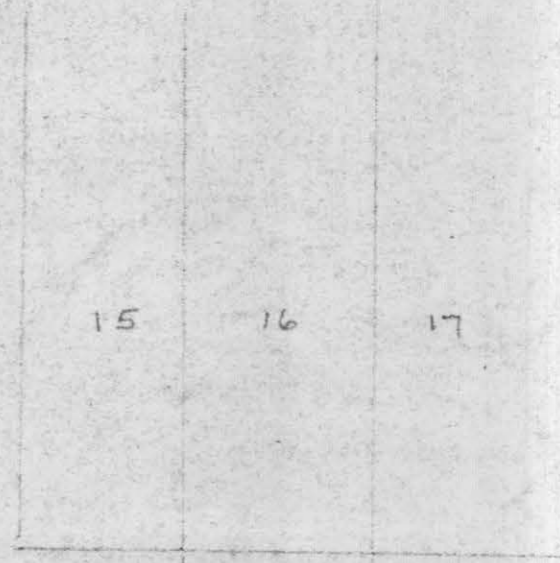


7416

# PLAT OF SURVEY

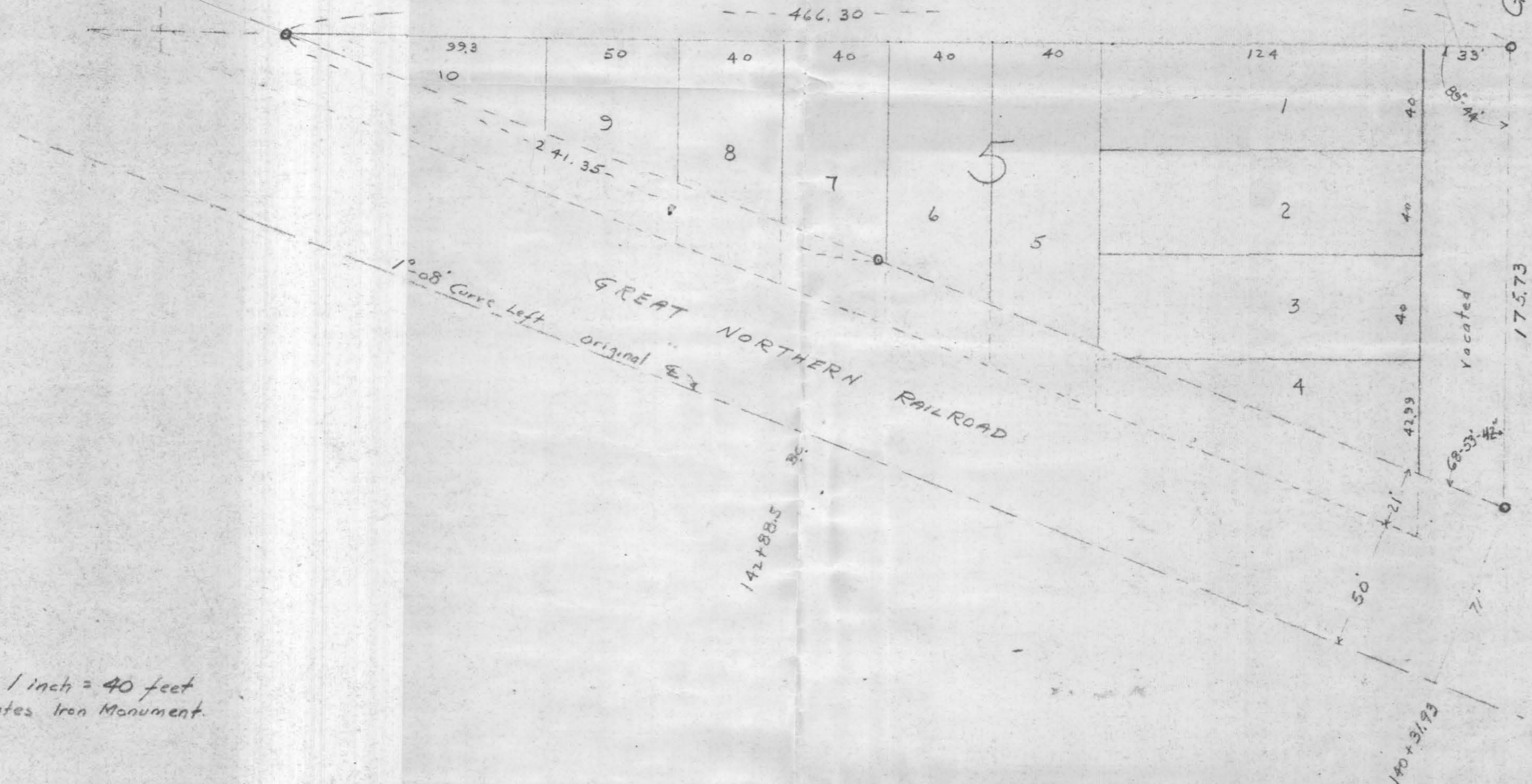
Lots one (1), two (2), three (3), four (4), five (5), six (6), seven (7), eight (8), nine (9), and ten (10), in Block five (5), Pacific Addition to St. Paul, together with Galtier St. vacated lying East of and adjoining said Block five (5), except Railway, and subject to railroad easements, according to the plat thereof on file and of record in the office of the Register of Deeds in and for Ramsey County, Minnesota



4

GALTIER ST

SYCAMORE ST.



Scale 1 inch = 40 feet  
o Indicates Iron Monument.

## CERTIFICATE OF SURVEY

I hereby certify that on Dec. 13, 1952 I surveyed the property described above and that the above plat is a correct representation of said survey.

*E. L. O'Connor*  
E. L. O'CONNOR M. 9136  
1430 Taylor Ave. St. Paul 4 Minn.  
Minn. Registration No. 2978

# 7416