

PLAT OF SURVEY

by
R. C. WOLFGRAM, REGISTERED LAND SURVEYOR
ST. PAUL, MINNESOTA

I hereby certify that this is a true and correct plat of a survey of the land shown and described hereon, and that any monuments or markers indicated hereon have been placed as shown, and that any improvements or physical conditions indicated hereon are as shown.

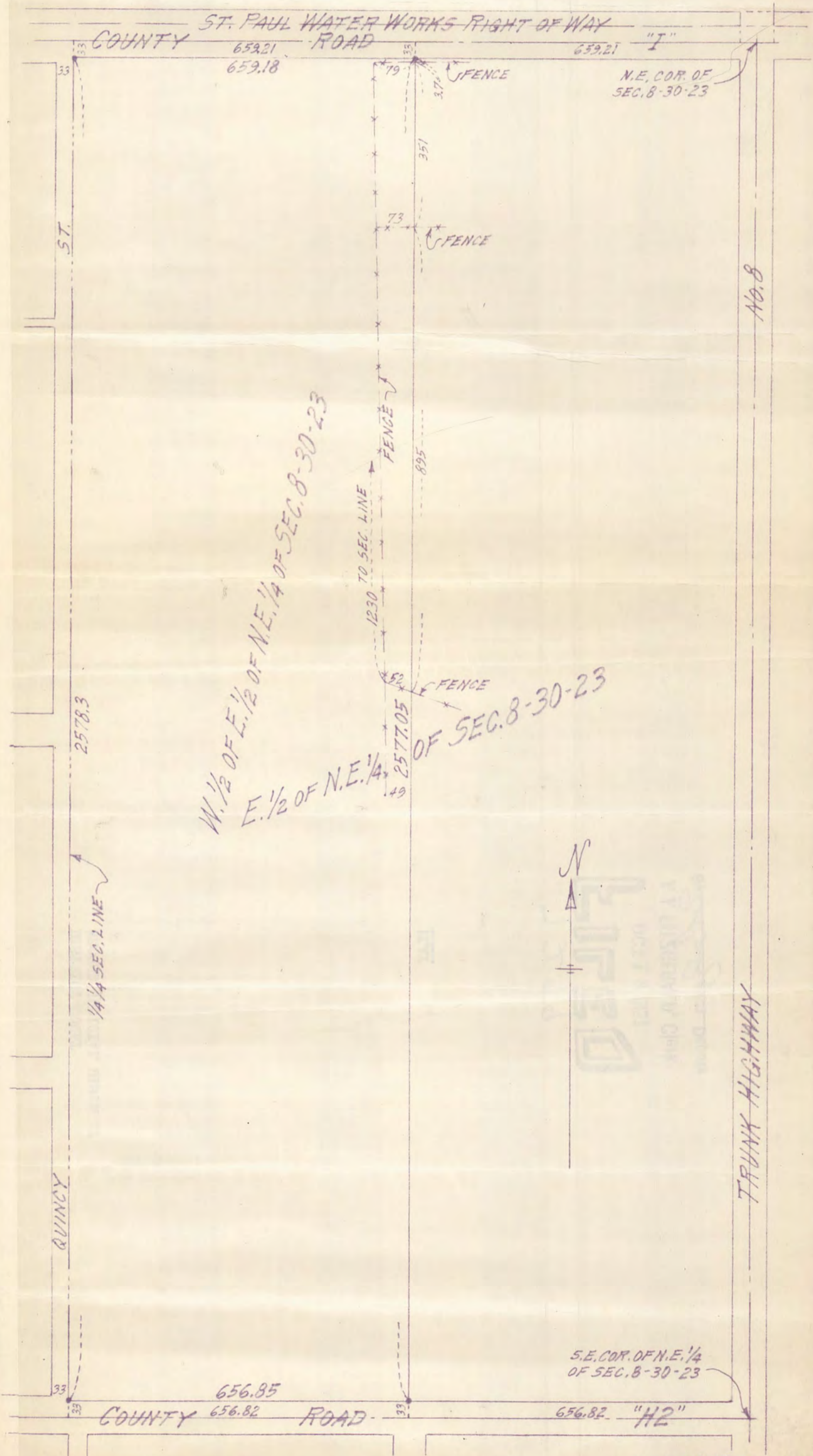
Surveyed Oct., 3, 1951

Plat Scale - 1 in = 200 ft. • Indicates Iron Mont.

R. C. Wolfgram

Description - -

The West half of the East half of the Northeast quarter of Section 8, Township 30, Range 23, according to the U.S. Govt. survey thereof, Ramsey Co., Minn.



7299