

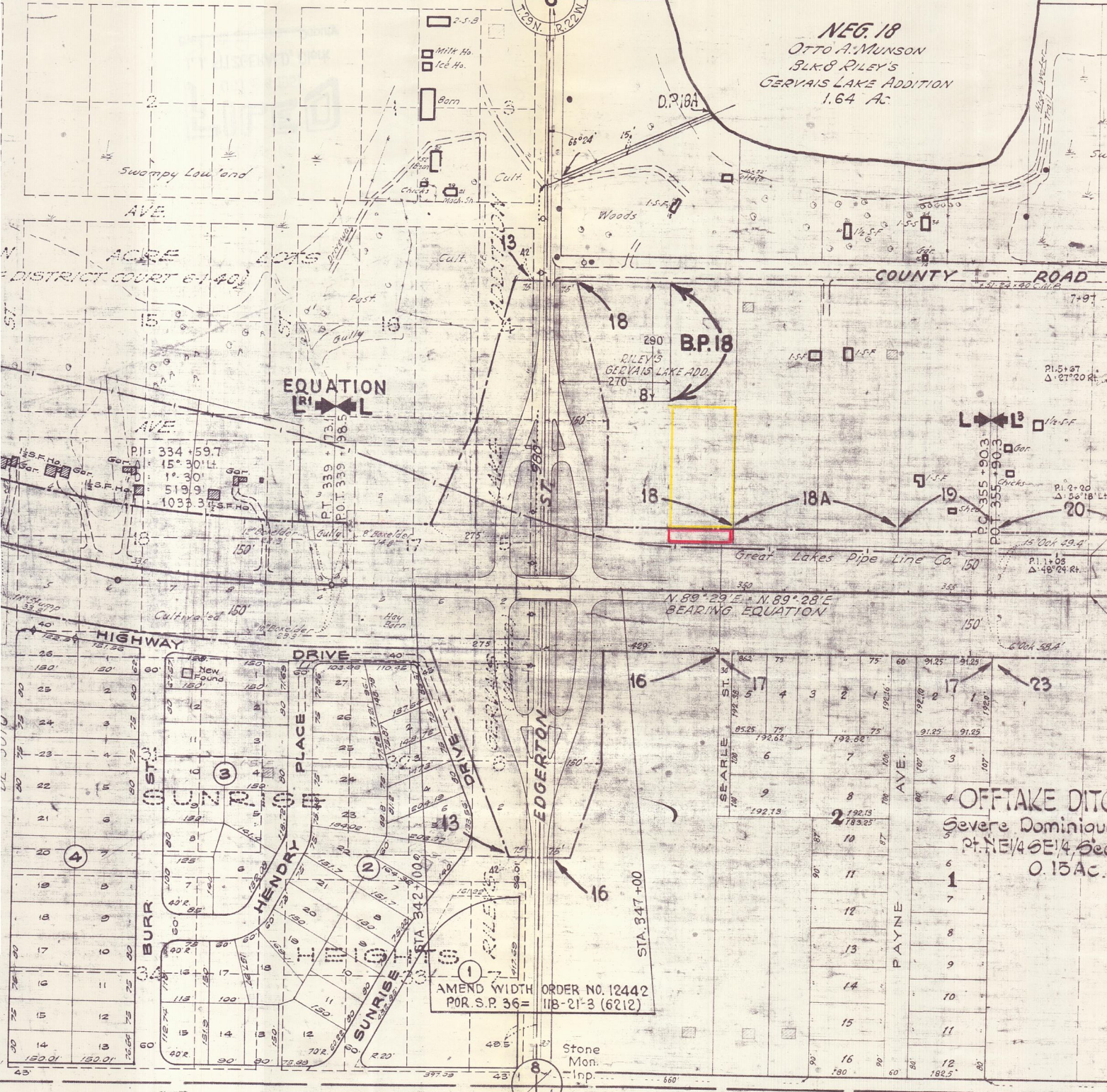
BLKS. 17, 18 & 19  
 4, 5 & 6 RILEY'S GERVAIS LAKE ADDITION  
 18.20 Ac.

0.34 Ac.



Stone Mon. Inp.

**NEG. 18**  
 OTTO A. MUNSON  
 BLK. 8 RILEY'S  
 GERVAIS LAKE ADDITION  
 1.64 Ac.



**NEG. 16**  
 JEWELL H. MUNSON, ET AL  
 W. 25 ROS. OF SW 1/4 SE 1/4  
 SEC. 8-29-22  
 3.53 Ac.

**NEG. 17**  
 JOHN B. LITTLE  
 PART SW 1/4 SE 1/4 SEC. 8-29-22  
 4.00 Ac.

**B.P. 18**  
 Otto A. Munson  
 Pt. Blk. 8, Riley's Gervais Lake Addn.  
 1.10 Ac.  
 Expires 9/30/40

# 72