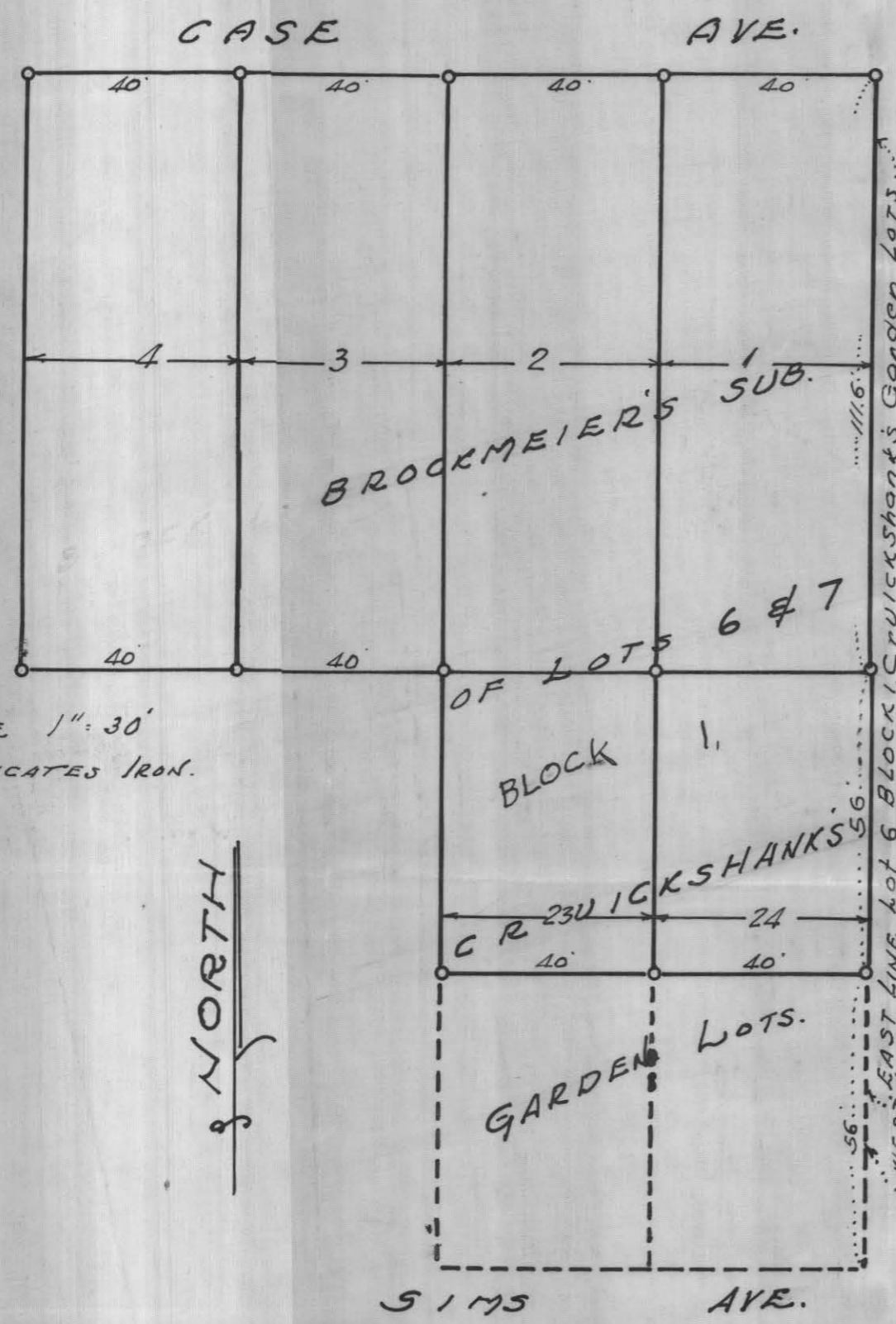


7197

PLAT OF SURVEY



SCALE 1" = 30'
O INDICATES IRON.

NORTH

State of Minnesota }
County of Ramsey } s.s.

T. J. Welch, being duly sworn desposes and says that he is a duly registered and practicing surveyor in the City of St. Paul, and County of Ramsey, Minnesota, that on September 14, 1951, he made a survey of Lots 1-2-3 & 4, and the North 1/2 of Lots 23 & 24, all in Brockmeier's Sub of Lots 6 & 7, Block 1, Cruickshank's Garden Lots and that this plat is a correct representation of said survey. There are no encroachments on the above described property.

T. J. Welch

Subscribed and sworn to before me this 28 day of Sept. 1951

Jos. Pavlicek

Notary Public, Ramsey County, Minnesota
My commission expires MAY 26, 1958

JOS. PAVLICEK
Notary Public, Ramsey County, Minn.
My Commission Expires May 26, 1958

J. J. FITZGERALD, Clerk
By [Signature] Deputy

OCT 16 1951
FILED