

PLAT OF SURVEY

BY
R. C. WOLFGRAM, REGISTERED LAND SURVEYOR
ST. PAUL, MINNESOTA

Surveyed Dec., 12, 1950.

I hereby certify that this is a true and correct plat of a survey of the land shown and described hereon, and that monuments or markers indicated hereon have been placed as shown, and that any improvements or physical conditions indicated hereon are as shown.

Plat Scale - 1 in = 20 ft.
Indicates Iron Mont.

R. C. Wolfgram

Description:-

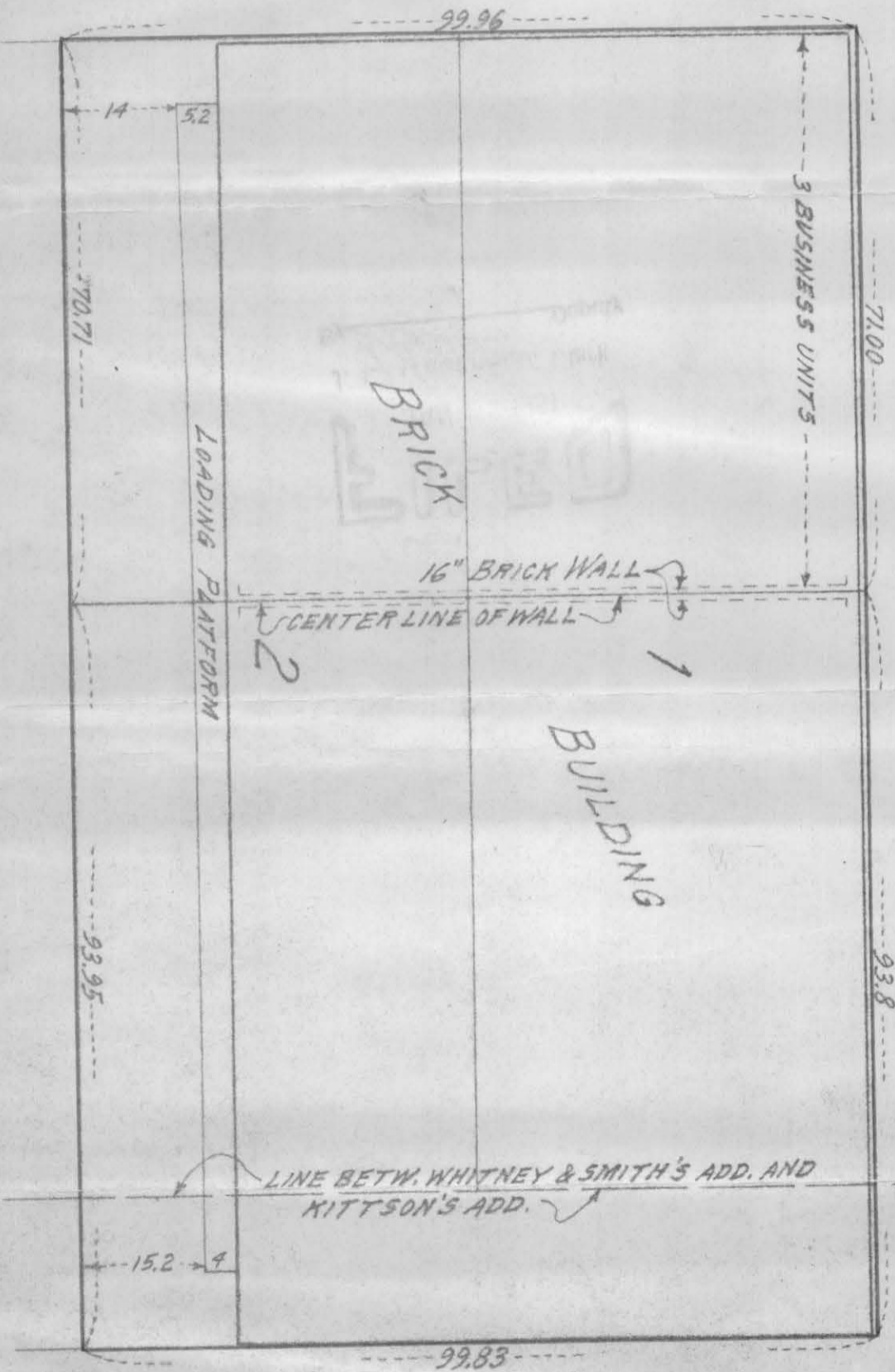
Lots 1 and 2, Block 12, Whitney and Smith's Addition to St. Paul, together with that strip of land lying between said lots and Broadway in Kittson's Addition to St. Paul.

ROSABEL

ST.

E. SIXTH

ST.



BROADWAY

7090

N