

PLAT OF SURVEY

BY
R. C. WOLFGRAM, REGISTERED LAND SURVEYOR
ST. PAUL, MINNESOTA

Surveyed Apr., 13, 1950

I hereby certify that this is a true and correct plat of a survey of the land shown and described hereon, and that monuments or markers indicated hereon have been placed as shown, and that any improvements or physical conditions indicated hereon are as shown.

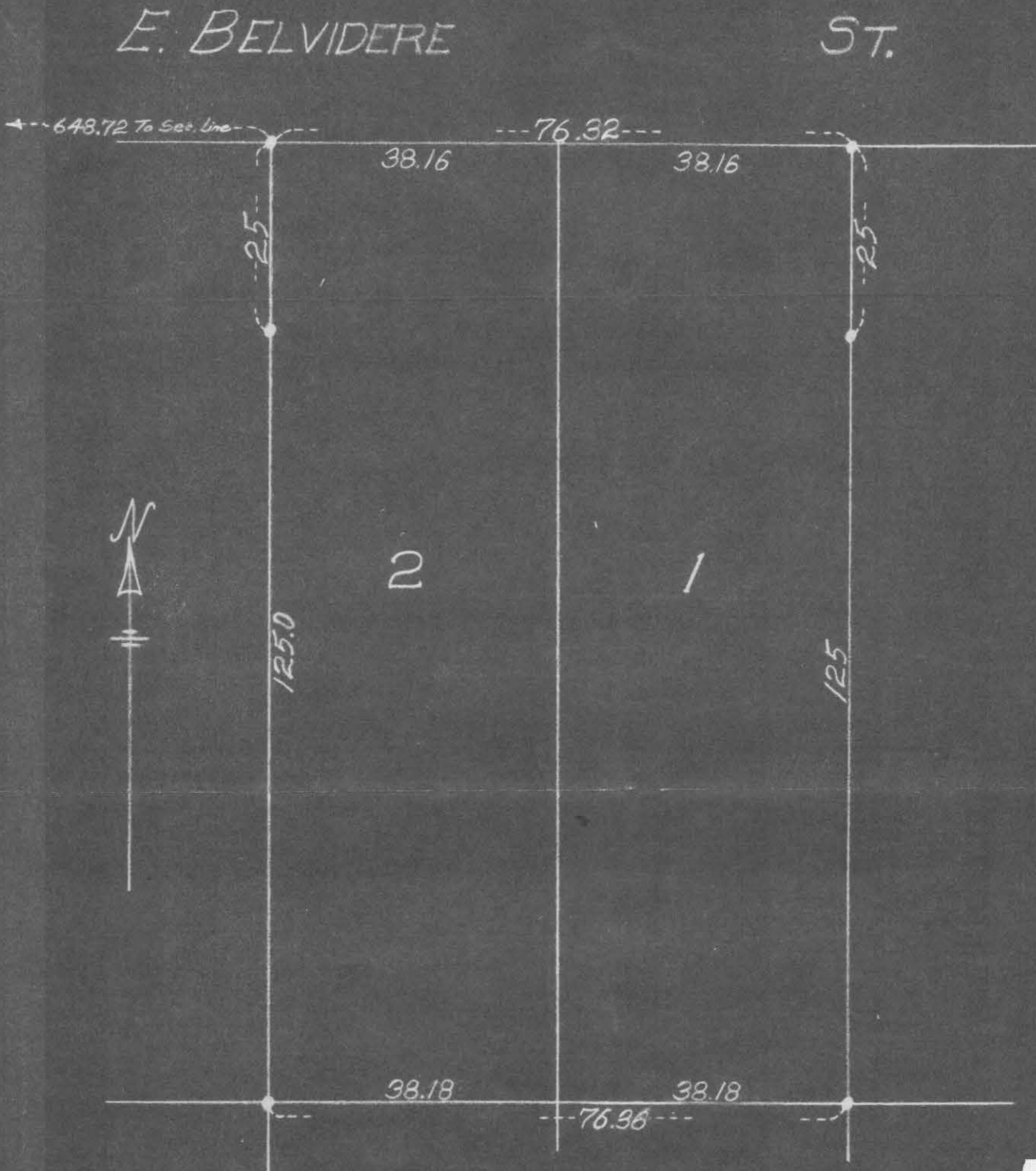
Plat Scale - 1 in. = 20 ft.

● Indicates Iron Mont.

R. C. Wolfgram

Description:—

Lots 1 and 2, Corrected Plat of Auditor's Subdivision of the
North $\frac{1}{2}$ of Lots 9, 10, and 11, Bidwell's Addition to West St. Paul.



7064