

7007

PLAT OF SURVEY

BY
R. C. WOLFGRAM, REGISTERED LAND SURVEYOR
ST. PAUL, MINNESOTA

Surveyed Nov, 29, 1950.

I hereby certify that this is a true and correct plat of a survey of the land shown and described hereon, and that monuments or markers indicated hereon have been placed as shown, and that any improvements or physical conditions indicated hereon are as shown.

Plat Scale - 1 in = 20 ft.

• Indicates Iron Mont.

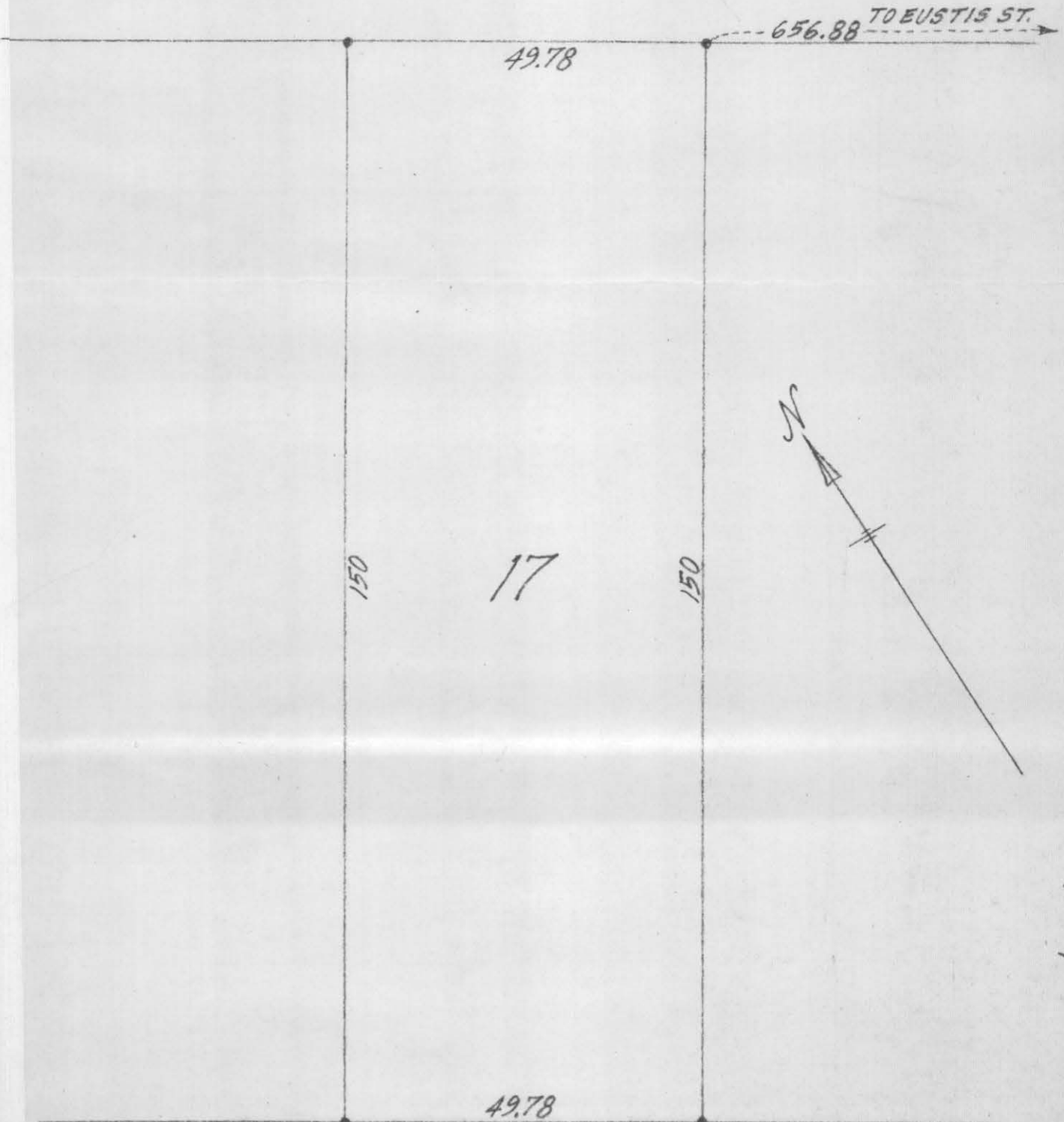
R. C. Wolfgram

Description:—

Lot 17, Auditor's Subdivision No. 9, St. Paul, Minn.

TERRITORIAL

ROAD



7007

7007