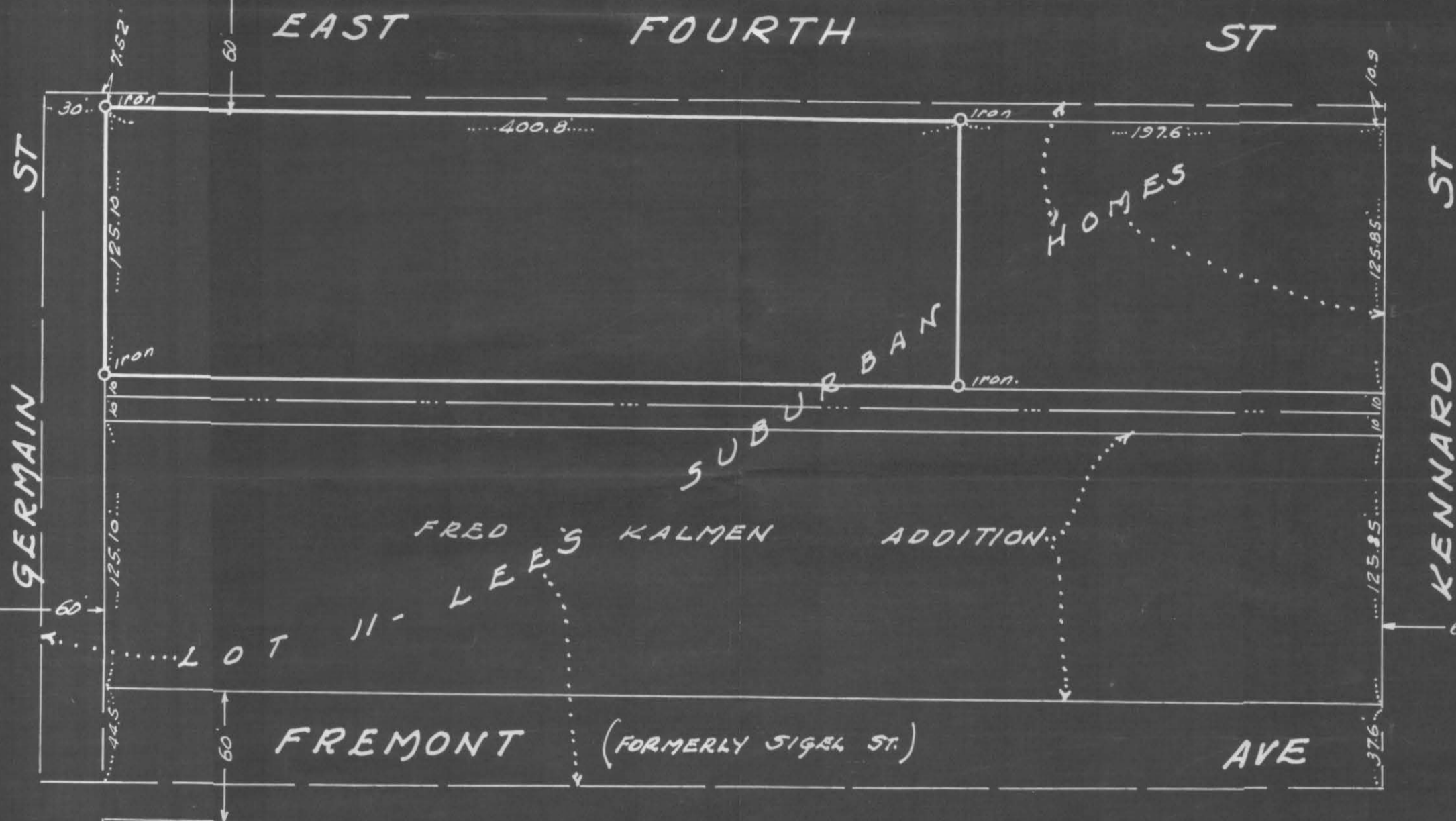


PLAT OF SURVEY

Scale 1" = 60'
 ○ Indicates Iron.

NORTH



State of Minnesota) ss.
 County of Ramsey)

T.J. Welch, being duly sworn deposes and says that he is a duly registered and practicing surveyor in the City of St. Paul, and County of Ramsey Minnesota, that on September 19, 1950, he made a survey of (except Streets,) that part lying West of a line and parallel with and 197.6 feet West from the West line of Kennard Street and North of a line which is 10 feet North from a line midway between East Fourth Street and Sigel Street of Lot 11 - Lee's Suburban Homes, and that this plot is a correct representation of said survey. There are no encroachments on this vacant property.

T.J. Welch

Subscribed and sworn to before me this 25 day of September 1950

Russell J. Peterson

Notary Public, Ramsey County, Minn.
 My Commission Expires

4-15-1952

Notary Public, Ramsey County, Minnesota
 My commission expires April 15, 1952.

6981