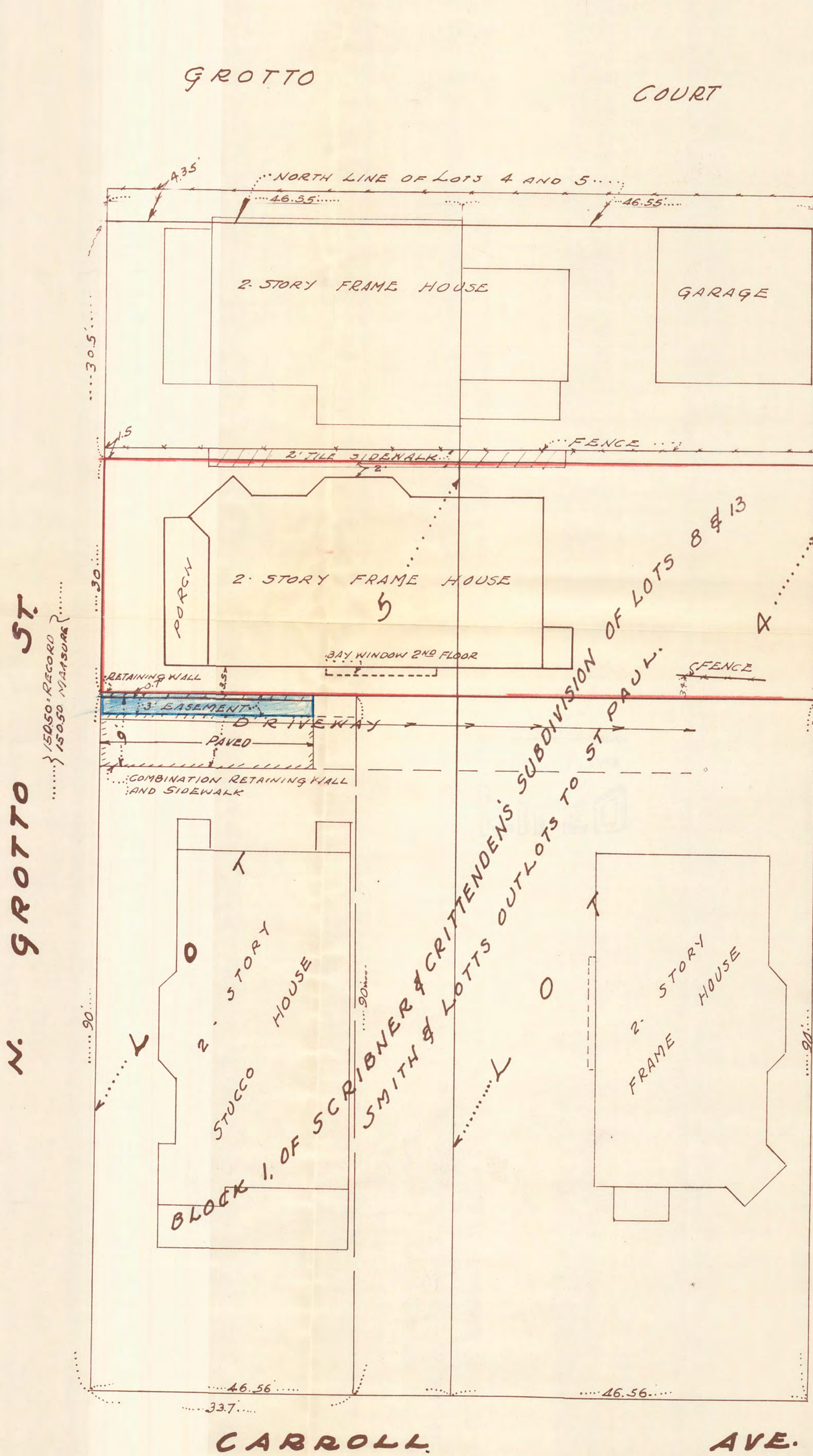


# PLAT OF SURVEY

SCALE 1" = 10'

T.J. WELCH, Registered Surveyor  
 738 Surrey Avenue  
 Tel. To. 0640. St. Paul, 6, Minn.



NORTH

State of Minnesota } S.S.  
 County of Ramsey }  
 T.J. Welch being duly sworn desposes and says, that he is a duly registered and practicing Surveyor in the City of St. Paul and County of Ramsey, Minnesota, that on August 4-1950 he made a survey of the North 30 feet of the South 120 feet of Lots 4 and 5, Block 1, of Scribner and Crittenden's Subdivision of Lots 8 and 13 of Smith and Lott's Outlots to St. Paul, and that this plat is a correct representation of said survey. There are no encroachments on the above described property.

T.J. Welch  
 Subscribed and sworn to before me this 10 day of August 1950.

Raymond J. Osterink  
 Notary Public, Ramsey County, Minn.  
 My commission expires April 15, 1952

NOTARY PUBLIC, RAMSEY COUNTY, MINN.  
 MY COMMISSION EXPIRES 4-15-52

#6936