

PLAT OF SURVEY OF PART OF BLOCK 170  
 WEST ST. PAUL PROPER; CUSTER ST. ADDN;  
 PART OF BLOCK 1 EATON & MORRISON'S ADDN,  
 AND PART OF LOT 2 BLOCK 22 BAZIL & ROBERTS  
 ADDN TO WEST ST. PAUL.

Surveyed by me in September 1949  
*A. W. ... Civil Eng'r*

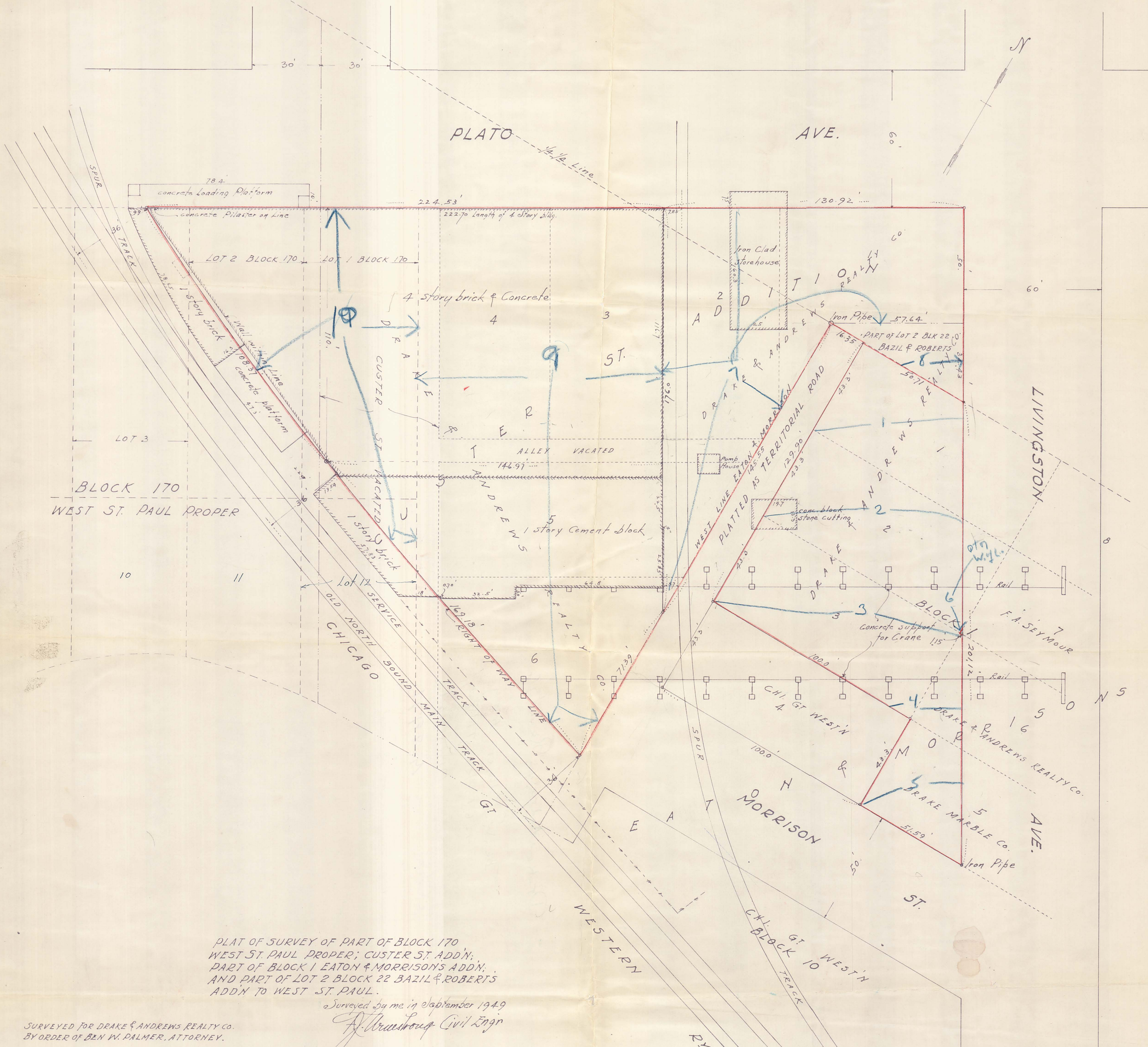
SURVEYED FOR DRAKE & ANDREWS REALTY CO.  
 BY ORDER OF BEN W. PALMER, ATTORNEY.

Scale 20 feet per inch

6922

#6922



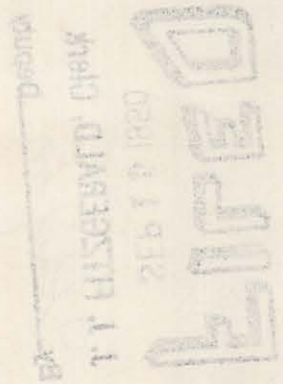


PLAT OF SURVEY OF PART OF BLOCK 170  
 WEST ST. PAUL PROPER; CUSTER ST. ADDN;  
 PART OF BLOCK 1 EATON & MORRISON'S ADDN;  
 AND PART OF LOT 2 BLOCK 22 BAZIL & ROBERTS  
 ADDN TO WEST ST. PAUL.

Surveyed by me in September 1949  
*A. W. [Signature]* Civil Engr

SURVEYED FOR DRAKE & ANDREWS REALTY CO.  
 BY ORDER OF BEN W. PALMER, ATTORNEY.

Scale 20 feet per inch



6922

#6922