

I HEREBY CERTIFY THAT
 NO PERSON WAS IN POSSESSION
 OF THIS PROPERTY AT THE
 TIME OF MAKING THIS SURVEY
Jens Pedersen
 SURV.

LAKE CONTO VILLAS

SURVEY OF

N. 1/2 LOT 2

AUG 26-1910

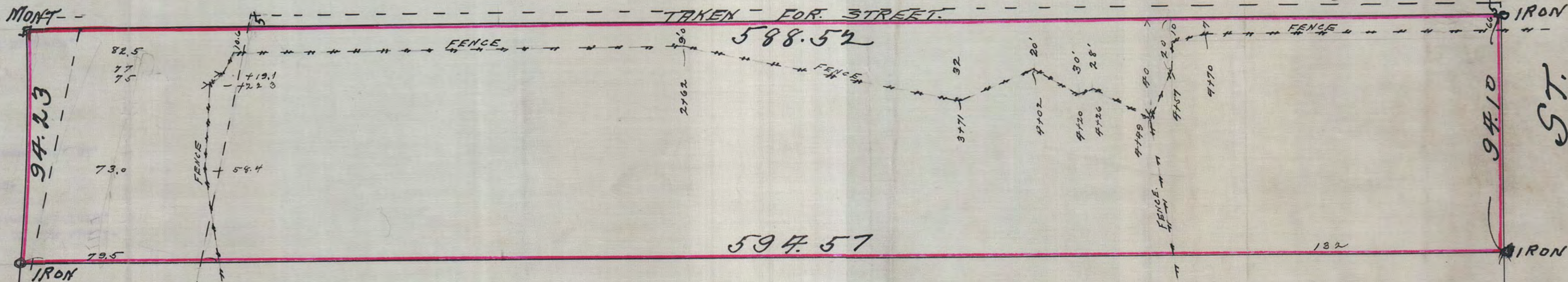
JENS PEDERSEN
 SURV.

ST. PAUL AUG 26-1910

I HEREBY CERTIFY TO HAVING
 SURVEYED THE N. 1/2 LOT 2 LAKE CONTO VILLAS
 EXCEPT PART TAKEN FOR STREETS AND
 HAVE PLACED IRON MONUMENTS AT THE
 CORNERS AND ALL LOCATIONS AND DISTANCES
 AS SHOWN ON THIS MAP AND THE SAME
 IS CORRECT.
Jens Pedersen
 SURV.

MARYLAND ST.

LAKE CONTO BOULEVARD.



#688