

# PLAT OF SURVEY

SURVEY OF LOTS 56 & 57 CORRECTED PLAT OF AUDITORS SUBDIVISION  
OF THE NORTH ONE-HALF OF LOTS 9-10 & 11, BIDWELLS ADDITION TO  
WEST ST. PAUL.

o Indicates Iron.  
Scale 100' = 1"

T. J. WELCH, REGISTERED SURVEYOR.  
738 Surrey Avenue.  
St. Paul, Minn.  
12-28-49.

Tot. To. 0640

Lot 12  
BIDWELLS ADDITION TO WEST ST. PAUL.

Lot 12  
BIDWELLS ADDITION  
TO WEST ST. PAUL

NORTH  
S

E. BELVIDERE ST.

E. BELVIDERE ST.

AVE.

AVE.

HALL

HALL

NORTH LINE OF LOTS 9-10 & 11  
BIDWELLS ADDITION TO  
WEST ST. PAUL

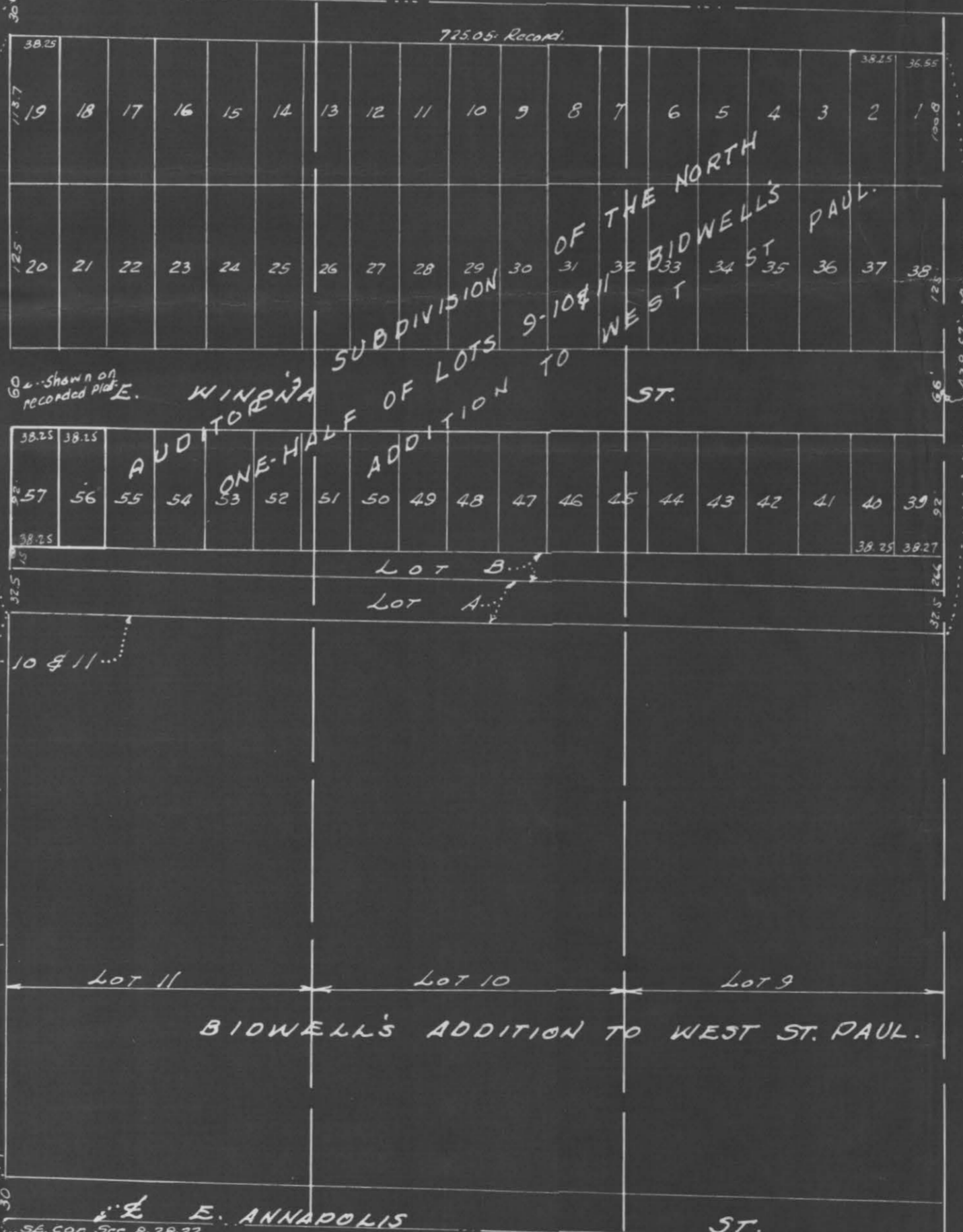
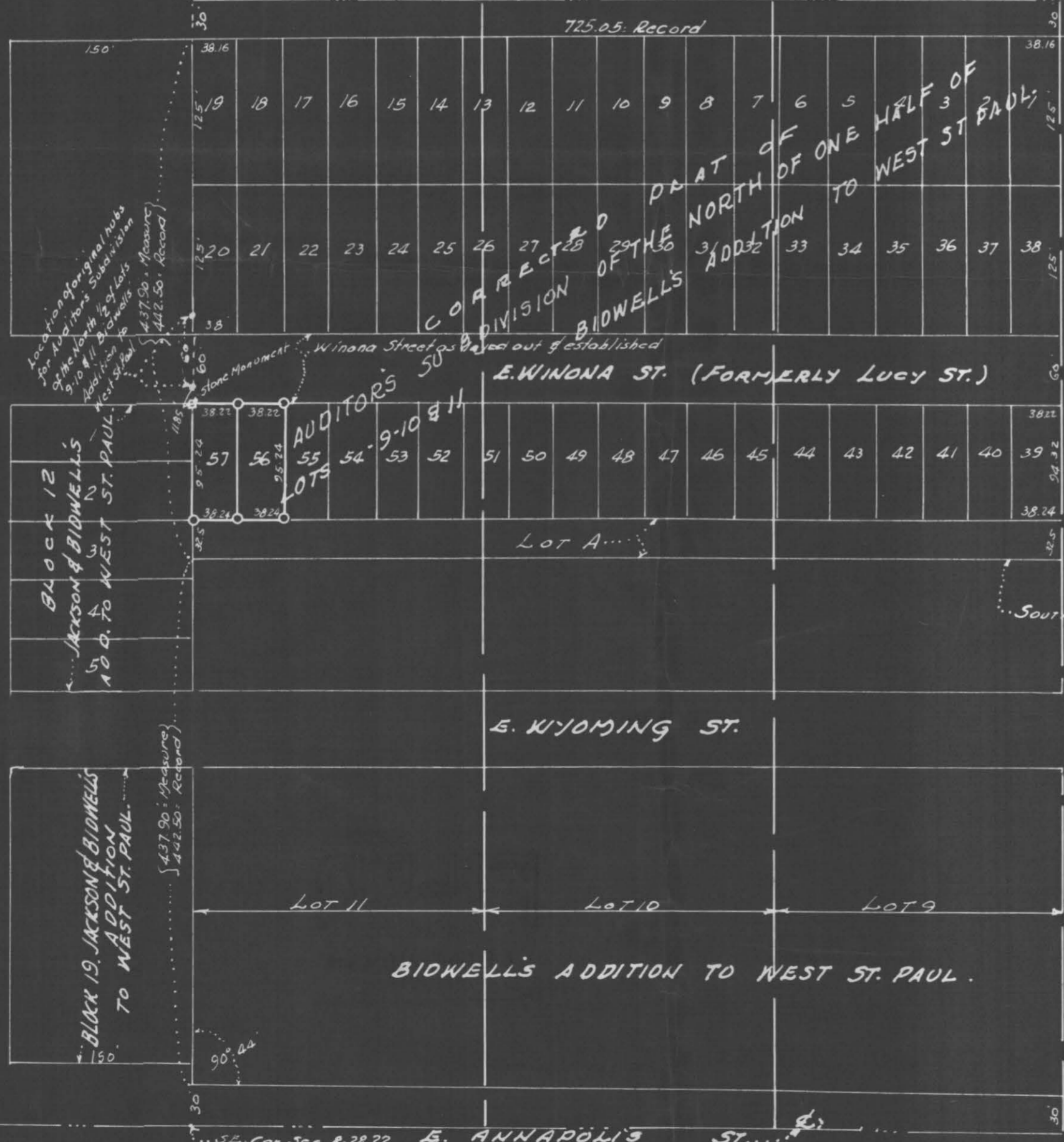
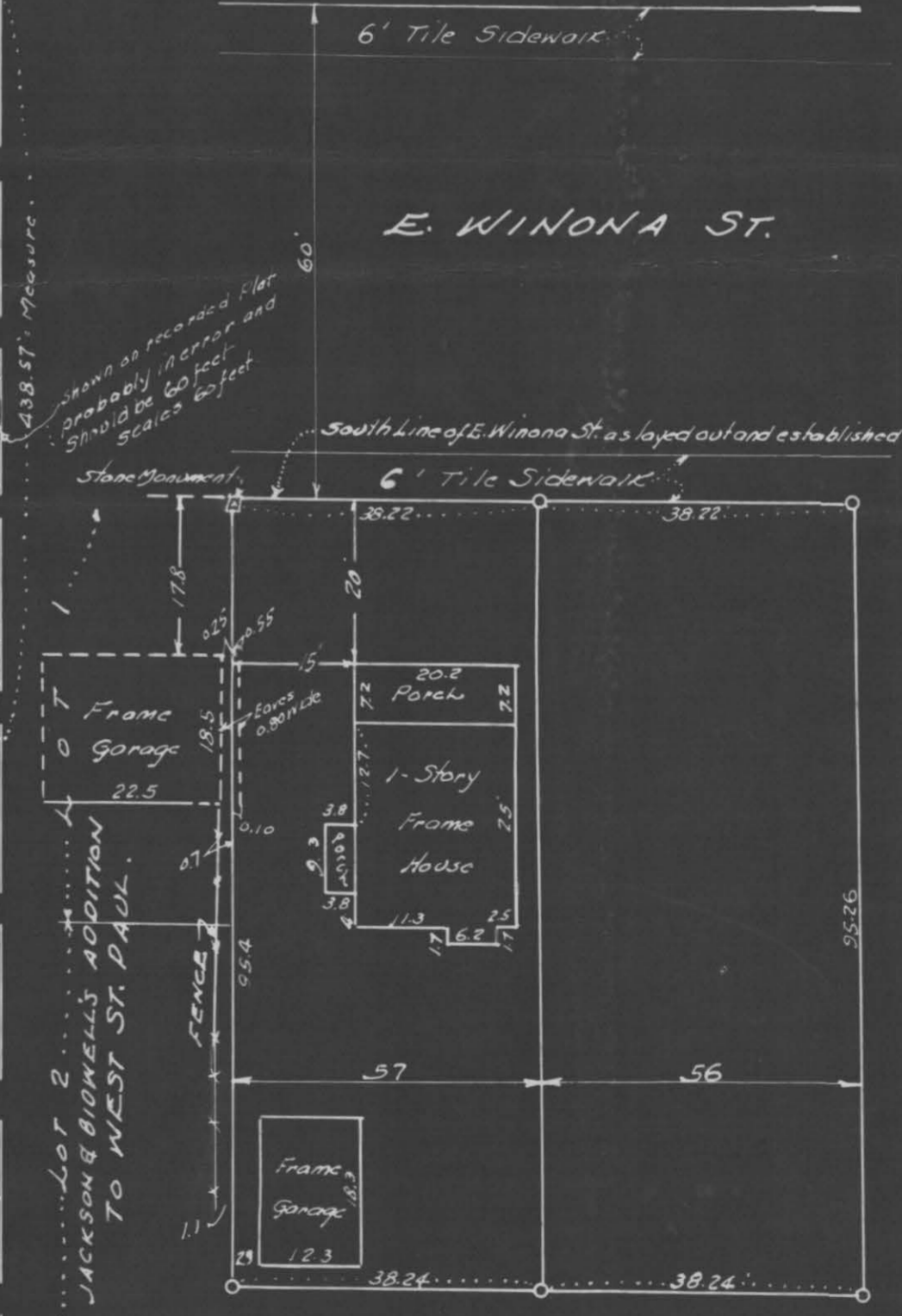
60' - Shown on  
recorded plat E.

60' - Shown on  
recorded plat E.

(437.90' Measure)  
442.50' Record

(437.90' Measure)  
442.50' Record

SOUTH LINE OF THE NORTH ONE-HALF OF LOTS 9-10 & 11  
BIDWELLS ADDITION TO WEST ST. PAUL



E. ANNAPOLIS ST.

E. ANNAPOLIS ST.