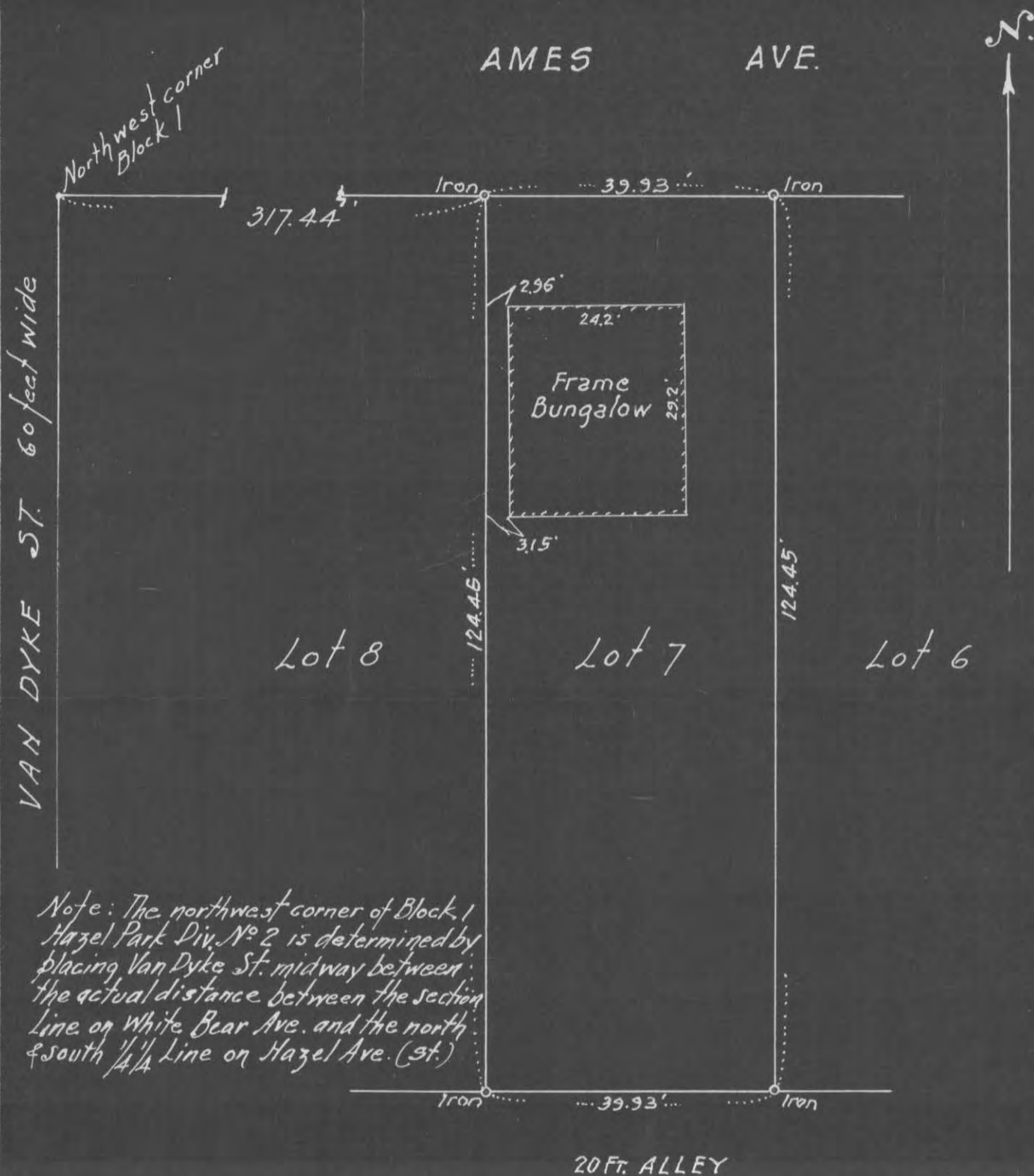


CERTIFICATE of SURVEY

F. J. ARMSTRONG
Civil Engineer and Surveyor
ST. PAUL, MINN.



Note: The northwest corner of Block 1 Hazel Park Div. No 2 is determined by placing Van Dyke St. midway between the actual distance between the section line on White Bear Ave. and the north & south 1/4 line on Hazel Ave. (st.)

Scale 1" = 20'

I HEREBY CERTIFY that on the 11th day of May, A. D. 1949
I made a survey of the following described property, to-wit: Lot 7 Block 1, Hazel Park Div. No 2; St. Paul, Minn

Subscribed and sworn to before me this _____ day of _____ 19____

Notary Public.

and the map hereon shown is a true and correct map of said survey and that the improvements thereon indicated are correctly shown.

F. J. Armstrong
Civil Engineer.

My Commission Expires _____

Book 87 p 29

6685 9-531