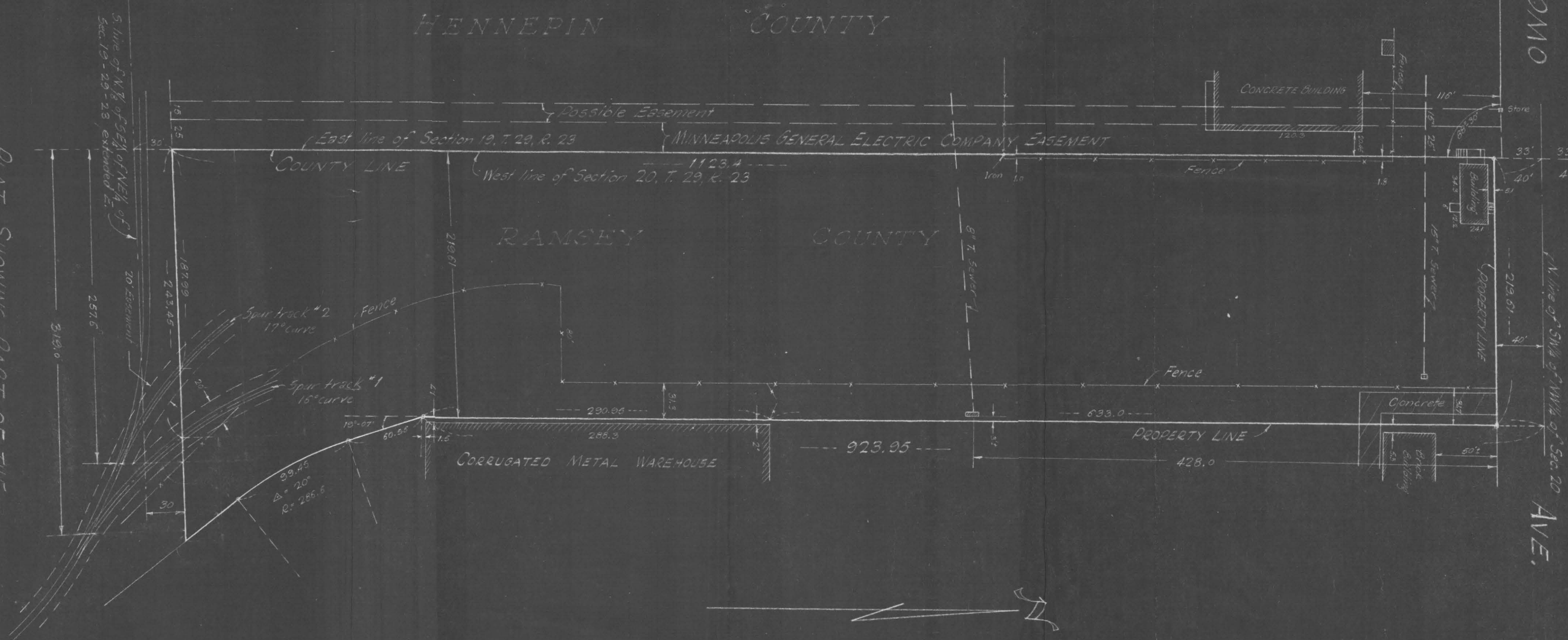


HENNEPIN COUNTY

COMO



PLAT SHOWING PART OF THE

MINNEAPOLIS-MOLINE POWER IMPLEMENT CO'S PROPERTY

IN SECTION 20, TOWNSHIP 29, RANGE 23, RAMSEY COUNTY, MINN.

JUNE, 1944

Scale: 1" = 60'

Egan, Field & Nowak  
Engineers & Surveyors

N line of SW 1/4 of NW 1/4 of Sec. 20 AVE.

