

PLAT OF SURVEY

T. J. WELCH, REGISTERED SURVEYOR.
738 SURREY AVENUE.
ST. PAUL, MINN.

Scale 1" = 40'
o Indicates Iron.

State of Minnesota) ss.
County of Ramsey) T. J. Welch, being duly sworn deposes and says that on December 27, 1949 he made a survey of - All that part of the following described tract of land lying North of the Northernly line of Hague Avenue, Beginning on the continued Northernly line of Block Four (4), Schroeder's Addition to the City of St. Paul, and 30 feet directly West of the Northwest Corner of said Block Four (4); thence running directly West 52.94 feet; thence directly South 192.01 feet; thence running directly East 52.94 feet; thence directly North on the West line of Herschel Avenue, 192.01 feet to the place of beginning, according to the plat thereof on file and of record in the office of the Register of Deeds in and for Ramsey County, Minnesota, and this plat is a correct representation of said survey. There are no encroachments on the above described property as shown.

T. J. Welch

Subscribed and sworn to before me this 15 day of January, 1950.

Notary Public, Ramsey County, Minnesota.

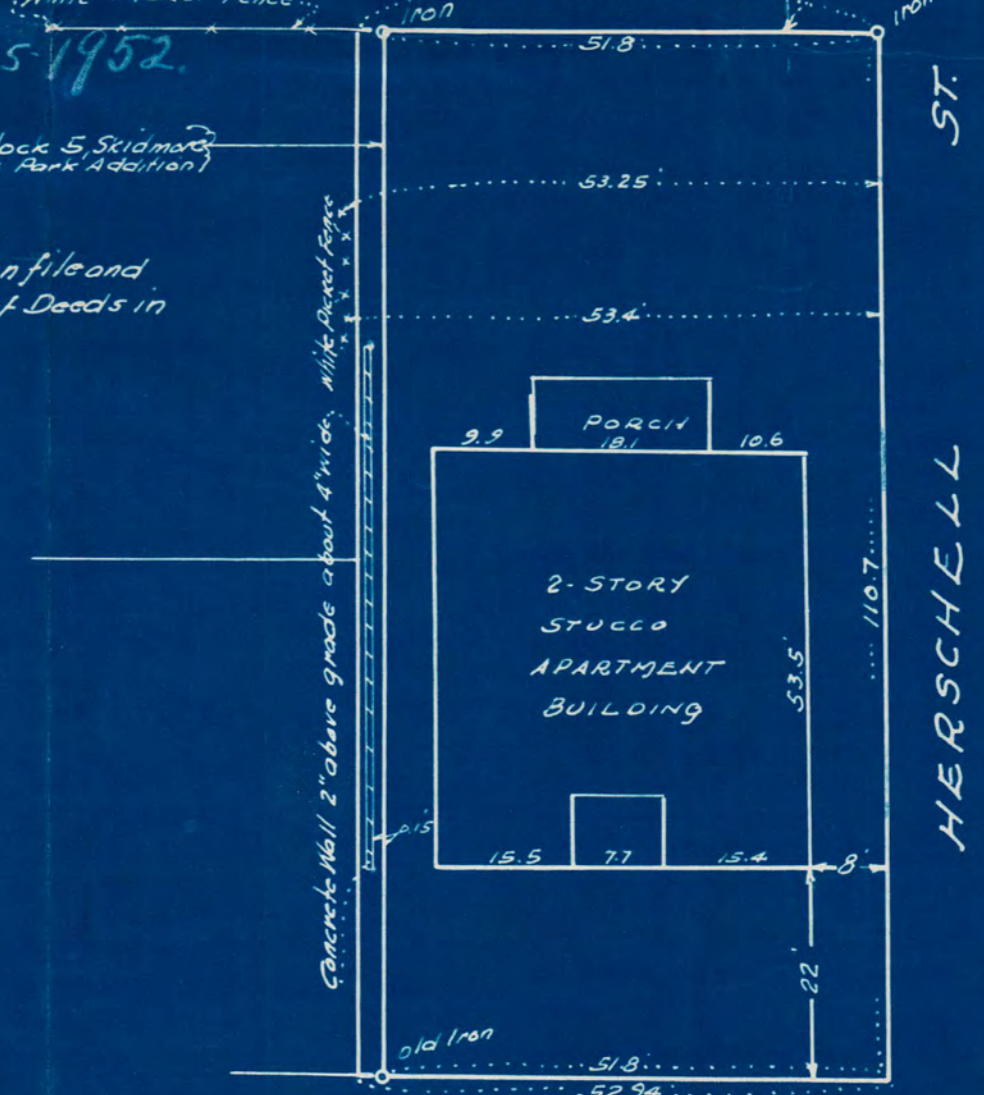
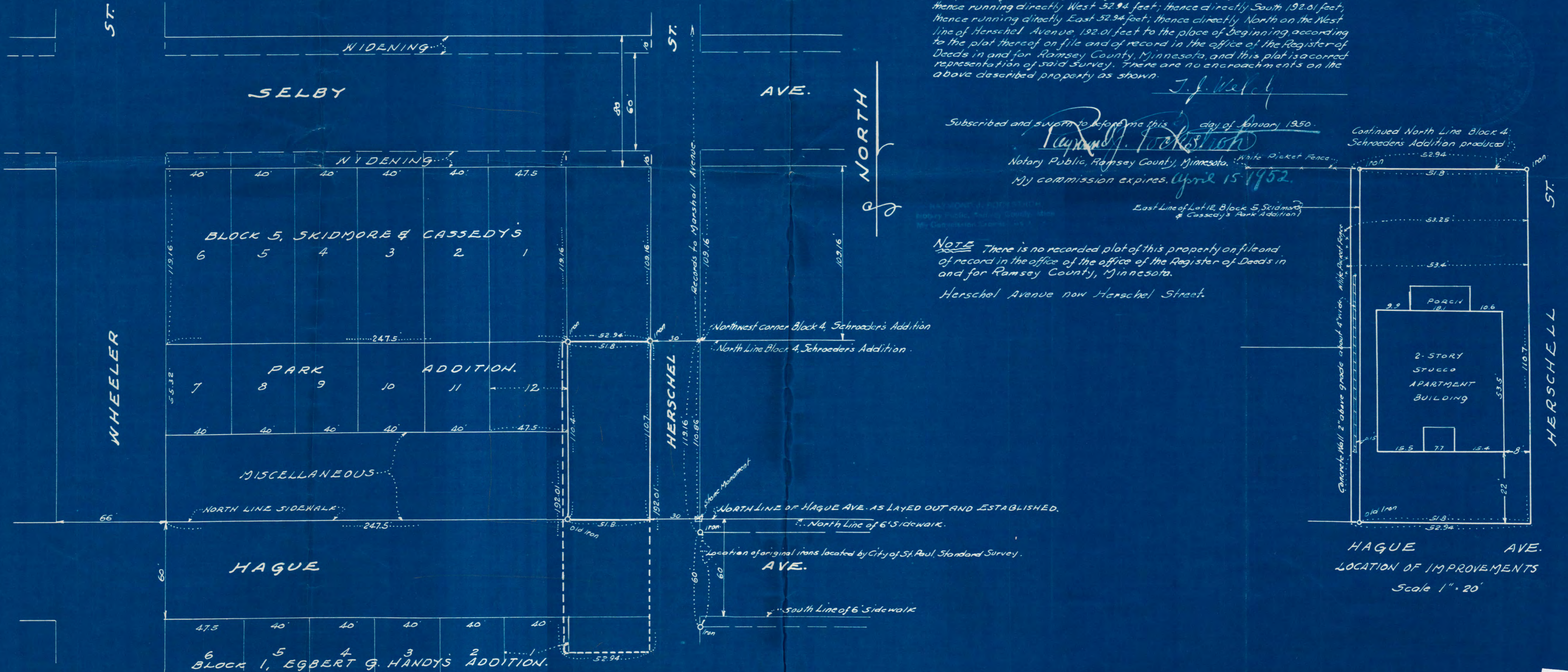
My commission expires April 15, 1952.

Continued North Line Block 4, Schroeder's Addition produced

East Line of Lot 12, Block 5, Skidmore & Cassedy's Park Addition

NOTE There is no recorded plat of this property on file and of record in the office of the office of the Register of Deeds in and for Ramsey County, Minnesota.

Herschel Avenue now Herschel Street.



HAGUE AVE.
LOCATION OF IMPROVEMENTS
Scale 1" = 20'

6617