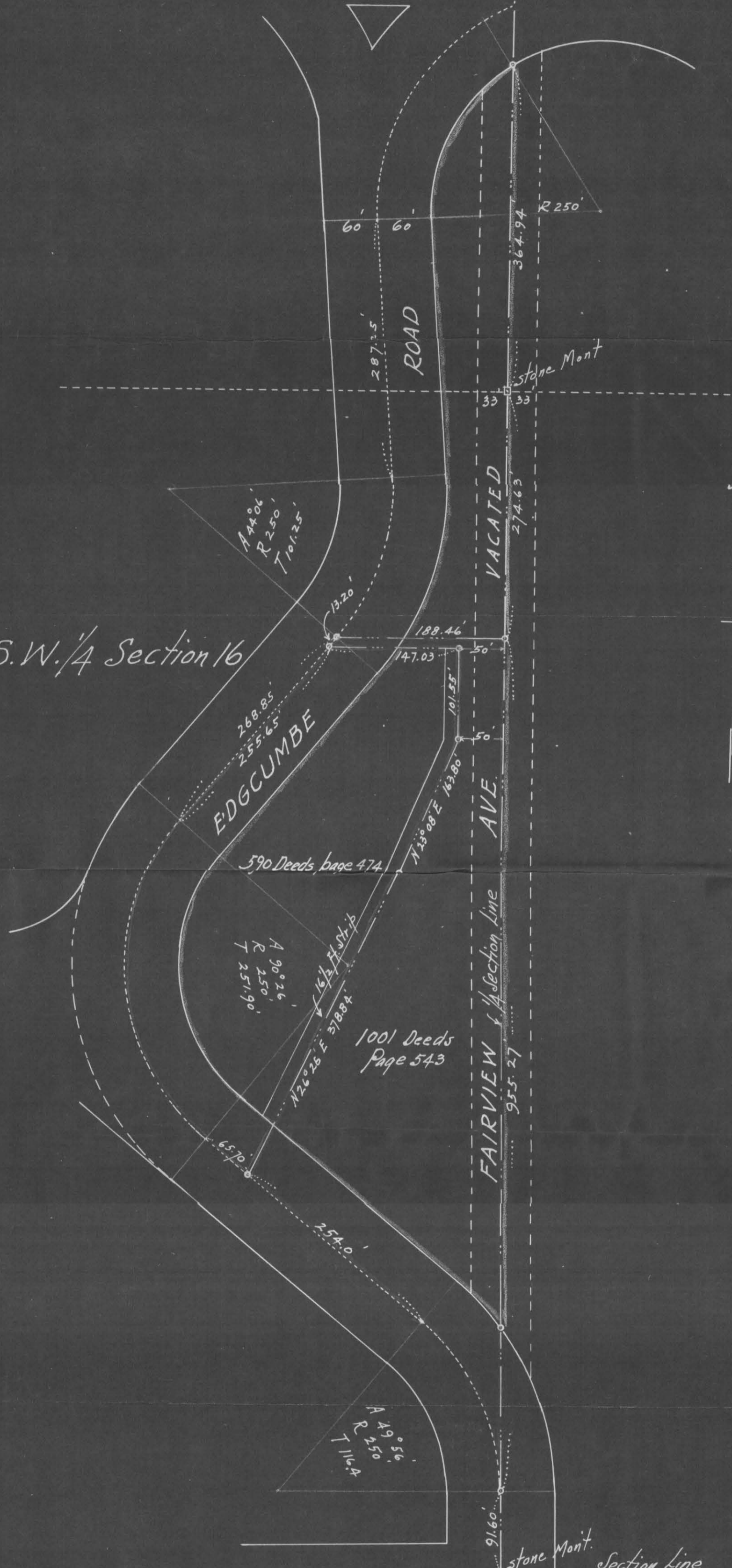


#6552

S.W. 1/4 Section 16



I hereby certify that this map correctly represents that part of the South west 1/4 of Section 16 Town 28 Range 23 lying Easterly of the Edgumbe Road and includes that part of Fairview Ave. vacated, and the above described property embraces the different parcels herein indicated; as platted by me this 8th day of March 1949.

J. J. Livingston - Civil Eng'r

Scale 100 feet per inch

Subscribed and sworn to before me this 8th day of March A.D. 1949

Helen Green
 Notary Public, Ramsey County, Minn.
 My Commission Expires

HELEN GREEN
 Notary Public, Ramsey County, Minn.
 My Commission Expires July 15, 1955

 6552