

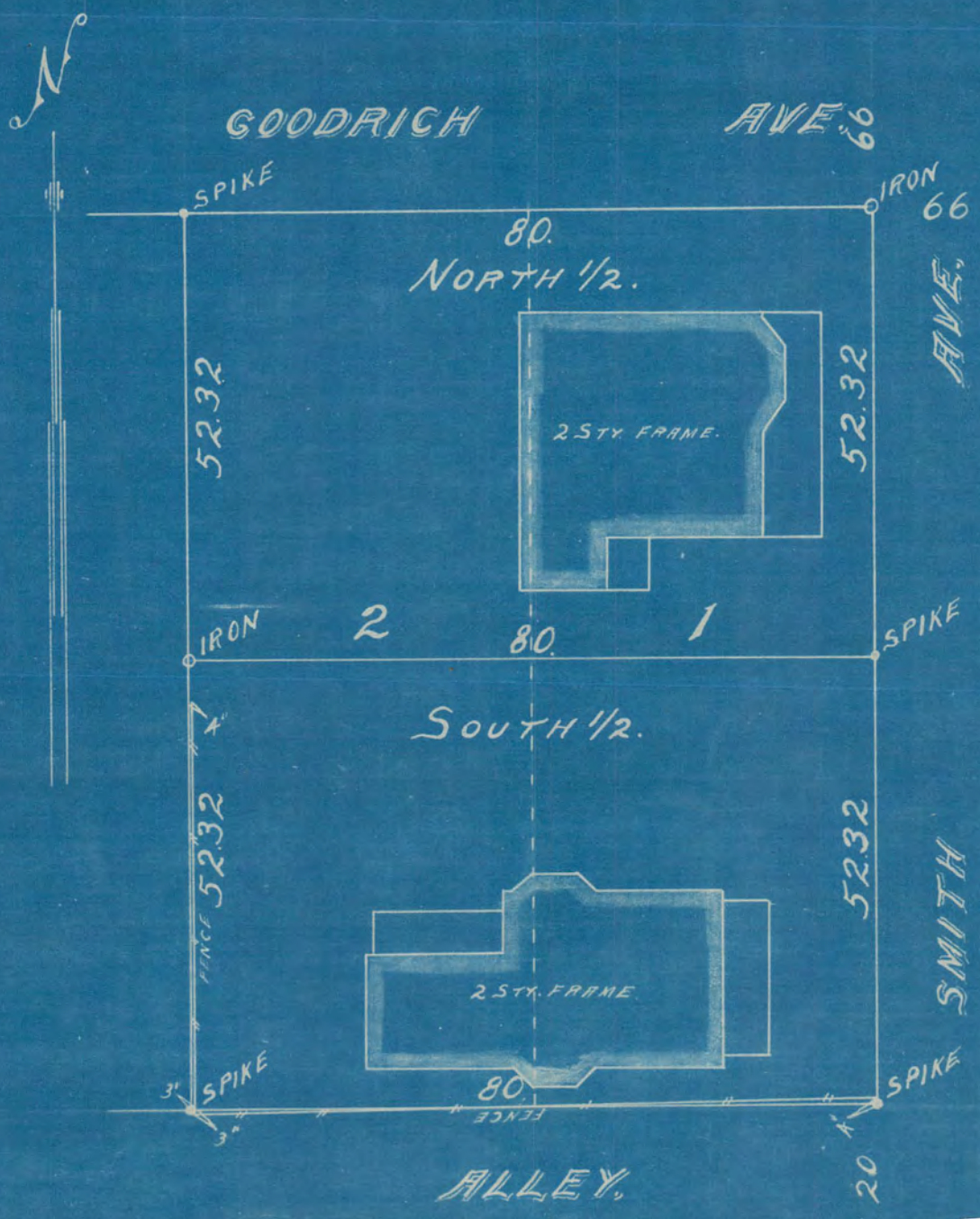
(3)

NORTH & SOUTH 1/2.
LOT'S 1, & 2, BLK. 2.

BERNHEIMERS ADD.

JOHN B. IRVINE, SURVEYOR.
416 GLOBE BLDG.
ST. PAUL MINN.
DEC. 31-07.

Scale 20ft. per. inch



#641

JOHN B. IRVINE

JOHN B. IRVINE CIVIL ENGINEER AND SURVEYOR

ROOM 416 GLOBE BUILDING

COR. FOURTH AND CEDAR STS.



St. Paul, Minn. Dec. 31st, 1907. 190

Lots Surveyed
Lands Subdivided
Leveling and Street Grades
Estimates Made
Drafting and Blue Printing
Surveys for Lawsuits
Drainage Surveys
Topographical Surveys

TELEPHONES

N. W. { Office, Main 2535-J
 { Office, Main 1779
 { Residence, Dale 783-J2
Tri-State { Office, 1325
 { Office, 334

Mr. H.O. Sargent^a,

#311 Amer. Natl. Bk. Bldg. City.

Dear Sir:-

I hereby certify to having surveyed this date the north and south 1/2, Lots 1 & 2, Bernheimers Addition, and the same is correct as shown by plat furnished by me of said survey.

Yours truly,

John B. Irvine
Surveyor.

JBI-atb

Handwritten notes and signatures in blue ink, including "Bernheimers Addition" and "Lots 1 & 2".