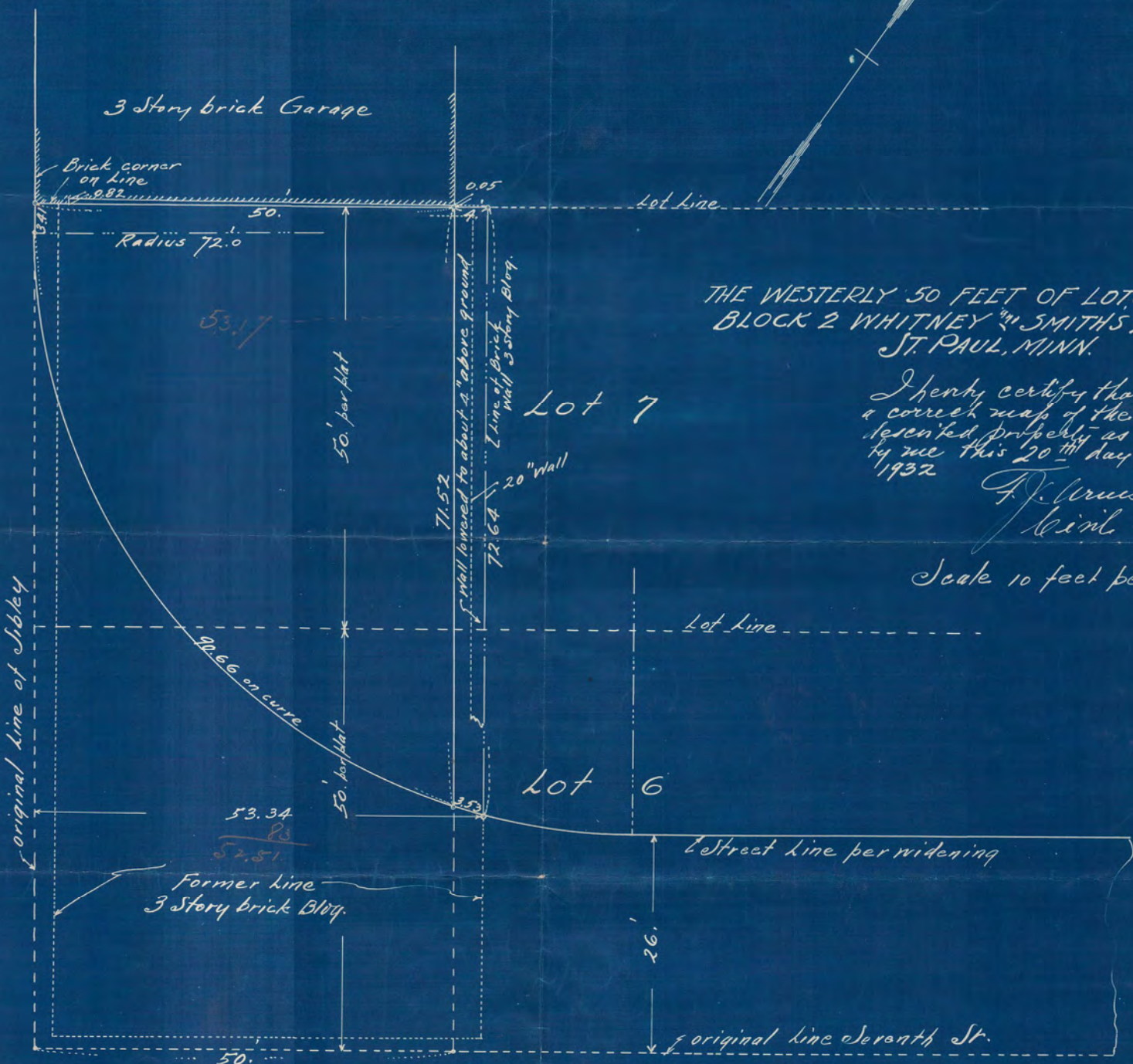


SIBLEY ST.

10 inches = 87 feet

N



THE WESTERLY 50 FEET OF LOTS 6<sup>and</sup> 7  
 BLOCK 2 WHITNEY<sup>and</sup> SMITH'S ADDITION  
 ST. PAUL, MINN.

I hereby certify that this is  
 a correct map of the above  
 described property as surveyed  
 by me this 20<sup>th</sup> day of February  
 1932

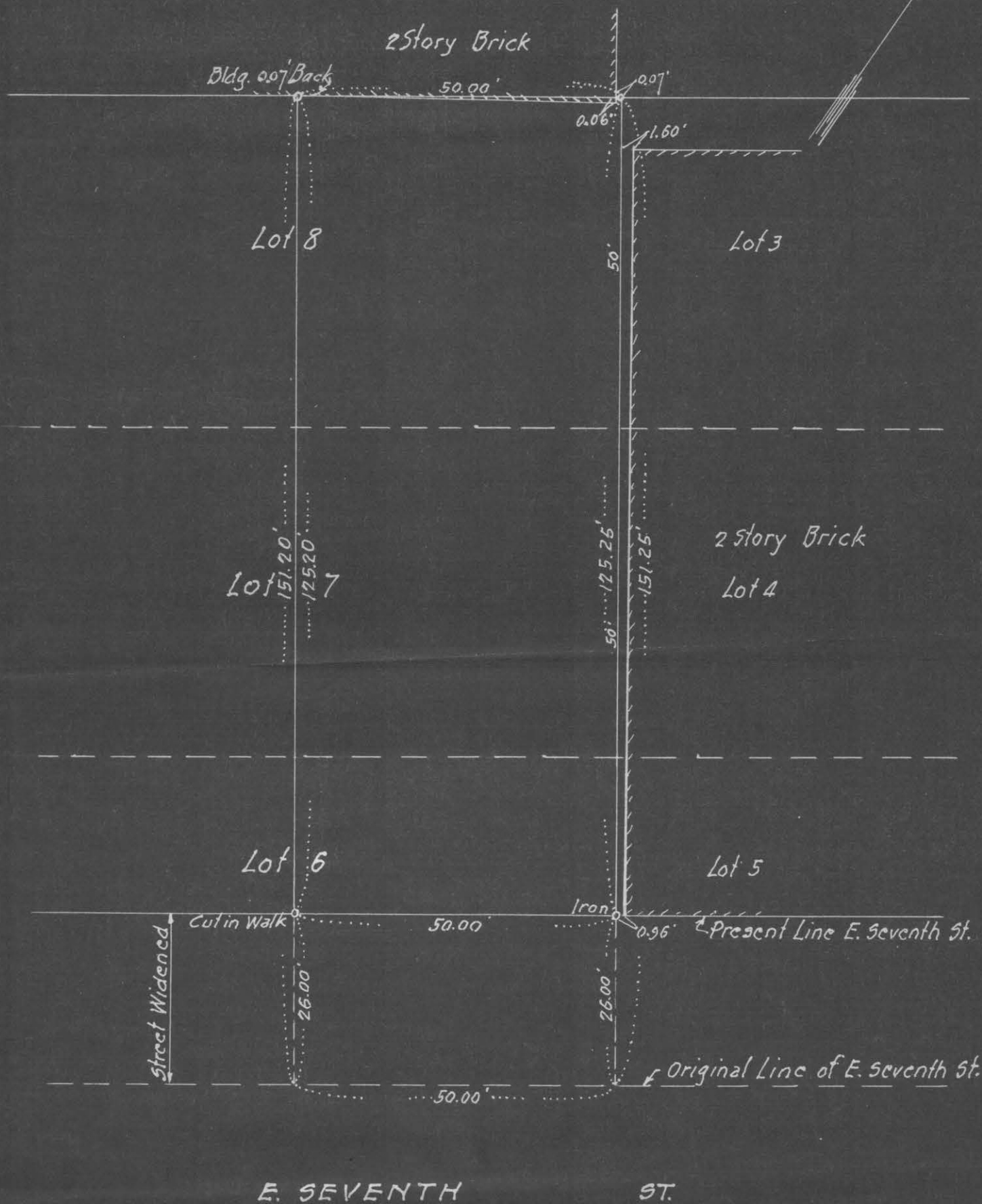
F. Armstrong  
 Civil Engr.

Scale 10 feet per inch

E. SEVENTH ST.

# CERTIFICATE of SURVEY

F. J. ARMSTRONG  
Civil Engineer and Surveyor  
ST. PAUL, MINN.



Scale 1" = 20'

I HEREBY CERTIFY that on the 5th day of September A. D. 1947

I made a survey of the following described property, to-wit: The Easterly 50 Feet of Lots 6-7 and 8, Block 2, Whitney and Smith's Addition to St. Paul, Minnesota.

Subscribed and sworn to before me this \_\_\_\_\_ day of \_\_\_\_\_, 19\_\_\_\_\_

Notary Public.

and the map hereon shown is a true and correct map of said survey and that the improvements thereon indicated are correctly shown.

My Commission Expires \_\_\_\_\_

*F. J. Armstrong* Civil Engineer.

# 6340