

PLAT OF SURVEY

BY  
R. C. WOLFGRAM, REGISTERED LAND SURVEYOR  
ST. PAUL, MINNESOTA

Surveyed Sept., 22, 1948.

I hereby certify that this is a true and correct plat of a survey of the land shown and described hereon, and that monuments or markers indicated hereon have been placed as shown, and that any improvements or physical conditions indicated hereon are as shown.

Plat Scale - 1 in = 30 ft.

• Indicates Iron Mont.

*R. C. Wolfgram*

Description:—

Lots 1, 2 & 3; also that part taken for railroad right of way of  
Lots 4, 29 & 30, Block 2, Hager's Subdivision of Lots 1, 2, 3, 4, 5, 6 & 7  
and 14, 15, 16, 17 & 18 of Walcott's Addition to Cottage Homes.

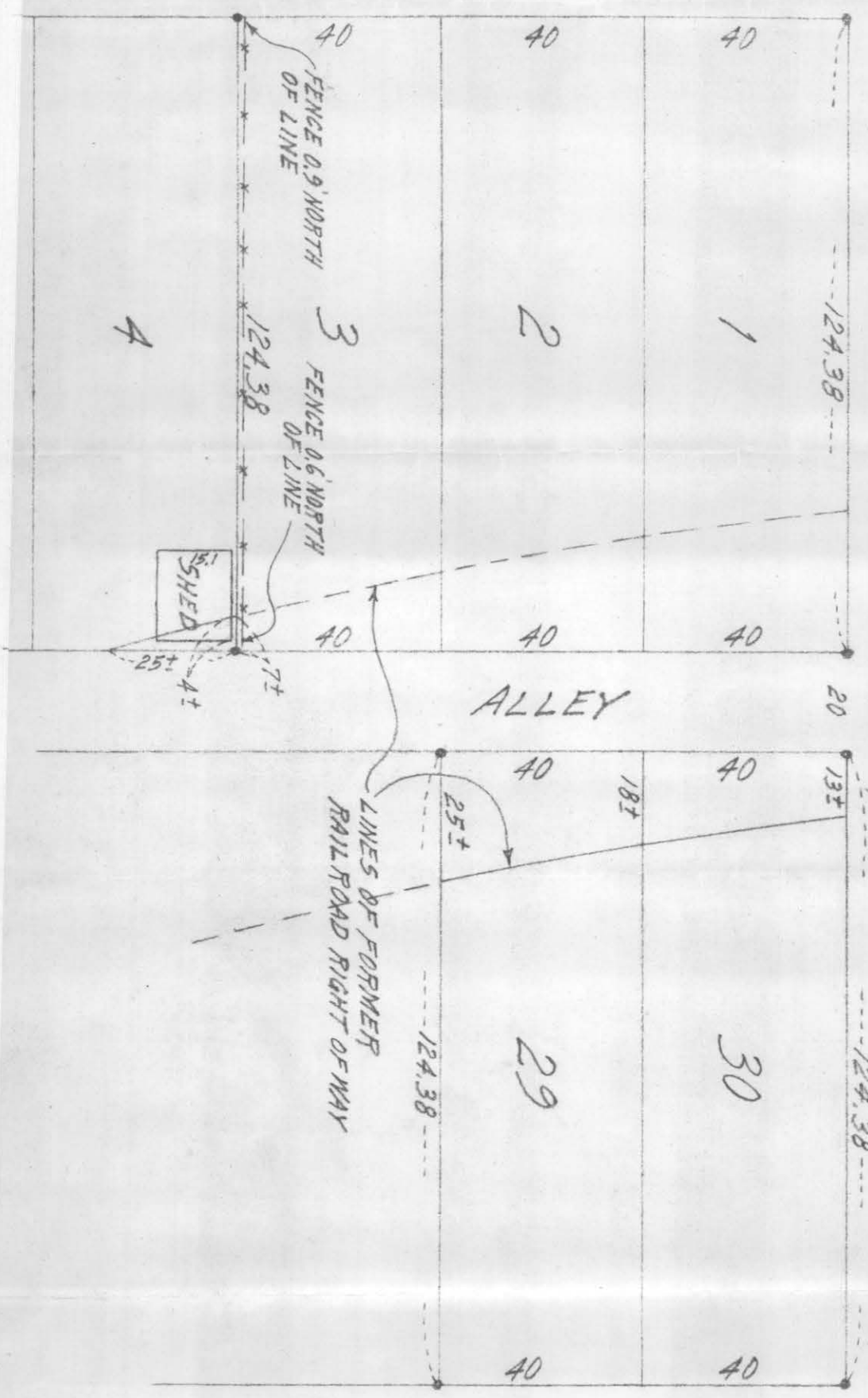
REGISTERED  
MARION  
BART - 3 VON

ST.

W. ARLINGTON

AVE.

WOODBIDGE ST.



# 6254