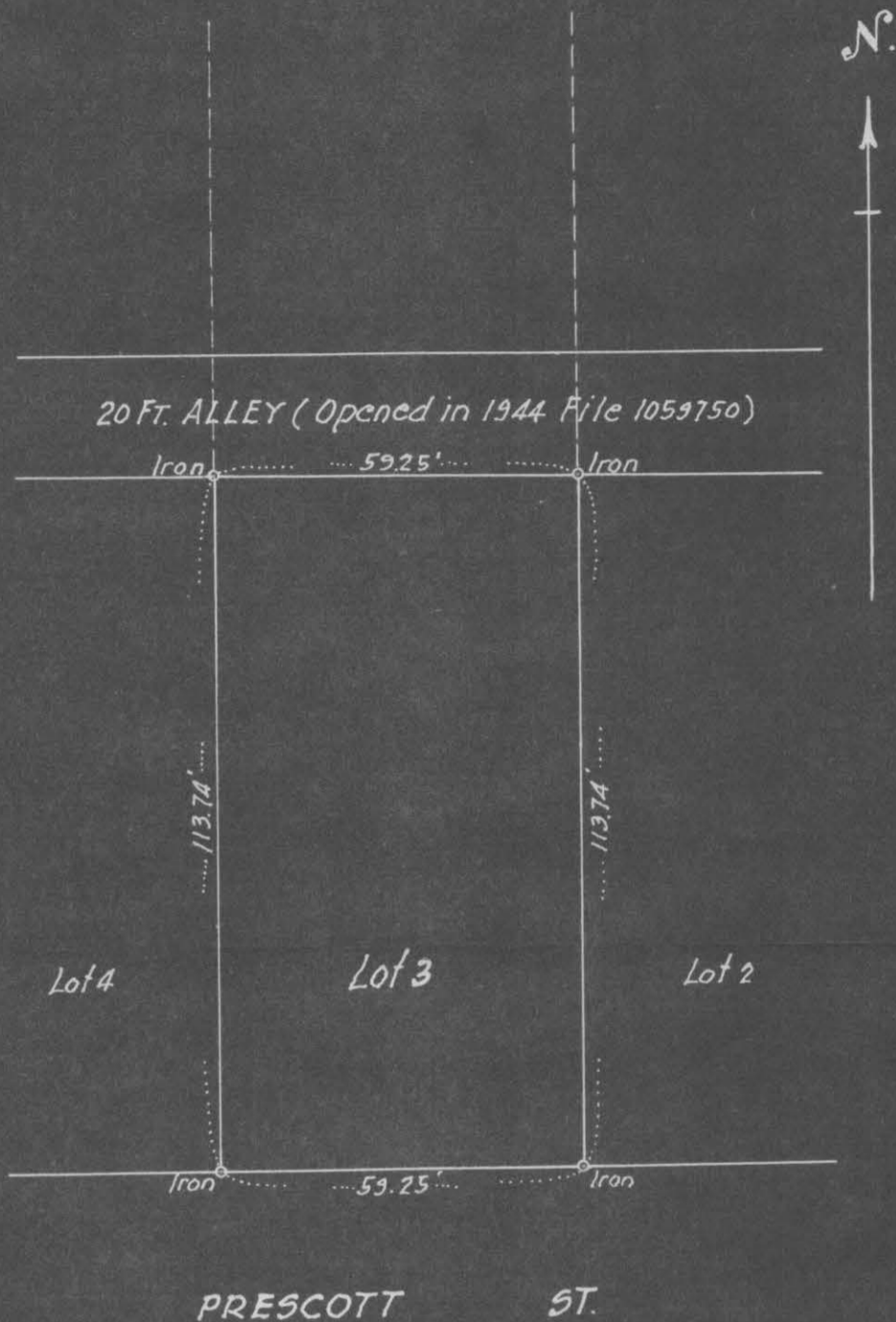


# CERTIFICATE of SURVEY

F. J. ARMSTRONG  
Civil Engineer and Surveyor  
ST. PAUL, MINN.



Scale 1"=30'

I HEREBY CERTIFY that on the 2<sup>nd</sup> day of March A. D. 19 48  
I made a survey of the following described property, to-wit: That part of Lot 3 Block 3 of Woodbury and Case's Addition to St. Paul, Minn. lying South of Alley as opened in 1944 (File 1059750)  
and the map hereon shown is a true and correct map of said survey and that the improvements thereon indicated are correctly shown and there are no encroachments

Subscribed and sworn to before me this  
2<sup>nd</sup> day of March, 1948  
Ernest G. Bach  
Notary Public.

My Commission Expires Oct 29, 1949

F. J. Armstrong Civil Engineer.

#6212