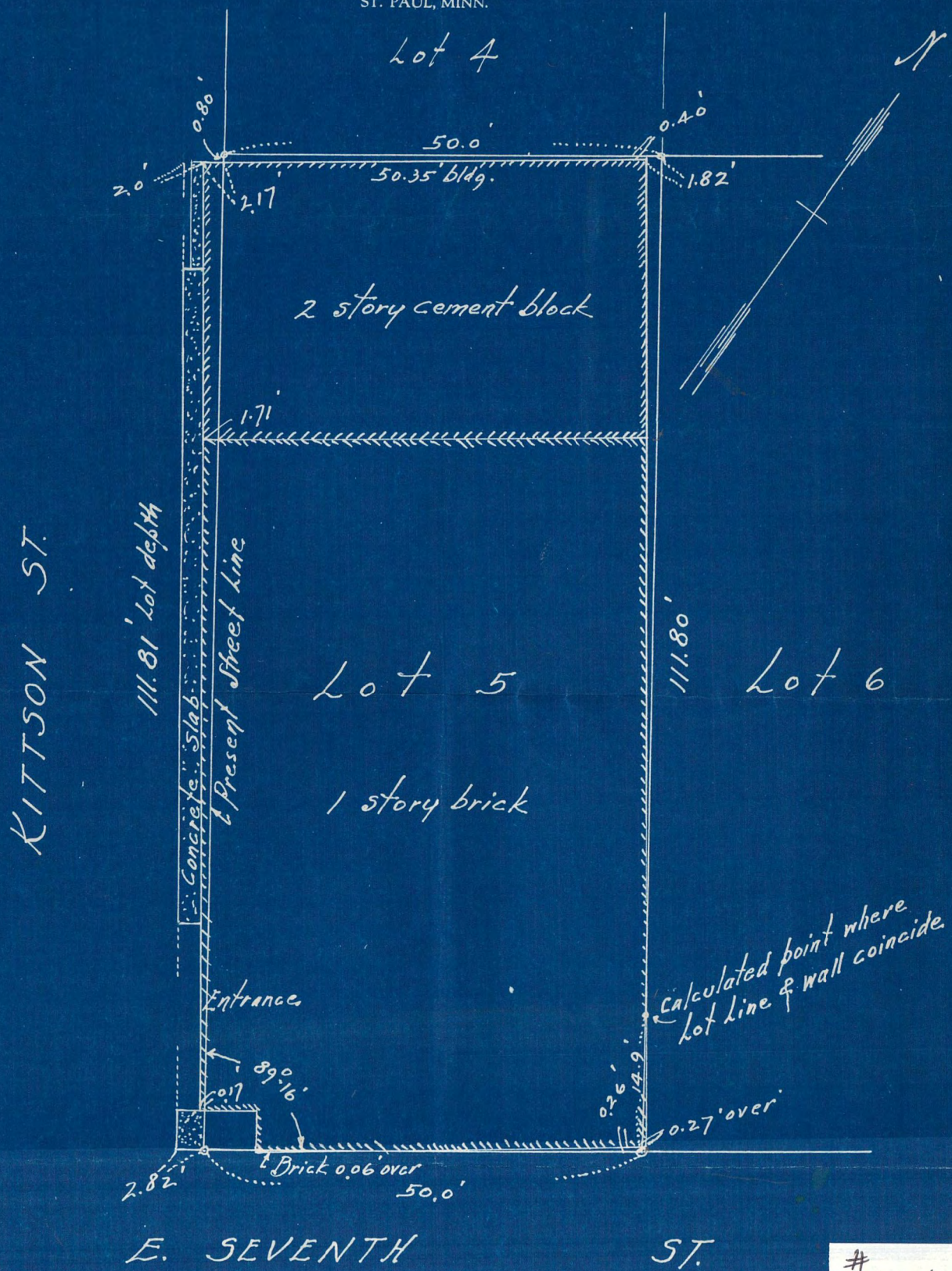


# CERTIFICATE of SURVEY

F. J. ARMSTRONG  
Civil Engineer and Surveyor  
ST. PAUL, MINN.



KITTSON ST.

111.81' Lot depth

Concrete Slab  
& Present Street line

Lot 5

1 story brick

111.80'

Lot 6

E. SEVENTH ST.

# 6143

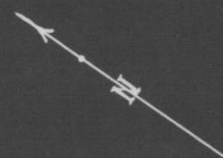
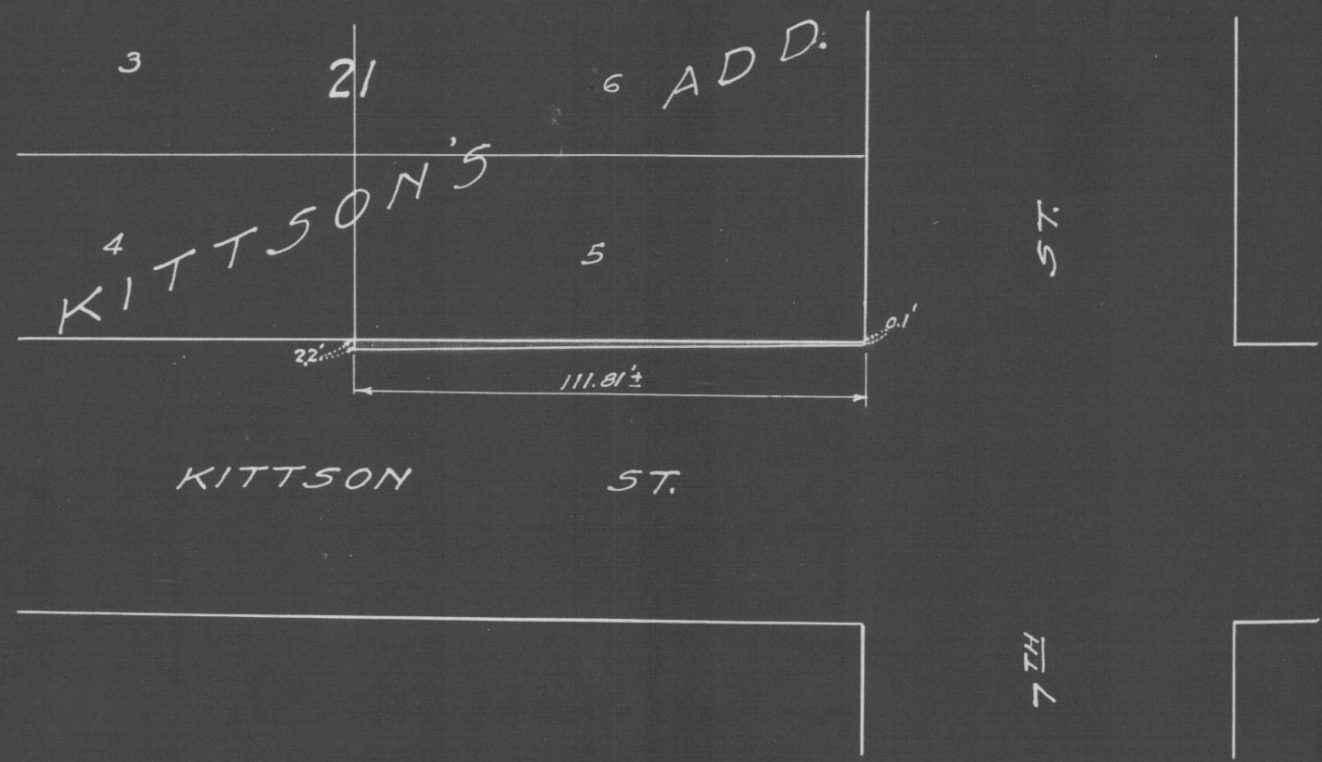
Scale 15 ft. per inch

Subscribed and sworn to before me this 4<sup>th</sup> day of March, 1948  
Richard E. Klam  
Notary Public.

I HEREBY CERTIFY that on the 1<sup>st</sup> day of November, A. D. 1946,  
I made a survey of the following described property, to-wit: Lot 5 Block 21 Kittson's  
Addition to St. Paul, Minn.

and the map hereon shown is a true and correct map of said survey and that the improvements thereon

KITTSOON ST. (POR)  
7<sup>TH</sup> ST. - NWLY 111.  
VACATION  
Bureau of Engineer  
June 9, 1947  
Scale: 1" = 40'



ST.  
111.81 ±  
N

# 614