

DESCRIPTION.

All of Lot 6, in Block 3, in Cruickshank's Garden Lots lying West of the Center Line of Germain Street as now laid out, and all of Lot 7, in Block 3, Cruickshank's Garden Lots save and except the West 50 feet of that part of Lot 7, lying South of the Center Line of East Seventh Street and extended Southward from the South Line of said East Seventh Street all as now laid out and approximately 122 feet to the Center Line of a public Alley as now laid out in said Lot 7, and Lots 7-8-11-12 and 13 Block 8, Denslow's Rearrangement, also Lot 1, Block 10, Denslow's Rearrangement.

Scale 1 inch = 60 feet.

T. J. Welch, Reg. Surveyor.

738 Surrey Ave.

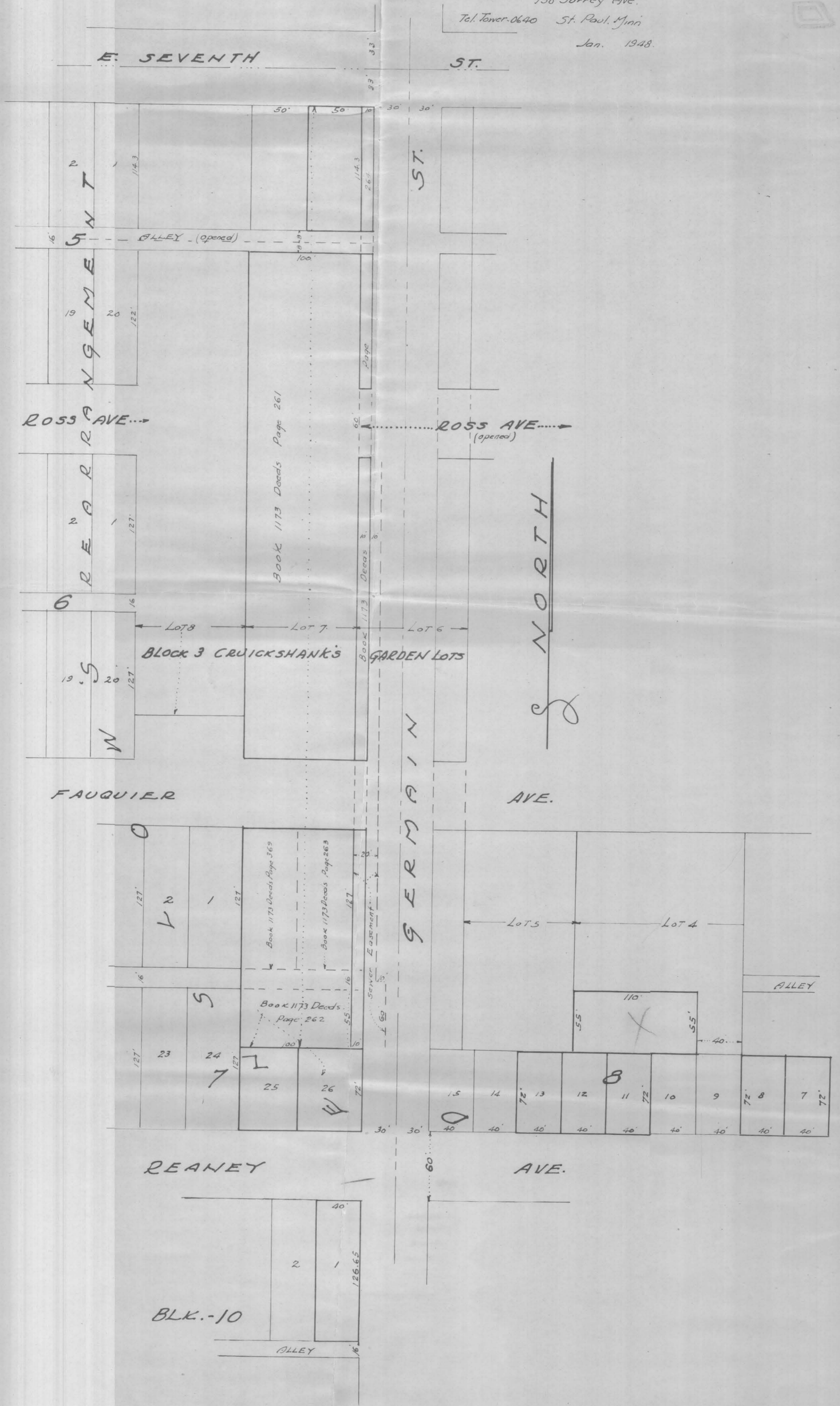
Tel. Tower 0640 St. Paul, Minn.

Jan. 1948.



6141

6141



#6141