

6099

SURVEY OF

Lot 4 except West Seventh Street opening and widening, and that part of Lot 21 which lies Southeasterly of West Seventh St. as widened, both in Block 13, A. Vance Brown's Subdivision of Block 4 and the East 1/2 of Blk. 13 of Stinson, Brown and Ramsey's Addition to St. Paul.

February 18, 1948.

R. H. Wolgram
Registered Land Surveyor.

Scale - 1 in. = 40 ft.

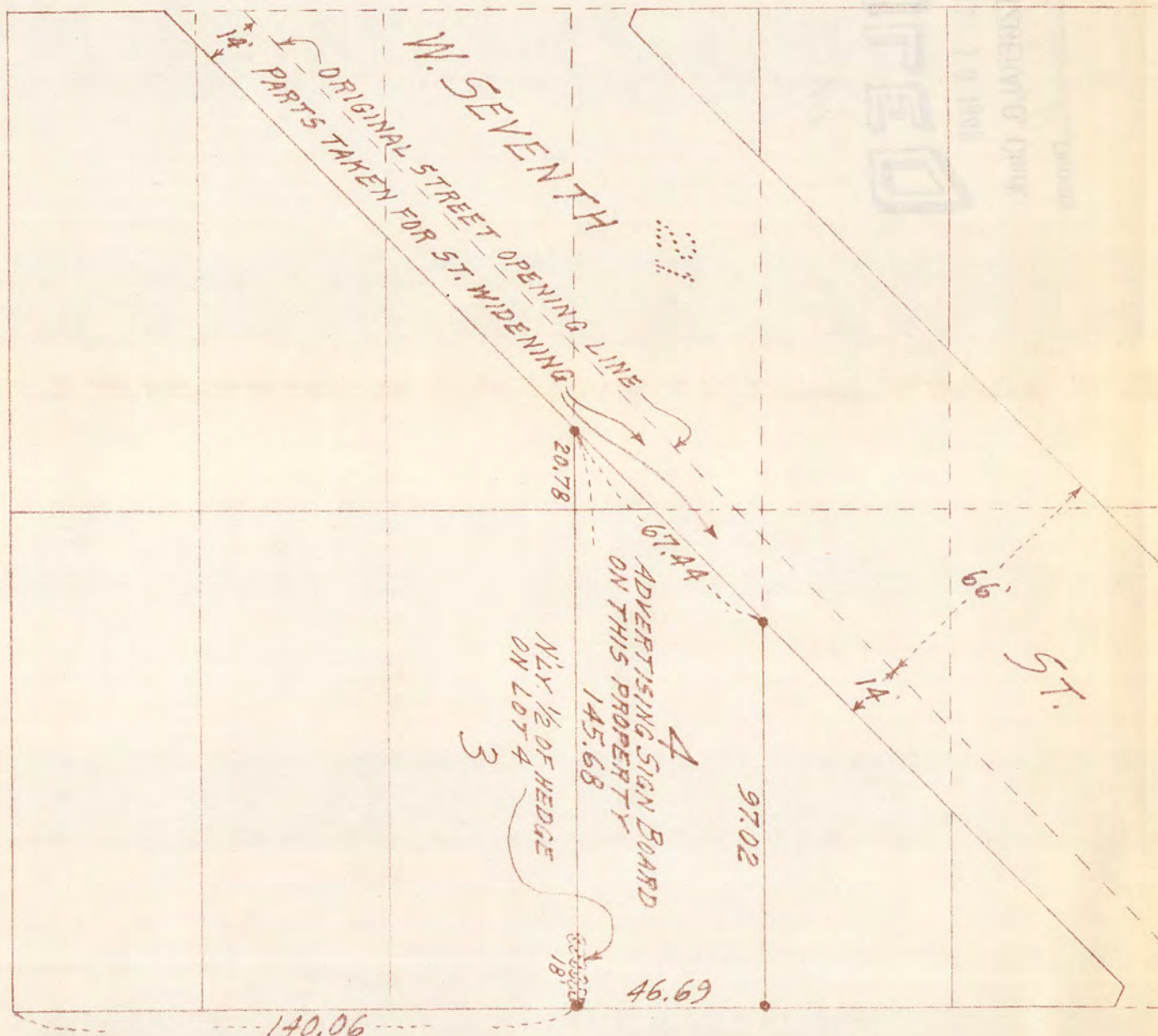
• Indicates Iron.

ERIE

ST.

JEFFERSON

AVE.



DUKE

ST.



#6099