

5846

# ABSTRACT OF TITLE,

Prepared by THE ST. PAUL ABSTRACT COMPANY.

No. 1.

To The Eastern 50 feet of Lots 6 7 & 8  
Block 2. Whitney & Smith's  
Addition to St Paul

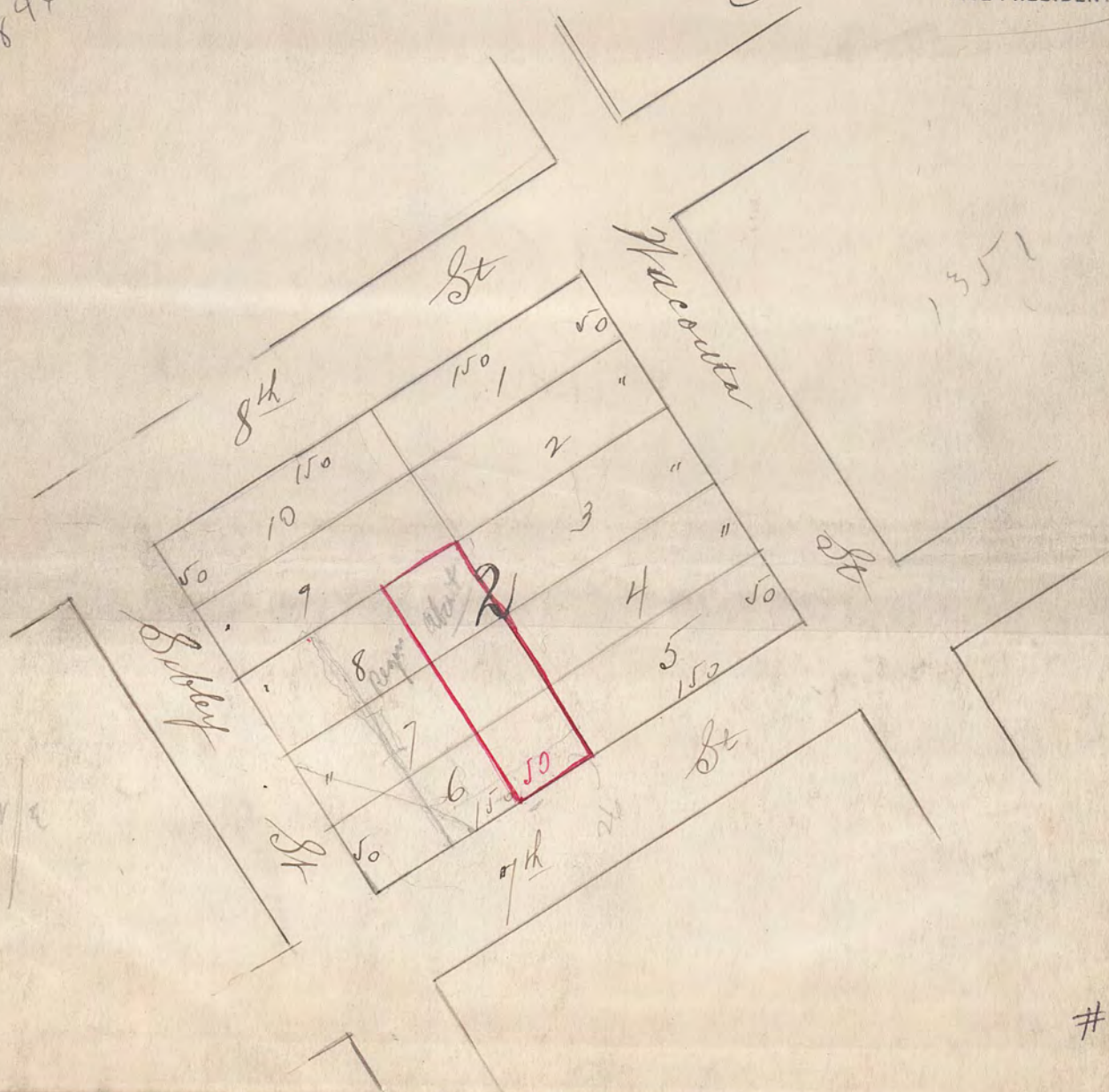
STATE OF MINNESOTA,  
County of Ramsey.

The St. Paul Abstract Company does hereby certify that the following exhibit, consisting of 11 sheets, from 1 to 11 inclusive, each of which bears its Corporate Seal, and 71 entries, from 1 to 71 inclusive, is a true and complete Abstract of Title to the real estate described in No. 1 hereof, as shown by the records in the office of the Register of Deeds in and for said County and State, up to this 9th day of January 1905, at 8 o'clock A. M.

THE ST. PAUL ABSTRACT COMPANY,  
ABSTRACTERS.  
*J. A. Suchman*  
VICE PRESIDENT.

5846

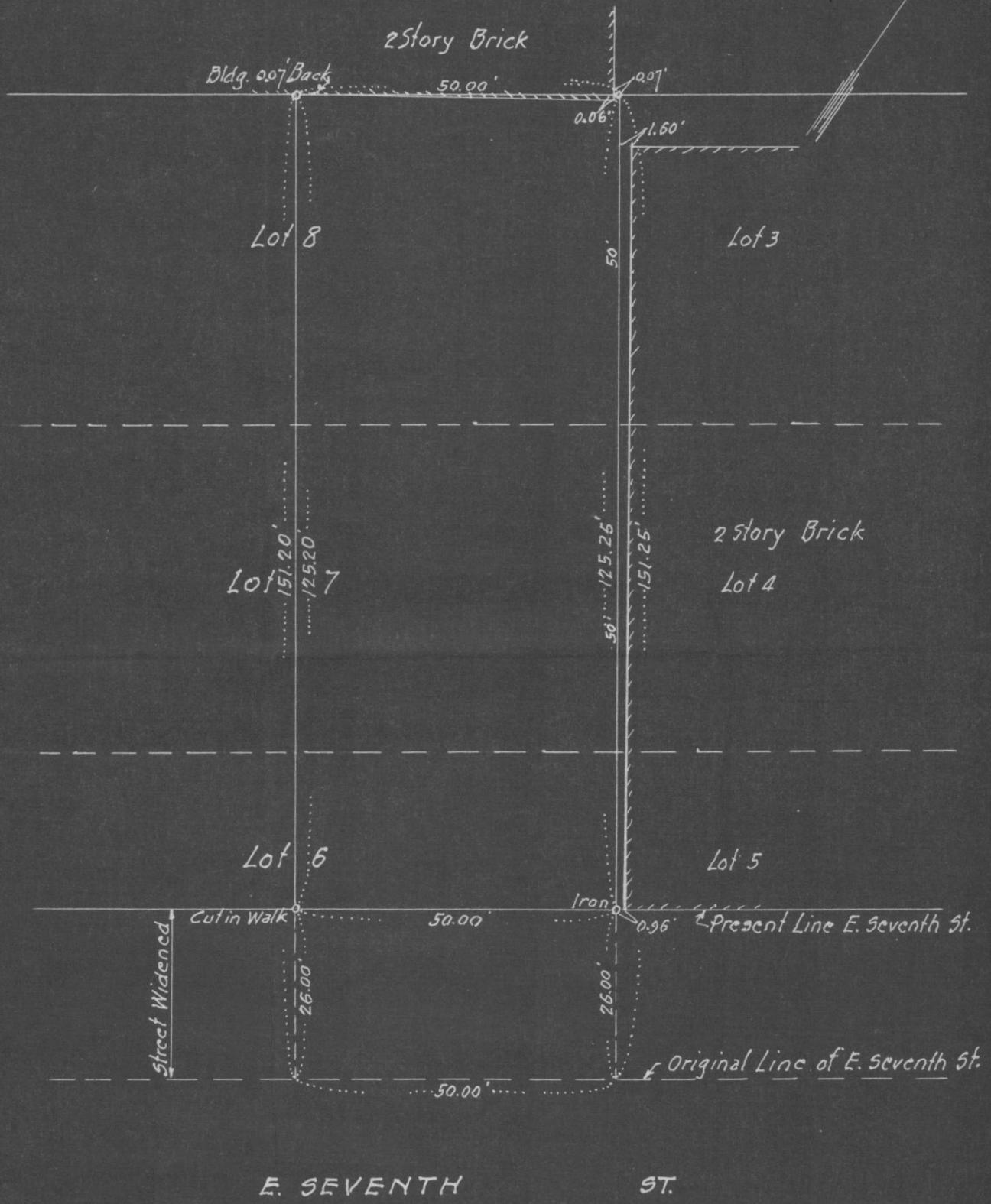
- 2 -



# 5846

# CERTIFICATE of SURVEY

F. J. ARMSTRONG  
Civil Engineer and Surveyor  
ST. PAUL, MINN.



E. SEVENTH ST.

Scale 1" = 20'

I HEREBY CERTIFY that on the 5th day of September, A. D. 1947,  
I made a survey of the following described property, to-wit: The Eastern 50 Feet of  
Lots 6-7 and 8, Block 2, Whitney and Smith's Addition to  
St. Paul, Minnesota.

Subscribed and sworn to before me this  
..... day of ....., 19.....

Notary Public.

and the map hereon shown is a true and correct map of said survey and that the improvements thereon