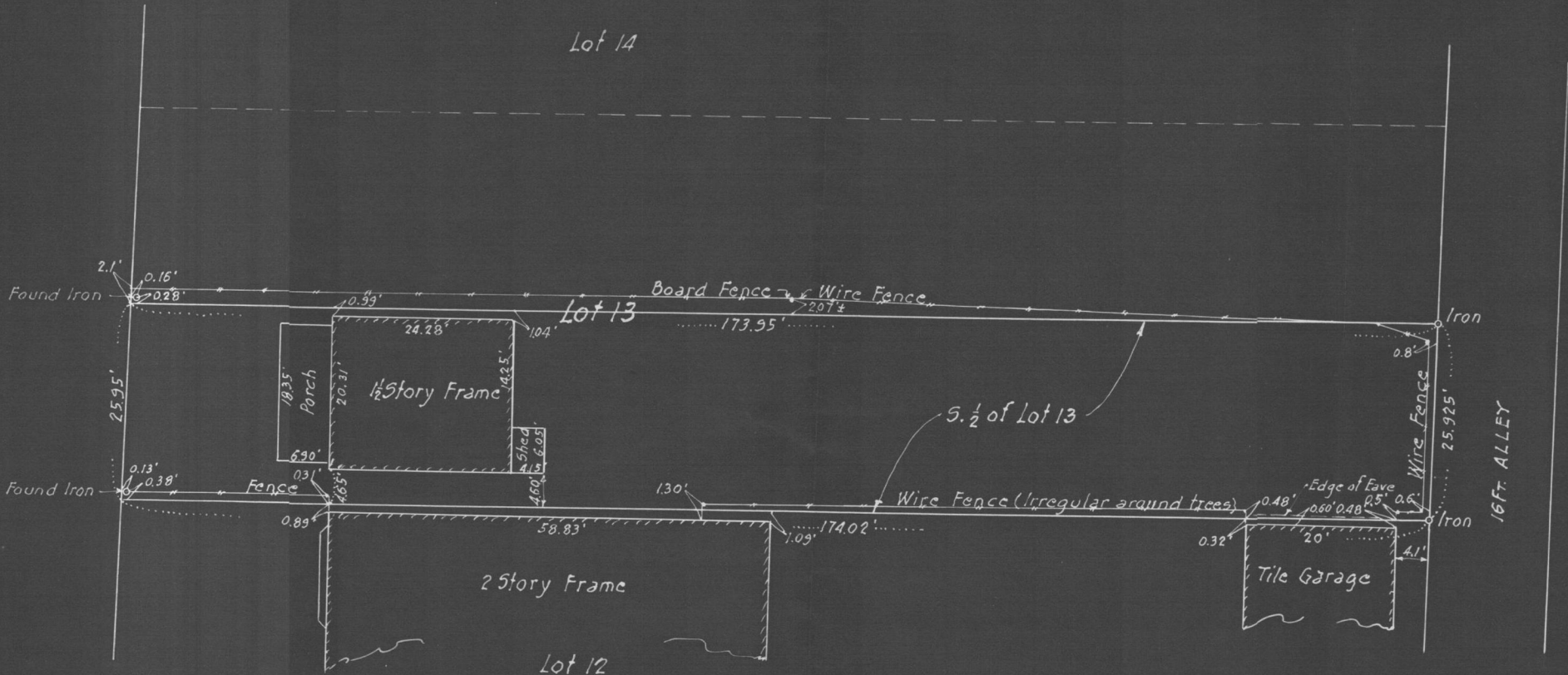


DOUGLAS ST.

Lot 14



Scale 1" = 16'

Subscribed and sworn to before me this 25 day of May, 1947.

Louisa G. Bach
Notary Public

My commission expires Oct 29, 1949

I hereby certify that this map correctly shows the South one-half (1/2) of Lot 13 Block 3 Addition to St. Paul, Minnesota; as surveyed by me this 8th day of April 1947.

F. J. Aronson
Civil Engineer