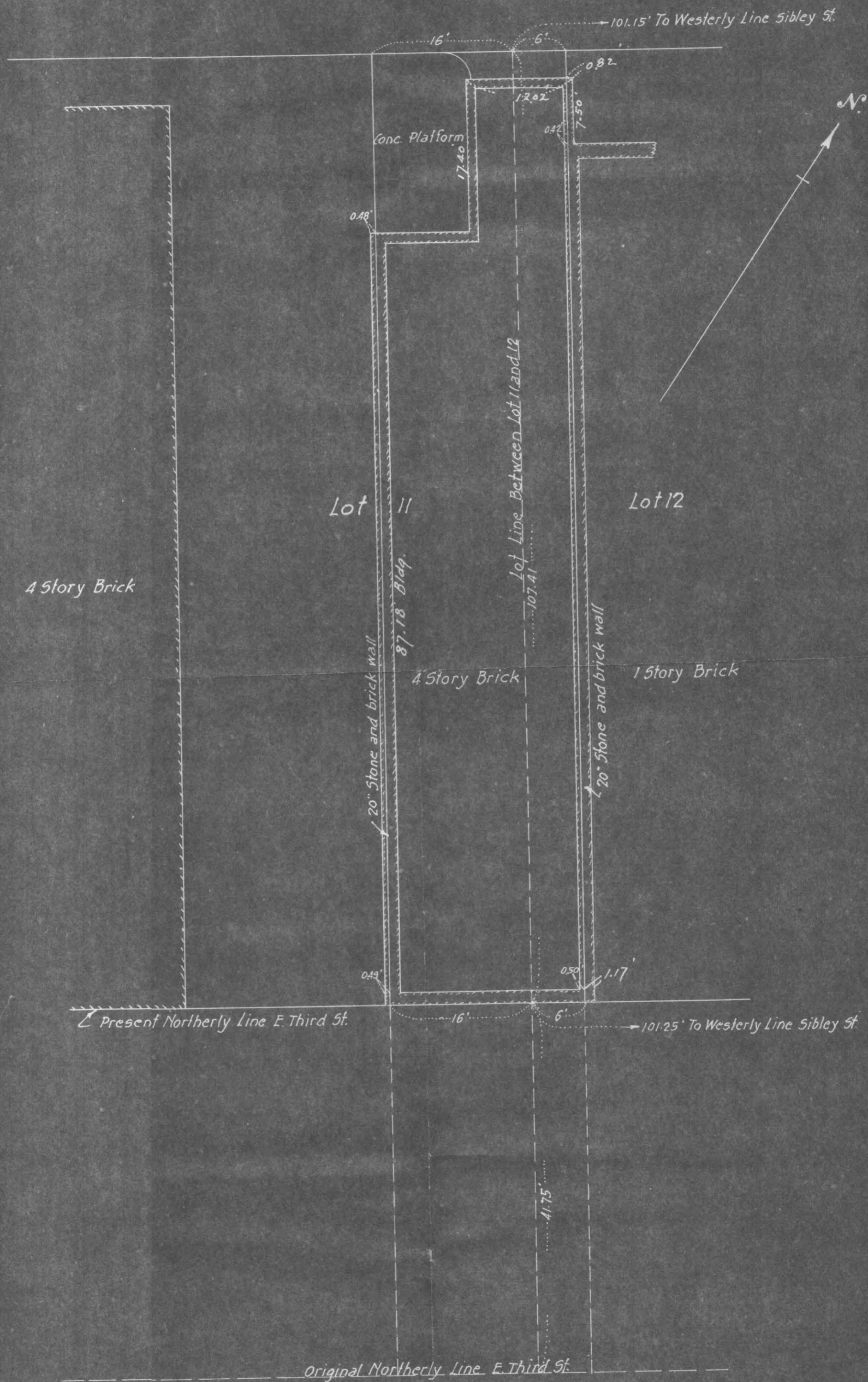


ALLEY



4 Story Brick

Lot 11

20" Stone and brick wall
87.18 Bldg

4 Story Brick

Lot Line Between Lot 11 and 12
107.41

Lot 12

20" Stone and brick wall

1 Story Brick

Present Northerly Line E. Third St.

101.25' To Westerly Line Sibley St.

Original Northerly Line E. Third St.

E. THIRD

ST.

MAP OF SURVEY

OF
EASTERLY 16 FEET OF LOT 11 AND WESTERLY
6 FEET OF LOT 12 BLOCK 27. ST. PAUL PROPER.
Scale 1" = 10'
September, 13th 1946.

Note:- The line between Lots 11 and 12 based on
pro-rated distance, Sibley to Jackson.

F. J. Armstrong - Civil Eng.

5516