

5430

SURVEY OF

The North one-half (N. 1/2) of Lots thirteen (13) and fourteen (14), in Block two (2), Simonitsch's Subdivision of Blocks 11 & 14 of Hyde Park, except part taken for Lexington Avenue.

*R. L. Wolfgang*

Registered Land Surveyor.

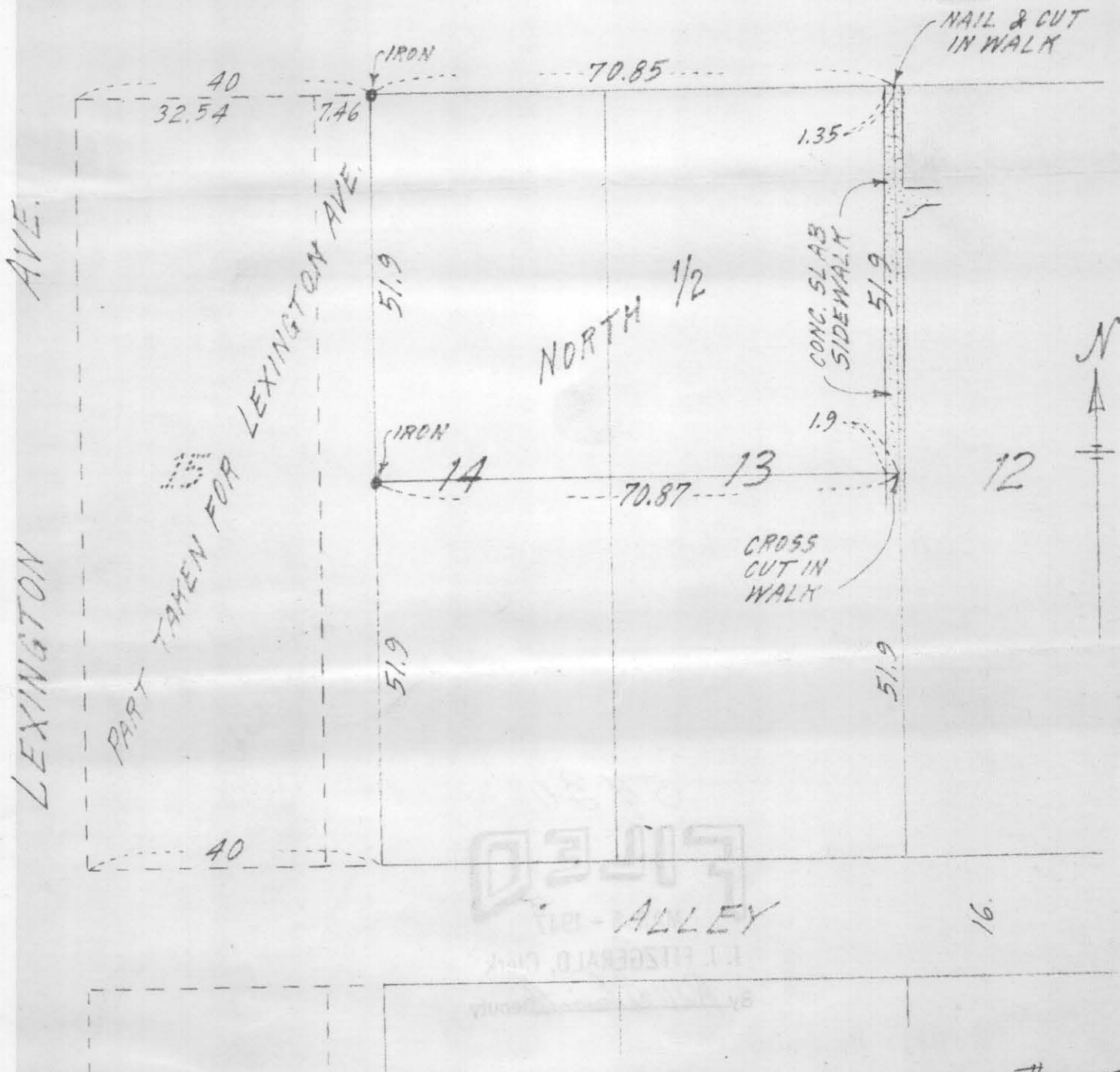
Nov., 14, 1946.

Scale - 1 in. = 20 ft.



SHERBURNE

AVE. 66.



#5430