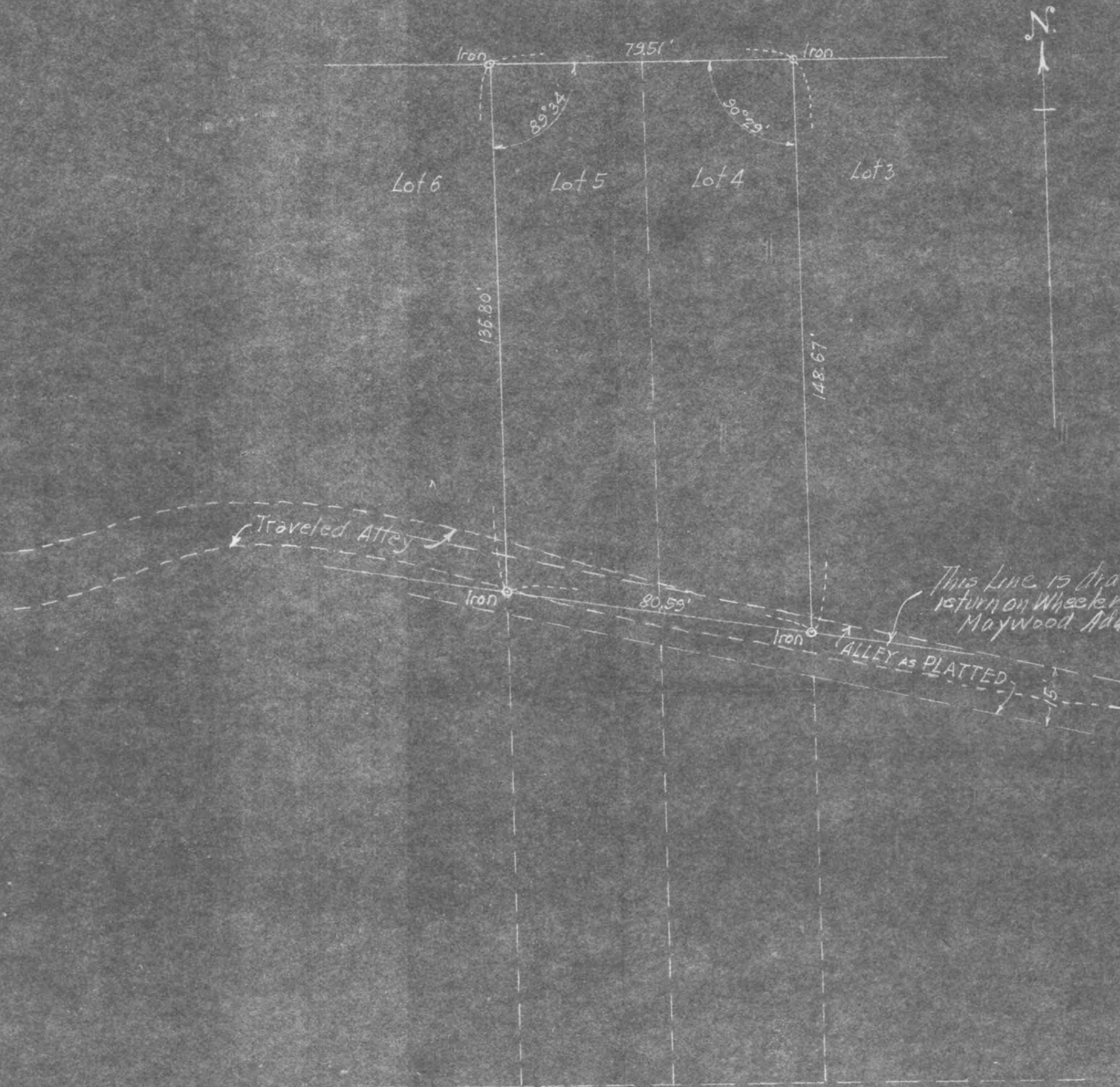


VAN BUREN

ST.



This line is drawn from north line of Alley
return on Wheeler to S.E. Corner of Lot 1 Block 3
Maywood Addition.

PLAT OF SURVEY OF LOT 4 AND 5 BLOCK 2
FOREST LAWN ADDITION, ST. PAUL, MINN.
Scale 1" = 30'

May, 1st 1946.

F. J. Armstrong, Civil Engr.

5368