

A- The S. $\frac{1}{2}$ of that part of Lot 2, Plan of Prospect Hill lying E. of a line drawn from a point on N. line of said Lot 2 distant 295.63 ft. from N.W. cor. thereof to a point on S. line of said Lot 2 distant 295.39 ft. from S.W. cor. thereof; except the S. 180 ft. of said S. $\frac{1}{2}$.

B- The S. 180 ft. of that part of Lot 2, Plan of Prospect Hill lying E. of a line drawn from a point on N. line of said Lot 2 distant 295.63 ft. from N.W. cor. thereof to a point on S. line of said Lot 2 distant 295.39 ft. from S.W. cor. thereof; except $\frac{1}{4}$ acre in square form adjacent to W. line of Prospect St. (now Fulham St.) and adjacent to S. line of said Lot 2.

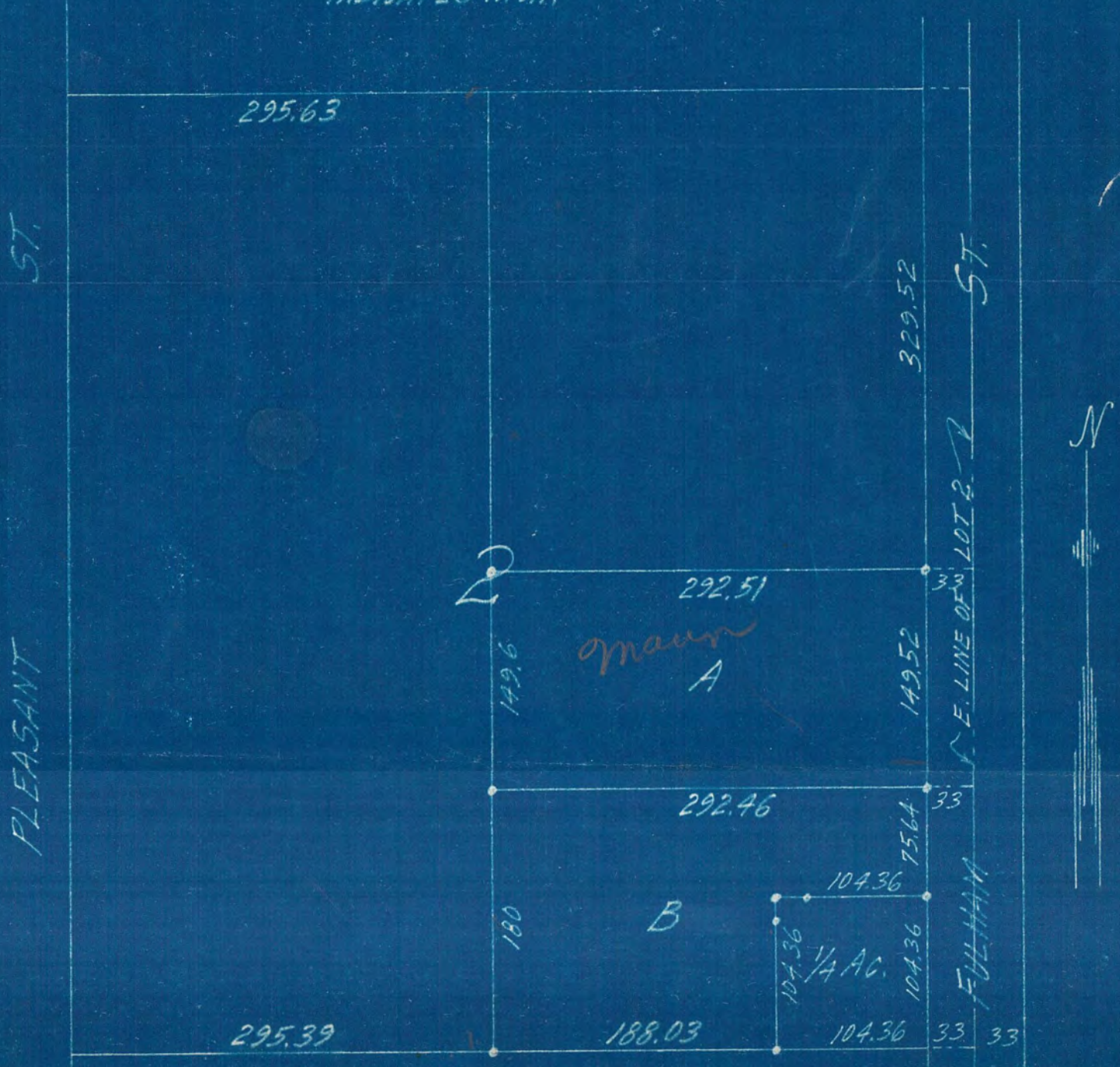
JULY 1943.

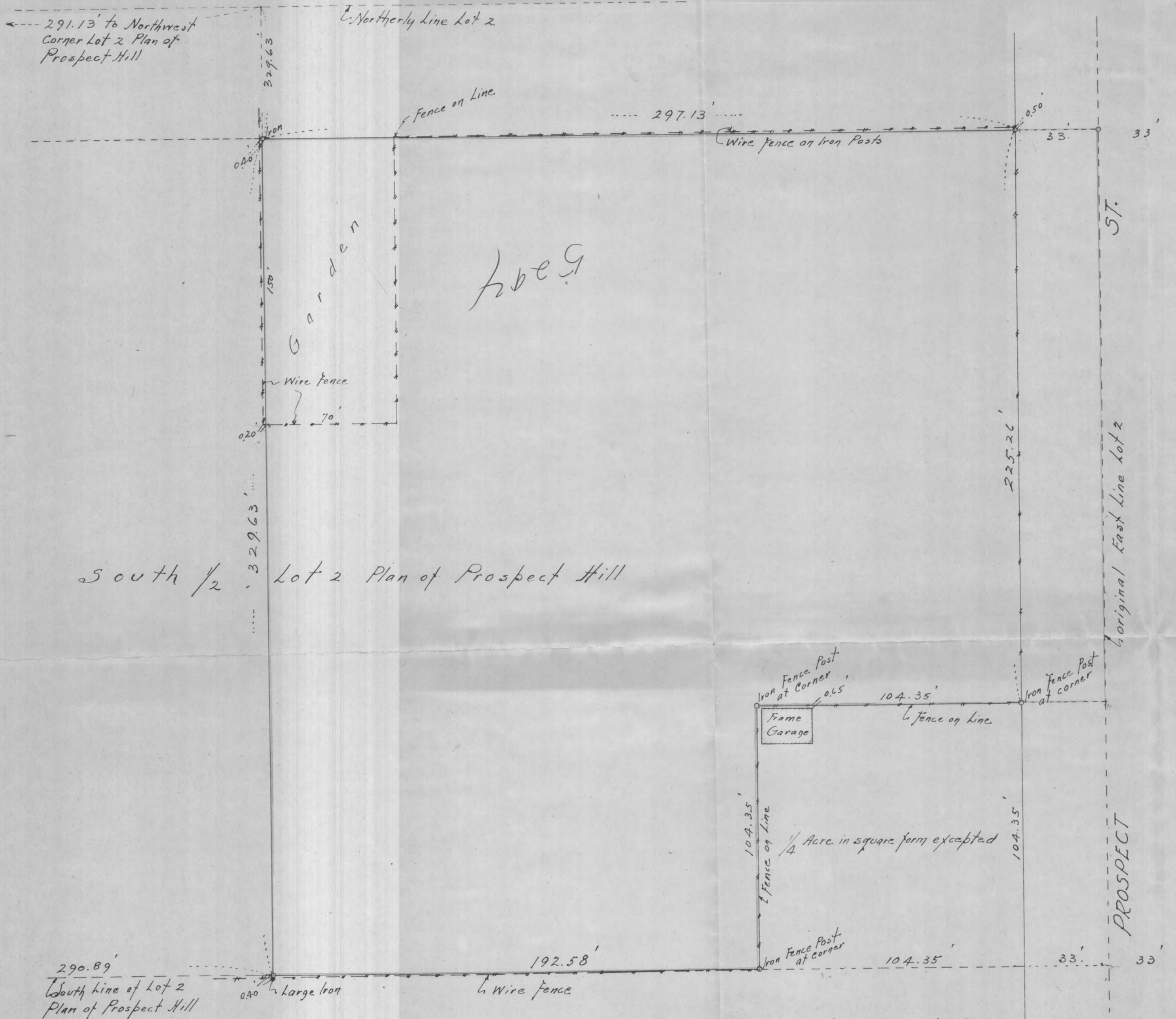
W. H. Hoffman

REGISTERED SURVEYOR.

◦ INDICATES IRON.

20
Dubs
Hogan





I hereby certify that this plat is a true and correct plat of that parcel of Land situated in Plan of Prospect Hill described as follows: The South 1/2 of that part of Lot 2, Plan of Prospect Hill lying Easterly of a line drawn from a point in the North Line of said Lot 2, 291.13 feet from the Northwest corner thereof, to a point in the South Line of said Lot 2, 290.89 feet from the Southwest corner thereof except 1/4 Acre in a square form lying west of the West Line of Prospect Street in the Southeast corner of said Lot 2 particularly described in 779 Deeds page 503 and subject to the rights acquired by the County of Ramsey for Highway purposes according to the plat thereof on file and of record in the Office of the Register of Deeds in and for Ramsey County, Minnesota, as surveyed by me the 30th day of September 1946

F. J. Armstrong - Civil Engr
Oct. 4th 1946

Subscribed and sworn to before me this ... day of ... 1946

Notary Public, Ramsey Co Minn.
My Commission Expires ...

#5294

4-741

4-741