

5170

ABSTRACT OF TITLE

MADE BY OFFICIAL OFFICE OF RAMSEY COUNTY

No. 1 _____ TO _____

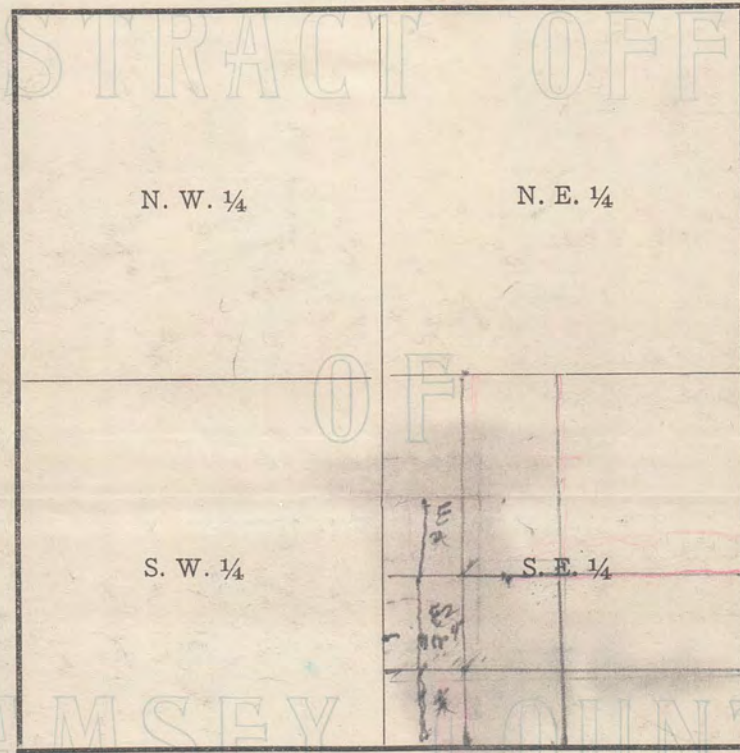
Southwest 1/4 of Southeast 1/4 of Section 16, Town 28, Range 23.

OFFICIAL

Premises described in caption are located in the SW 1/4 of SE 1/4

of Section Number 16 Township Number 28 North of
Range Number 23 West of the Fourth Principal Meridian.

SECTION



No. 2

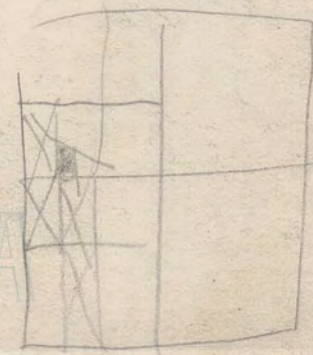
Old Time Surveyor's Measure

- $7 \frac{92}{100}$ inches make 1 Link.
- 100 Links, or 66 feet, 1 Chain.
- 3 feet, 1 Yard.
- $5 \frac{1}{2}$ yards or $16 \frac{1}{2}$ feet, 1 Rod or Pole.
- 4 Rods, 1 Chain.
- 80 Chains (5280 feet) 1 Mile.

RAMSEY COUNTY

No. 3

MINNESOTA



5170