

CERTIFICATE OF SURVEY

FROM THE OFFICE OF

P. R. McLAGAN

217 Dakota Avenue, West St. Paul, Minn.

MINNESOTA REGISTERED LAND SURVEYORS

I Hereby Certify that this plat shows a survey made by me of the property described on this plat, and that the corners are correctly placed as shown, and that all locations, encroachments, etc., have been correctly shown.

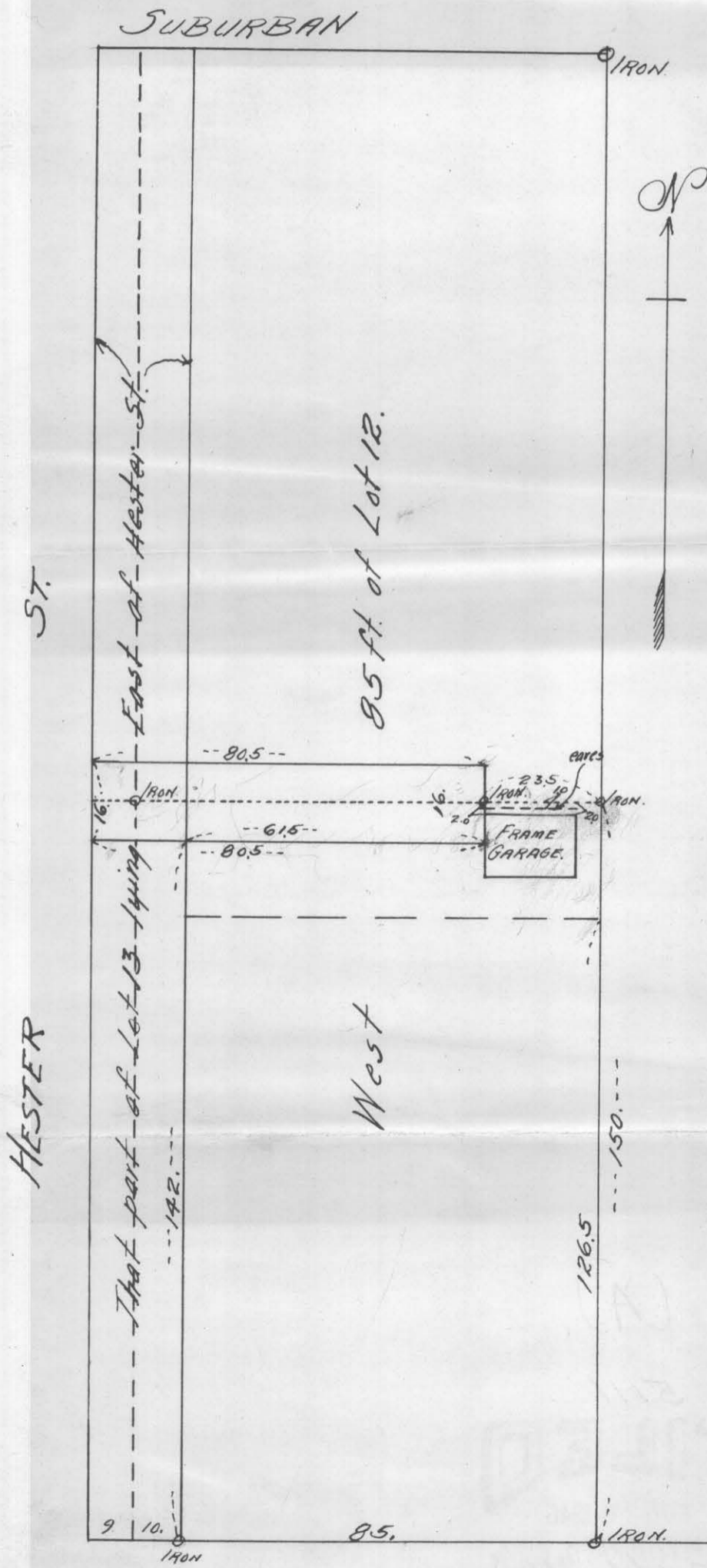
P. R. McLAGAN

SURVEYED FOR *Chas. Kidder.*

BY *P. R. McLagan.*

DATE *June 23rd 1936.*

SCALE *30 ft. per inch.*



Commencing at a point 61.5 ft. East of the west line and 142 ft. North of the south line of Lot 12 Block 30 Suburban Hills Add., thence North 16 ft., thence West 80.5 ft. to the east line of Hester St., thence South 16 ft., thence East 80.5 ft. to place of beginning.

BURNS AVE.

5111

I hereby certify to having surveyed
Lots 12 & 13 Block 30 Suburban Hills and
made the locations as shown hereon and that
this plat is a correct representation of said
survey.

Paul R. McLaughlin

Part of
LOTS 12 & 13, SUBURBAN HILLS
BLOCK 30

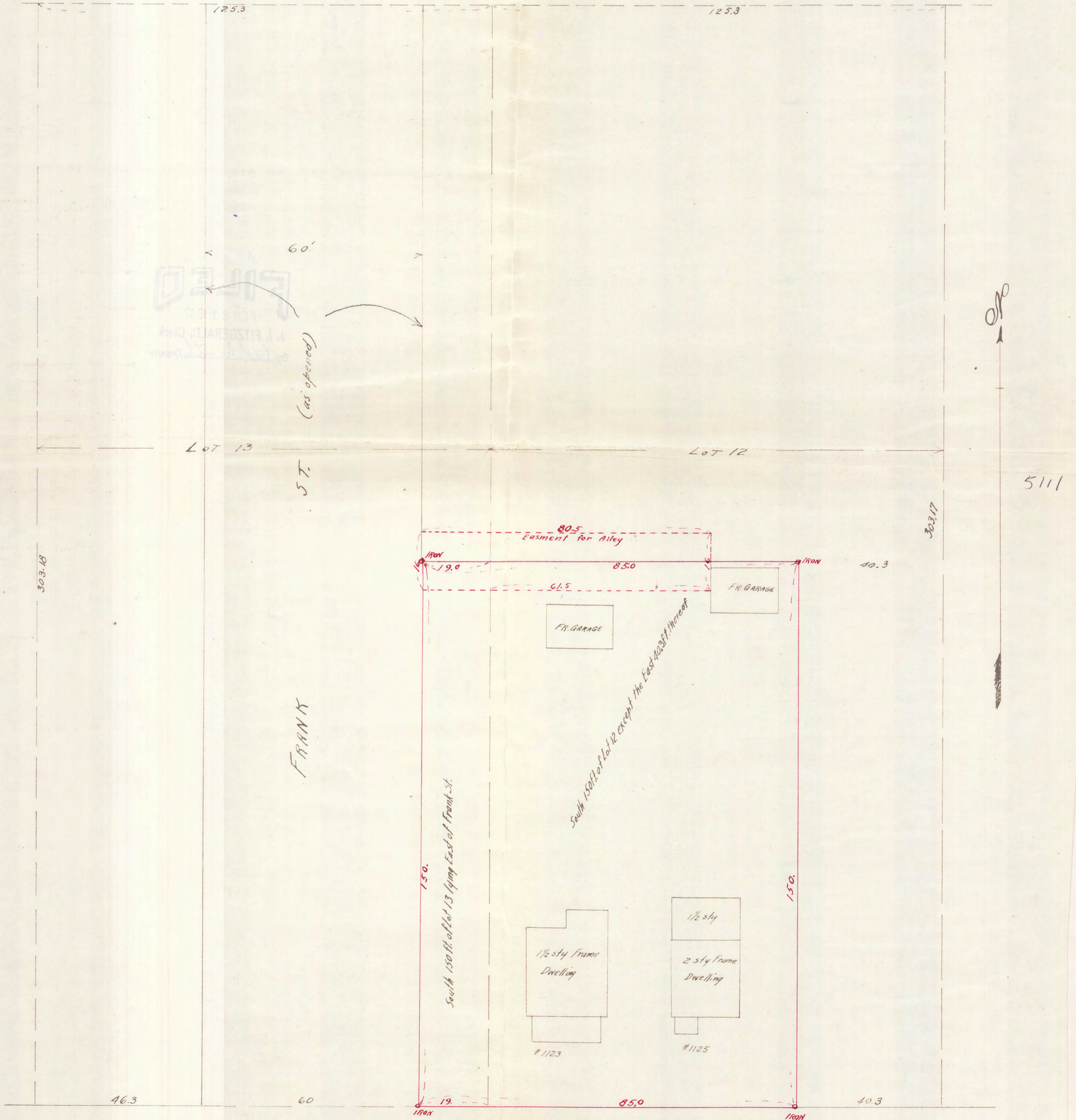
SURVEYED FOR
CAROLINE A. KIDDER

By
PAUL R. McLAGAN
Minnesota Registered Land Surveyor.

Scale 20ft. per inch

October 19, 1946.

SUBURBAN AVE.



BURNS AVE.

5111