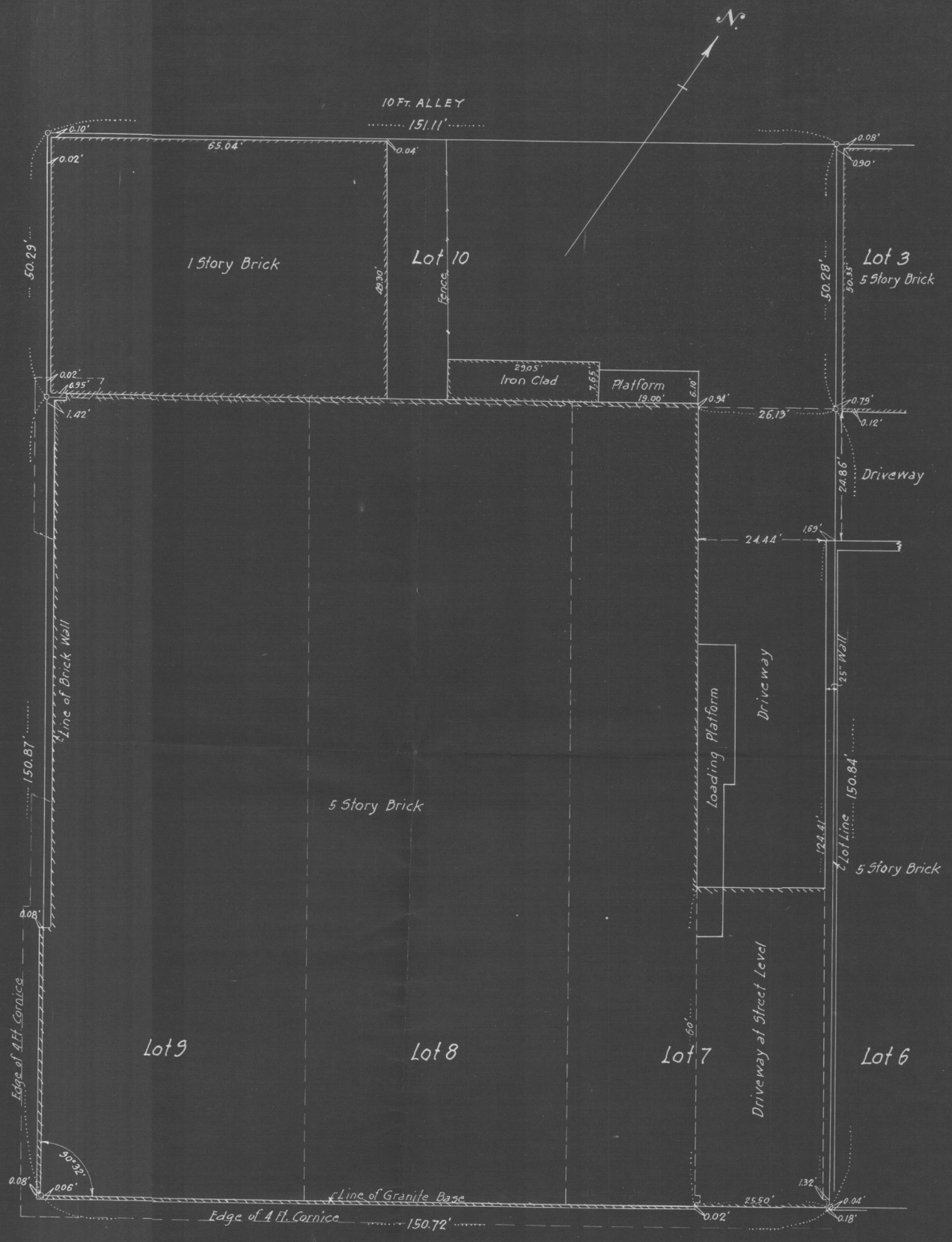


SIBLEY ST.

SIBLEY



E. SIXTH

ST.

Scale 1" = 15'

Subscribed and sworn to before me
 this 10th day March 1947.
Arvona G. Beach
 Notary Public, Ramsey County, Minn.
 My commission expires Oct 29, 1949

I hereby certify that this diagram correctly represents
 Lots 7-8-9 and 10 in Block 7 of Whitney and Smith's
 Addition, St Paul, Minn. as surveyed by me this
 10th day of March 1947.

J. J. Prastrow
 Civil Engr

Note: Original Plat shows Lots 50 ft.
 frontage and 150 ft. depth.

5103