

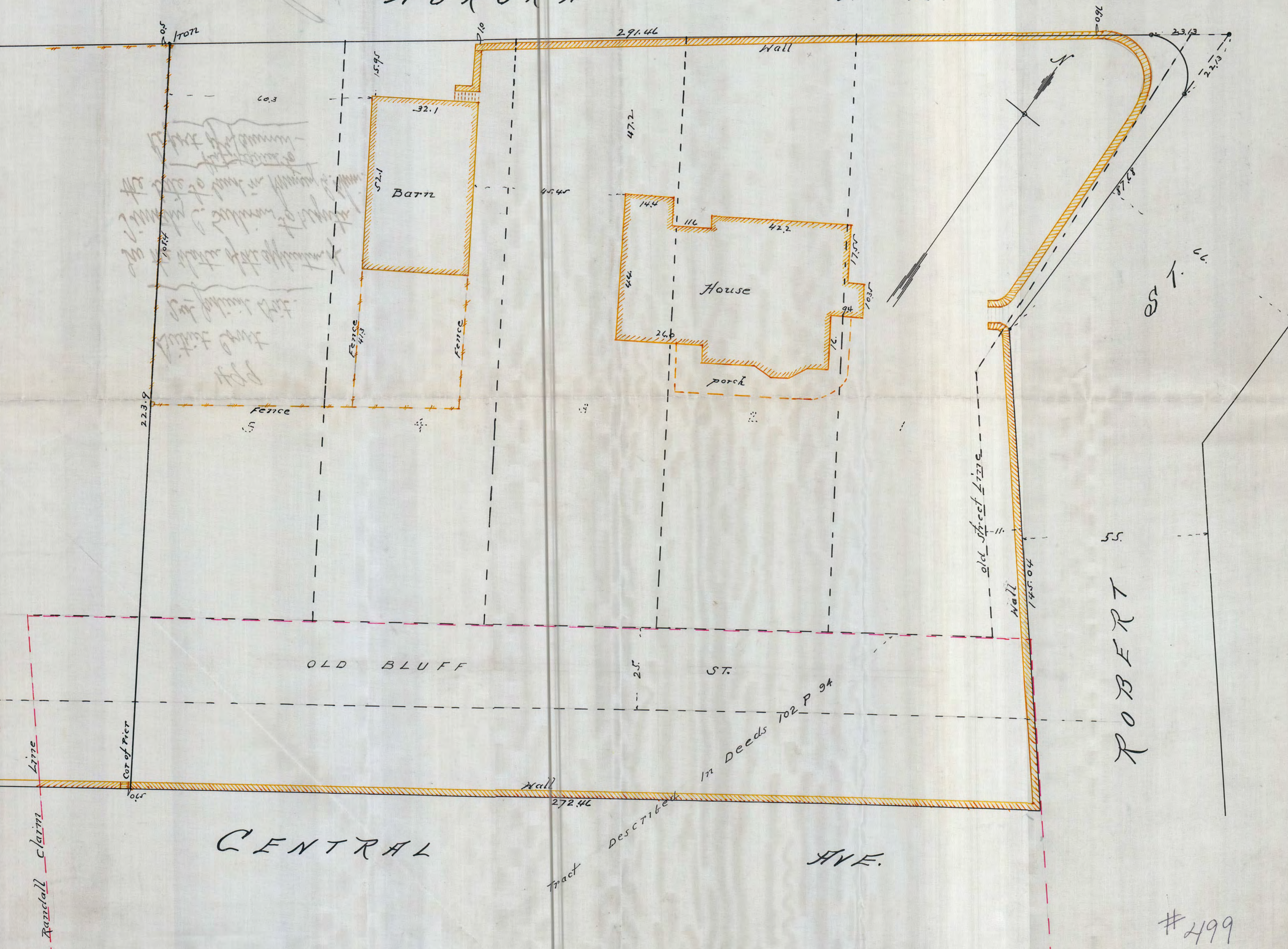
SURVEY OF LOT 1, BLOCK 1, CENTRAL PARK.

Scale 20 Feet pr. inch.

J. Armstrong C.E.
April 1907

AURORA AVE.

AVE.



Handwritten notes:
The Barn is 32.1 feet wide and 52.1 feet long.
The House is 47.2 feet wide and 42.2 feet long.
The porch is 26.6 feet wide.
The fence is 47.3 feet long.

ROBERT S.

#499