

# SUBDIVISION OF BLOCKS 17 AND 23 WOODLAND PARK

SURVEY of  
North 29.4 ft. of the West 5.2 ft. of Lot 4 and all of Lot 5 and 6, Block 17  
scale 1 inch = 20 ft.

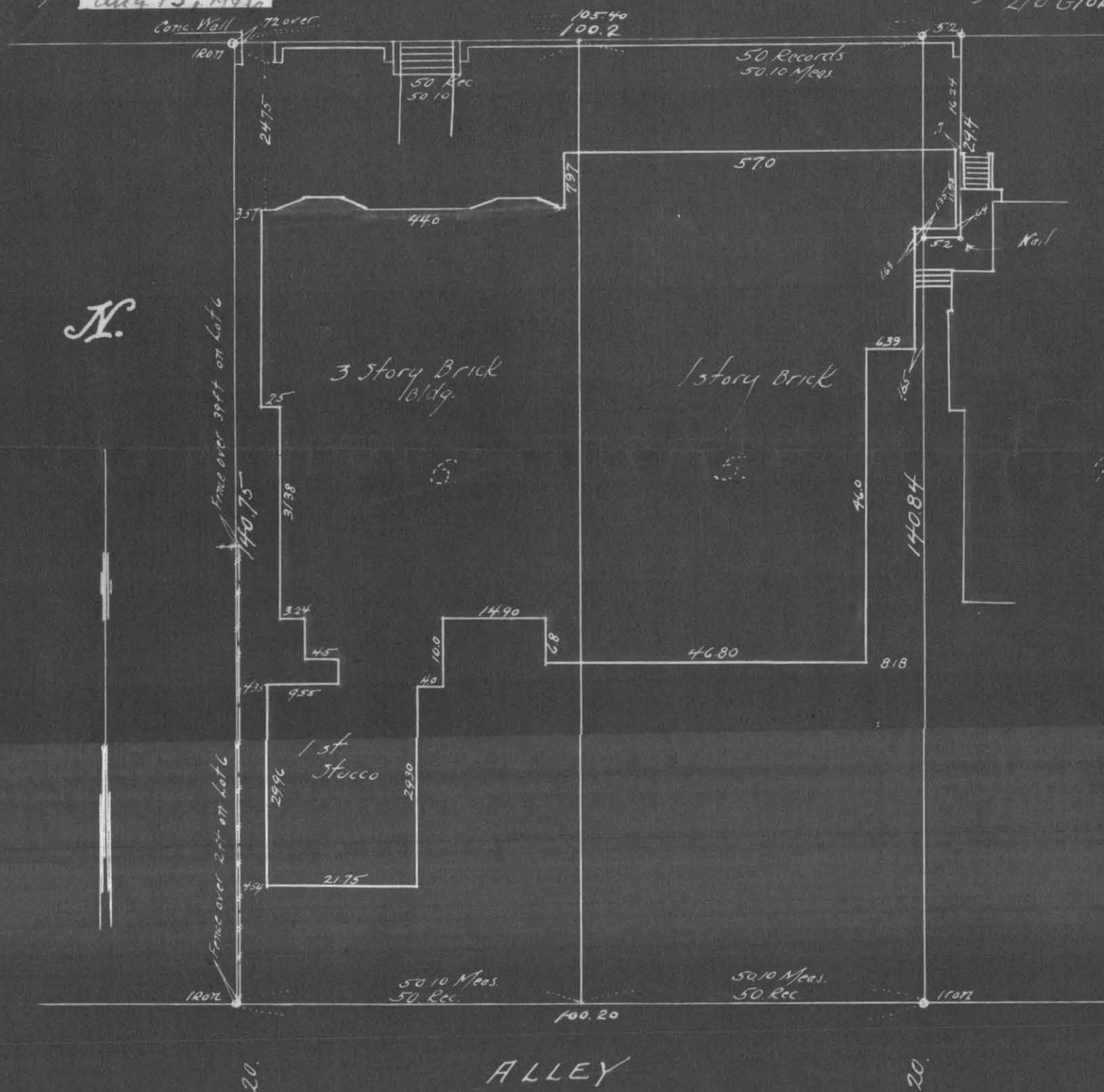
Subscribed and sworn to before  
me this 17 day of Nov 1944

C. M. G. Gantz  
Notary Public, Ramsey Co. Minn.  
My Commission Expires  
Aug 15, 1946

**HOLLY AVE.**

St. Paul, Minn. Oct. 17, 1944  
I certify to having surveyed the  
above described property and  
all distances and locations as hereon  
shown are correct

William E. Federman  
Reg. Surveyor No. 2154  
210 Globe Bldg



#  
4726