

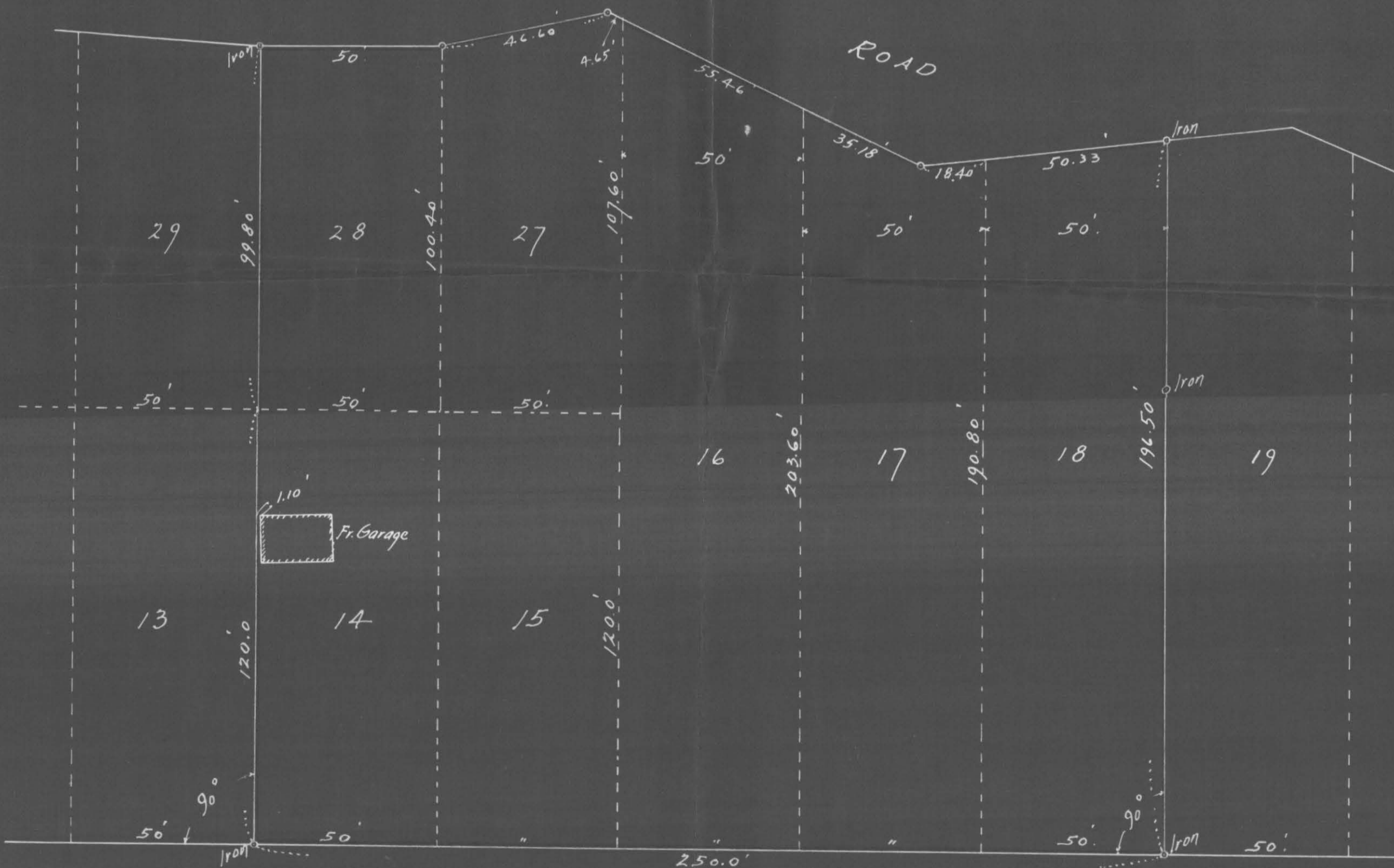
PLAT OF SURVEY OF LOTS 14-15-16-17-18-27 & 28 IN BLOCK 6  
BURLINGTON HEIGHTS DIVISION N<sup>o</sup> 2  
RAMSEY CO. MINN.

Scale 30ft. per inch

Surveyed by me in Nov. 1944  
F. J. Armstrong Civil Engr.  
Dec. 2<sup>nd</sup> 1944

GLEN

ROAD



PLATTED

NEWPORT

AVE.

#  
4678