

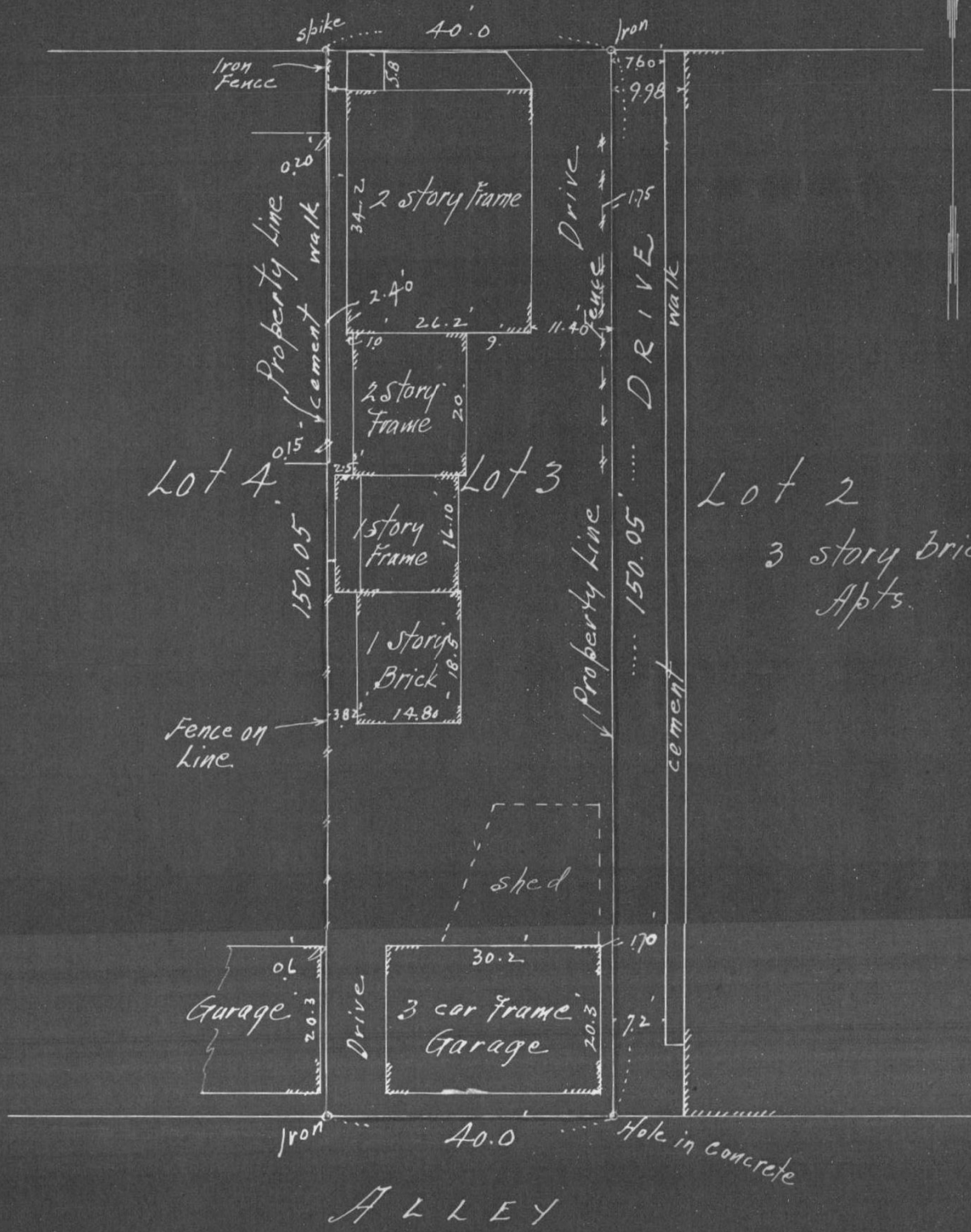


F. J. ARMSTRONG  
Civil Engineer and Surveyor  
ST. PAUL, MINN.



GRAND

AVE



Scale 20 ft. per inch

I HEREBY CERTIFY that on the 7<sup>th</sup> day of July A. D. 1944  
I made a survey of the following described property, to-wit: Lot 3 Block 17  
Summit Park Addition  
St. Paul, Minn.

Subscribed and sworn to before me this  
day of 19

Notary Public.

and the map hereon shown is a true and correct map of said survey and that the improvements thereon

