

4634

# ABSTRACT OF TITLE

MADE BY OFFICIAL OFFICE OF RAMSEY COUNTY

No. 1

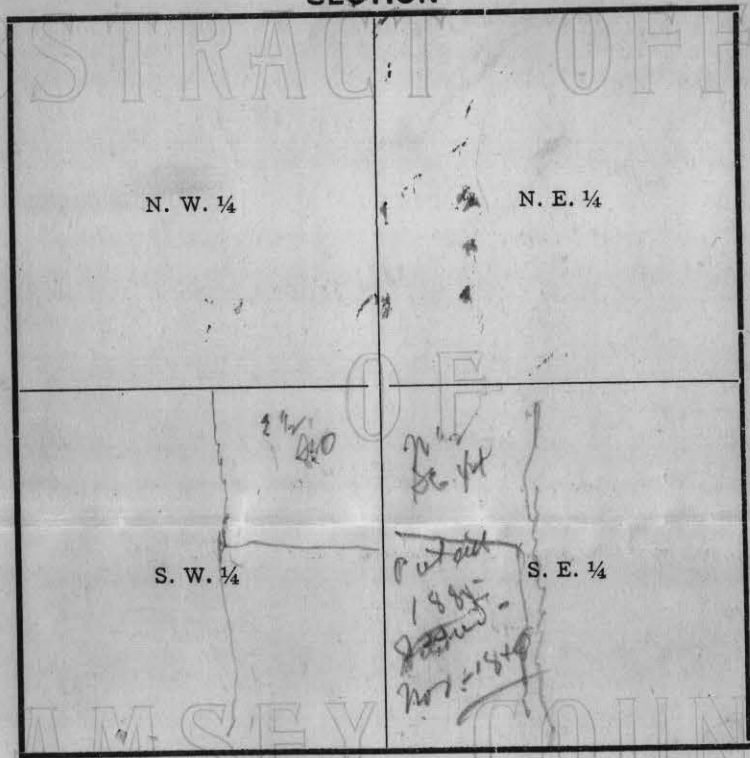
TO

Lot 23, Block 20, E. H. Hawke's Subdivision of Winslow's  
Addition to the Town of Saint Paul.

Premises described in caption are located in the SE $\frac{1}{4}$  of the SW $\frac{1}{4}$

of Section Number 1 Township Number 28 North of  
Range Number 23 West of the Fourth Principal Meridian.

### SECTION

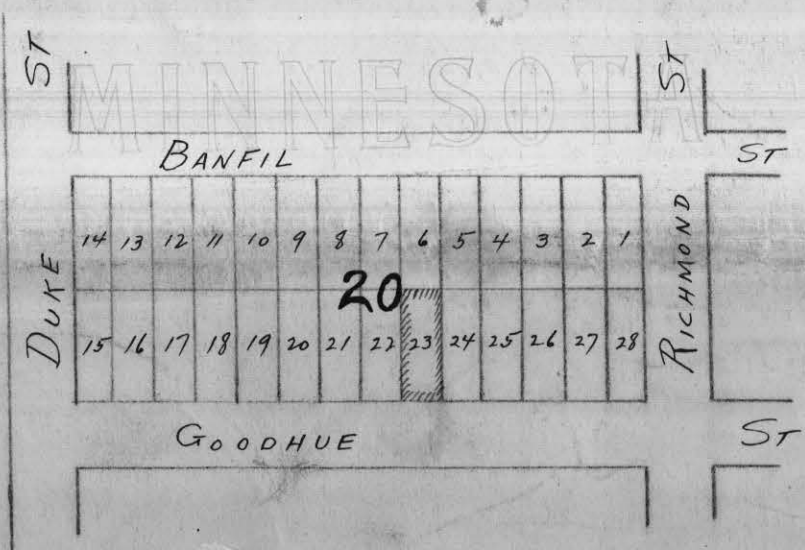


No. 2

Old Time Surveyor's Measure.

- 7  $\frac{92}{100}$  inches make 1 Link.
- 100 Links, or 66 feet, 1 Chain.
- 3 feet, 1 Yard.
- 5  $\frac{1}{2}$  yards or 16  $\frac{1}{2}$  feet, 1 Rod or Pole.
- 4 Rods, 1 Chain.
- 80 Chains (5280 feet) 1 Mile.

No. 3



# 4634