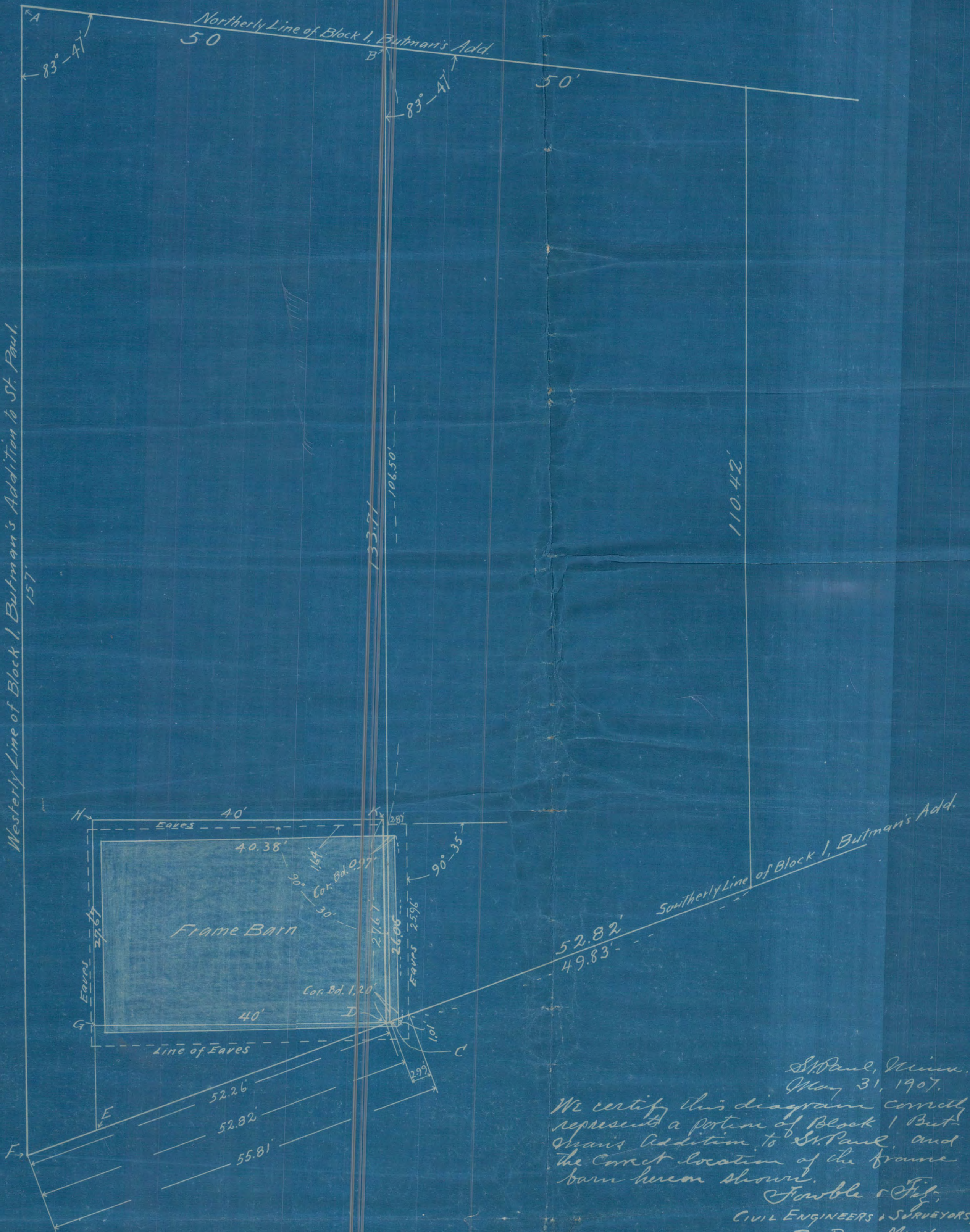


# SUMMIT AVE



Southerly Line of Block 1, Butman's Add.  
 52.82'  
 49.83'

St. Paul, Minn.  
 May 31, 1907.

We certify this diagram correctly represents a portion of Block 1 Butman's Addition to St. Paul, and the correct location of the frame barn hereon shown.

Fowble & Fitz,  
 CIVIL ENGINEERS & SURVEYORS,  
 ST. PAUL, MINN.

Deeds 104 Page 183 = ABCF  
 " 122 " 63 = DGHK  
 " 169 " 296 = DEG

# 463



W. Lizzie Butman's Addl.

SUMMIT

AVE

50.

50.

J. H. M. L. E.  
March 20<sup>th</sup> 07

# 463

Barn

