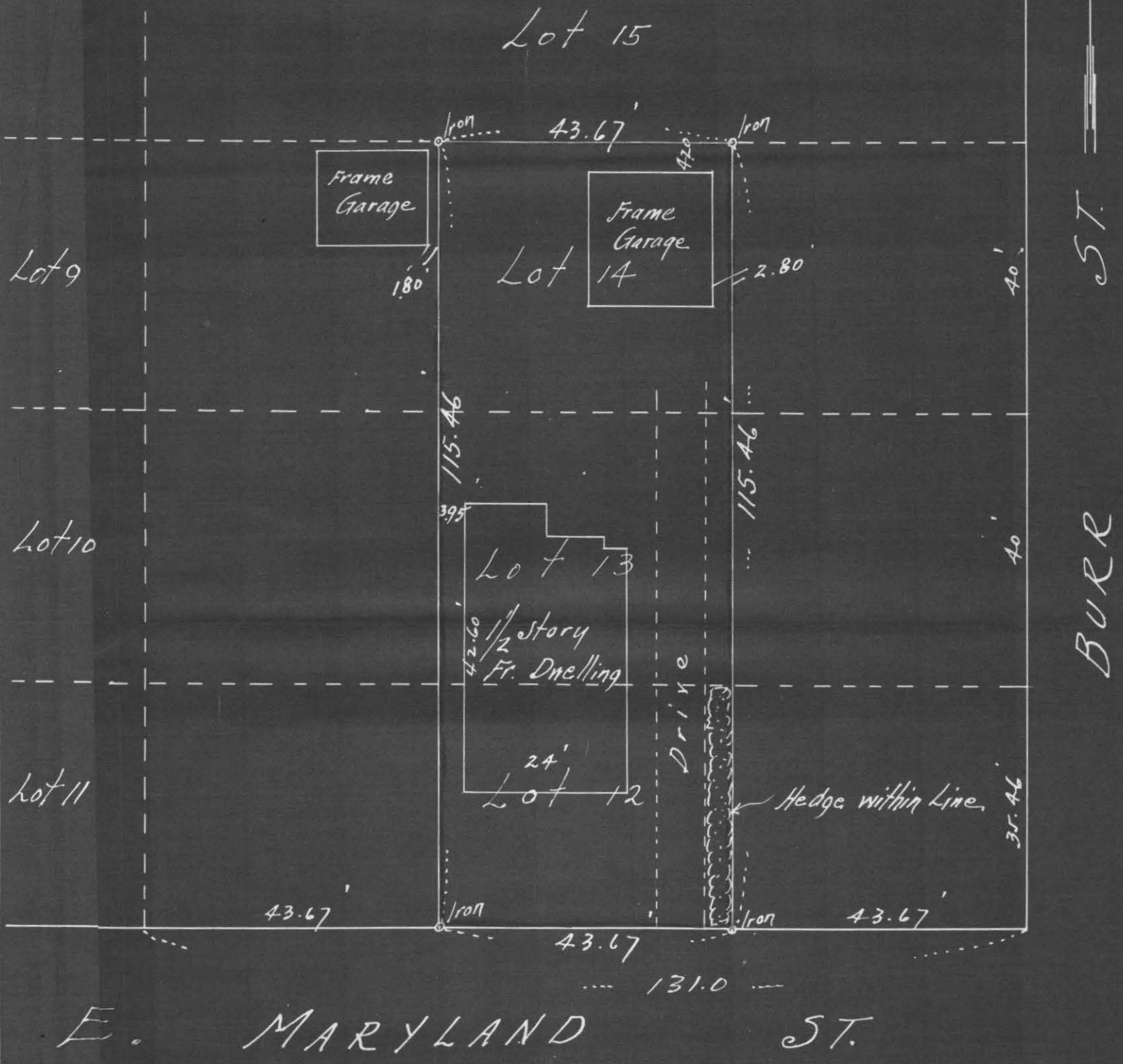


CERTIFICATE of SURVEY

F. J. ARMSTRONG
Civil Engineer and Surveyor
ST. PAUL, MINN.

#4542



Scale 20 ft. per inch

I HEREBY CERTIFY that on the 14th day of October A. D. 1942

I made a survey of the following described property, to-wit: The East 1/2 of the West 2/3 of Lots 12-13 & 14 Block 1 Clarke & Wilgus Addition to St. Paul, Minn.

and the map hereon shown is a true and correct map of said survey and that the improvements thereon indicated are correctly shown and there are no encroachments

F. J. Armstrong Civil Engineer.

Subscribed and sworn to before me this _____ day of _____ 19____

Notary Public.

My Commission Expires _____

4542