

CERTIFICATE OF SURVEY

DESCRIPTION LOT 12, BLOCK 2,
TINKER'S ADD.

SCALE 1 IN. = 20 FT.

Subscribed and sworn to before me this 14
day of QUONUT A. D. 1941

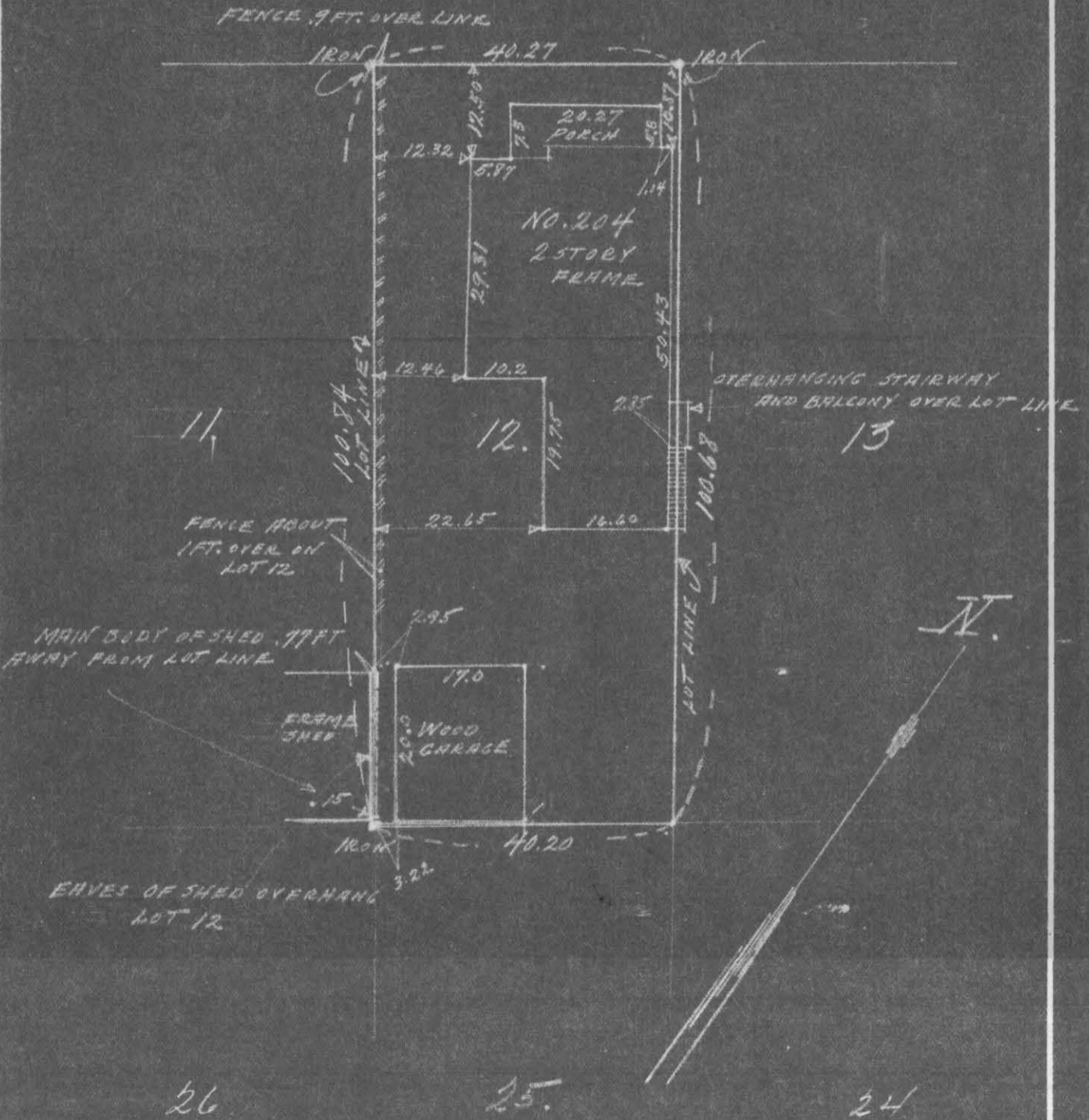
St. Paul, Minn., Aug. 13, 1941

I certify to having surveyed the above described property and that all distances and locations as hereon shown are correct.

Notary Public, Ramsey Co., Minn.
My Commission Expires Aug 15 1946

William E. Pedersen
Surveyor, 828 Globe Bldg.

EAST 14TH ST.



4386

ABSTRACT OF TITLE

MADE BY OFFICIAL OFFICE OF RAMSEY COUNTY

No. 1

TO

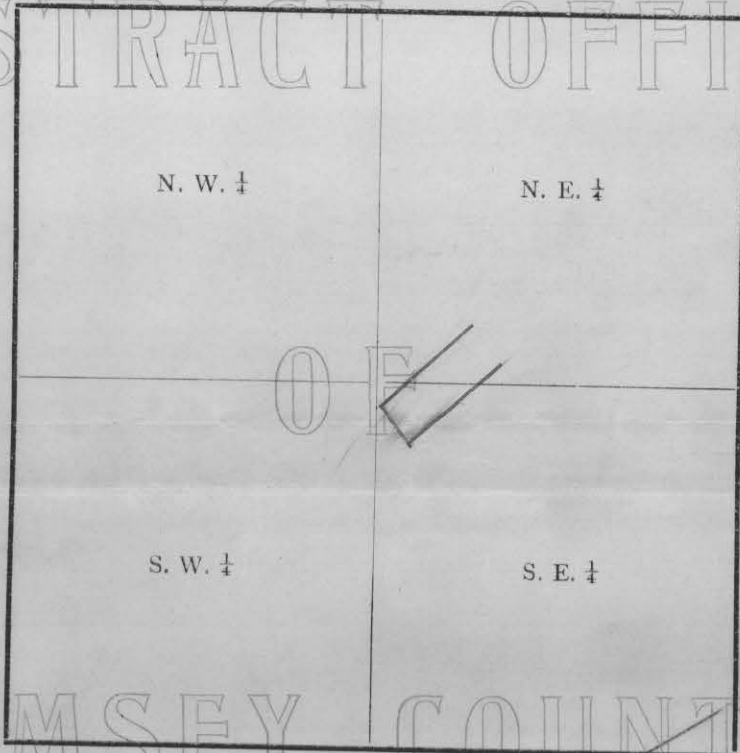
Lot 12, Block 2, Tinker's Addition to the City of St. Paul.

OFFICIAL

Premises described in caption are located in the SW 1/4 of NE 1/4 and NW 1/4 of SE 1/4

of Section Number 31 Township Number 29 North of
Range Number 22 West of the Fourth Principal Meridian.

SECTION



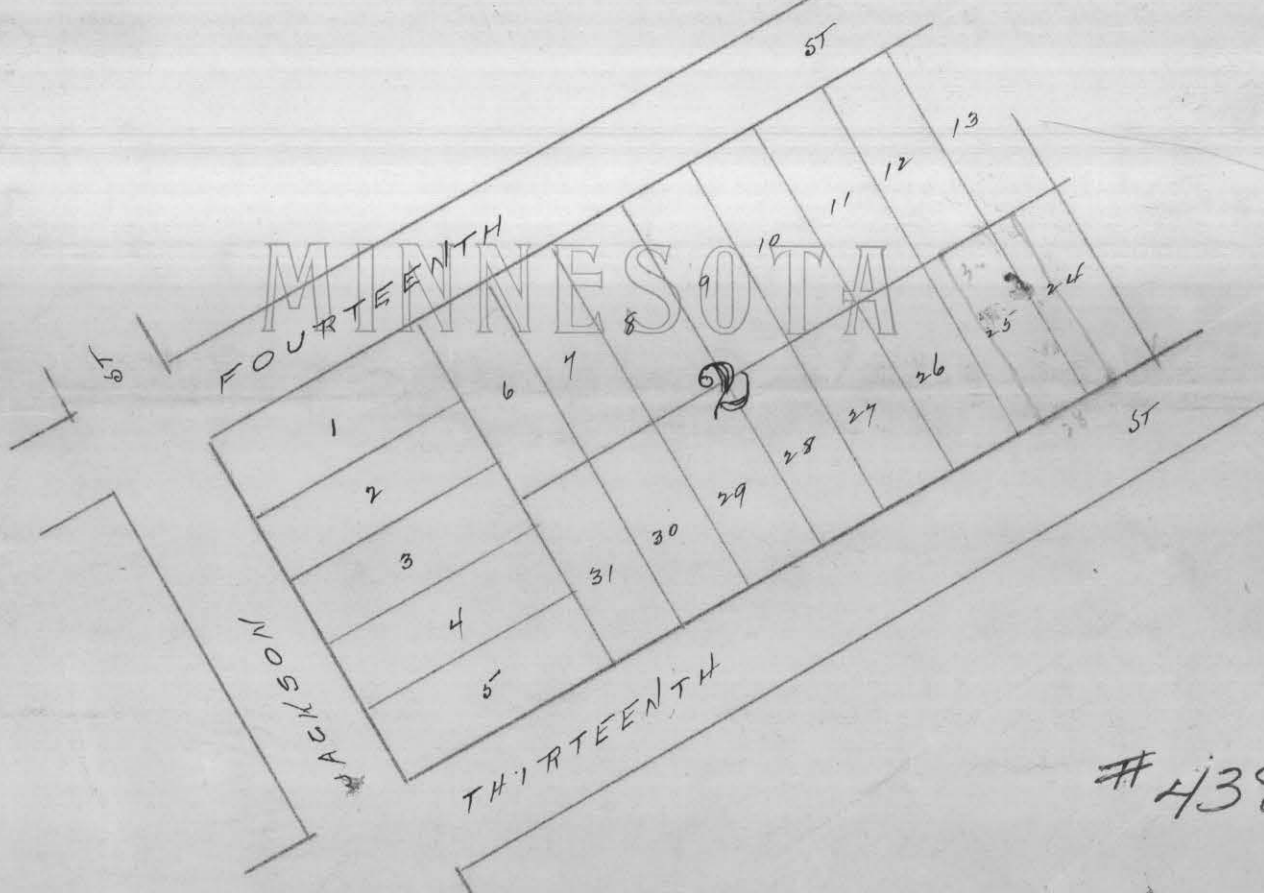
No. 2

Old Time Surveyors Measure

- 7⁹²/₁₀₀ inches make 1 Link.
- 100 Links, or 66 feet, 1 Chain.
- 3 feet, 1 Yard.
- 5¹/₂ yds. or 16¹/₂ ft., 1 Rod or Pole.
- 4 Rods, 1 Chain.
- 80 Chains (5280 feet) 1 Mile.

RAMSEY COUNTY

No. 3



4386