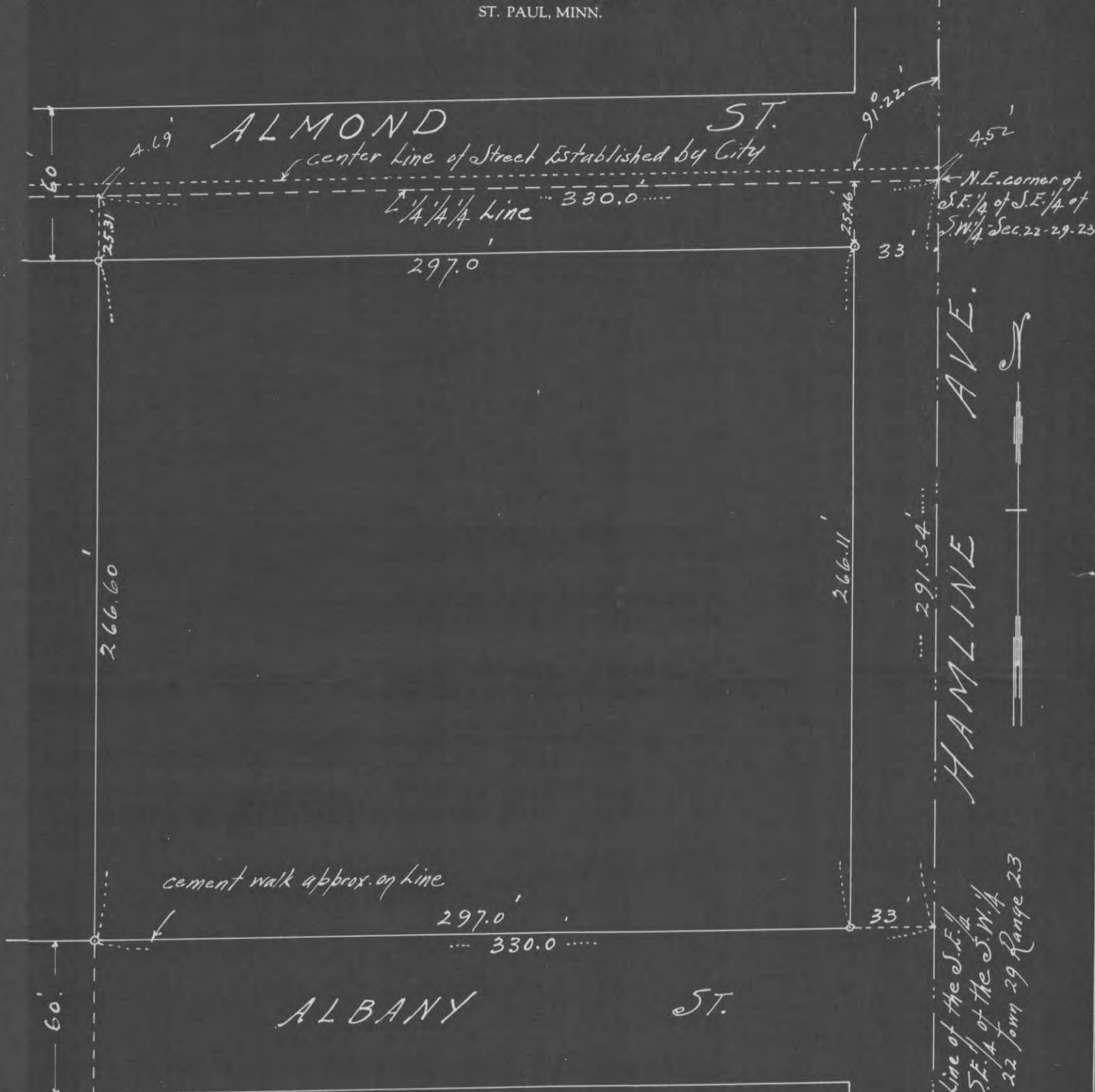


# CERTIFICATE of SURVEY

F. J. ARMSTRONG  
Civil Engineer and Surveyor  
ST. PAUL, MINN.



Scale 50 feet per inch

That part of the S.E. 1/4 of the S.E. 1/4 of the S.W. 1/4 of Section 22 Town 29 Range 23 described as follows: Commencing at the N.E. corner thereof; running thence South along the Easterly line thereof 291.54 feet; thence west 330 feet; thence North 291.91 feet; thence East 330 feet to place of beginning.

I HEREBY CERTIFY that on the 3<sup>rd</sup> day of May, A. D. 1940,

I made a survey of the following described property, to-wit: Part of the S.E. 1/4 of the S.E. 1/4 of the S.W. 1/4 of Section 22 Town 29 Range 23 in the City of St. Paul, Minnesota described above,

and the map hereon shown is a true and correct map of said survey and that the improvements thereon indicated are correctly shown.

Subscribed and sworn to before me this 17 day of May, 1940  
Notary Public.

My Commission Expires May 17 1943

*F. J. Armstrong*  
Civil Engineer.

#4183