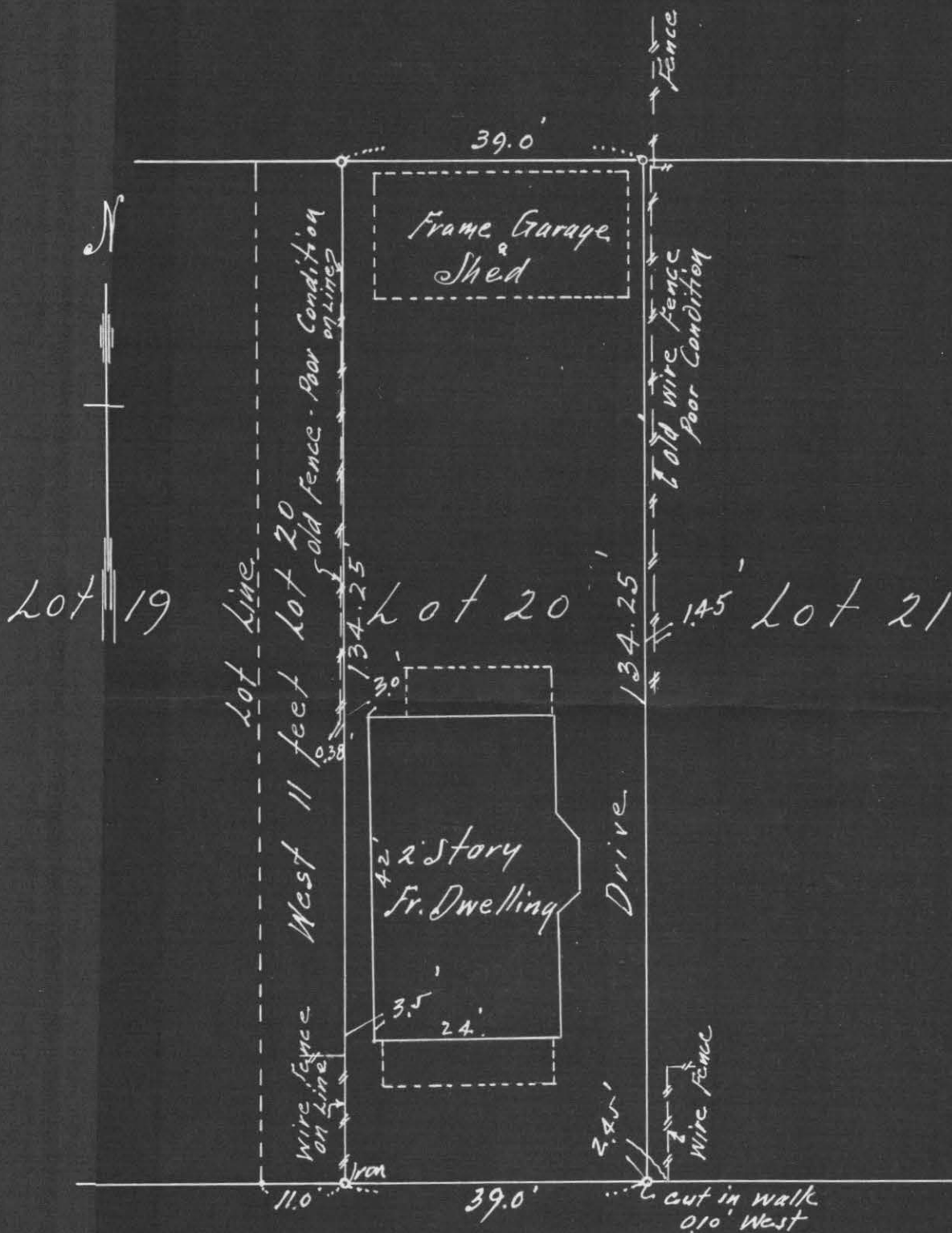


CERTIFICATE of SURVEY

F. J. ARMSTRONG
Civil Engineer and Surveyor
ST. PAUL, MINN.



Note: These lots are platted as 50 foot fronts and are resurveyed as such commencing from the west line of the addition

F. J. Armstrong

CHARLES ST.

Scale 20 feet per inch.

I HEREBY CERTIFY that on the 19th day of May, A. D. 1939.

I made a survey of the following described property, to-wit: Lot Twenty (20) except the west eleven (11) feet thereof, in Block two (2) of Magoffin & Breckenridge's Addition to St. Paul and the map hereon shown is a true and correct map of said survey and that the improvements thereon indicated are correctly shown.

Subscribed and sworn to before me this 23 day of May, 1939.

Notary Public.

My Commission Expires 30/40 1940

F. J. Armstrong
Civil Engineer.

4102